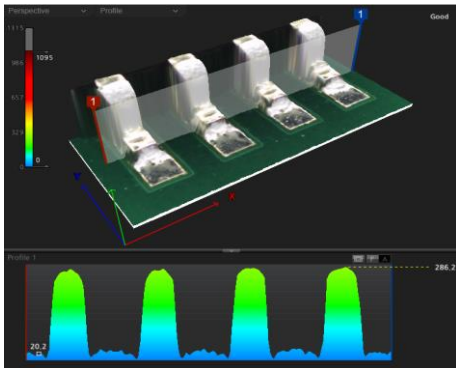


TECHNOLOGICALLY ADVANCED

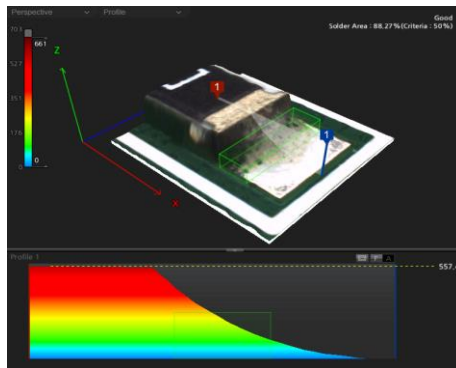
MV-6 OMNI 3D Series

MIRTEC

- High-Speed / High-Performance **3D AOI MACHINE**
- **FIFTEEN MEGA PIXEL** CoaXPress Camera Technology
- Advanced Eight Phase Color Lighting System
- Ten Micron / Pixel Precision Telecentric Compound Lens Design
- Integrated Ten Mega Pixel **SIDE-VIEWER®** Camera System
- Precision Closed Loop AC Servo Drive Motor System
- Extremely Simple Programming and Operation



3D Co-Planarity Inspection - Gull Wing Device



3D Solder Fillet Inspection Capability



- Exclusive **OMNI-VISION®** 3D Inspection Technology
- Superior Lifted Lead Detection for Gull Wing Devices
- **FULL 3D** Co-Planarity and Solder Fillet Inspection Capability
- Superior Defect Detection, Absolute Lowest False Call Rate



www.mirtec.com

MV-6 OMNI Series Features and Specifications

Max PCB Size Range	
MV-6 OMNI (10um Resolution)	50 mm x 50 mm to 480 mm x 460 mm (2.0" x 2.0" to 18.9" x 18.1")
MV-6 OMNI (15um Resolution)	50 mm x 50 mm to 460 mm x 460 mm (2.0" x 2.0" to 18.1" x 18.1")

Image Transfer Technology			
15 Mega Pixel	3,904 x 3,904 Pixel	CoaXpress	120 fps

OMNI-VISION® Inspection System		
3D Inspection Technology	Digital Multi-Frequency Quad Moiré Technology	
2D Inspection Technology	15 Mega Pixel CoaXPress Camera System	
Height Accuracy	±3 um	
Inspection Item	2D Inspection	Missing Component, Wrong Component, Mis-Alignment, Skewed Component, Polarity, Tombstone, Bridge, Flipped, Solder Ball, Etc
	3D Inspection	Height, Position, Lifted Package, Lifted Lead, Solder Fillet, Excessive Solder, Insufficient Solder, Open Solder, Etc

Vision System (FOV Size)				
15 Mega Pixel Camera	3,904 x 3,904 Pixels	Option 1	Pixel Resolution :15 um	58.56 mm x 58.56 mm (2.31" x 2.31")
		Option 2	Pixel Resolution :10 um	39.04 mm x 39.04 mm (1.54" x 1.54")

2D Maximum Inspection Speed					
15 Mega Pixel Camera	CoaXpress @ 120 fps	Option 1	Pixel Resolution :15 um	0.32 sec / FOV	10,716 mm2/sec (16.6 in2/sec)
		Option 2	Pixel Resolution :10 um	0.30 sec / FOV	5,080 mm2/sec (7.87 in2/sec)

3D Maximum Inspection Speed					
15 Mega Pixel Camera	CoaXpress @ 120 fps	Option 1	Pixel Resolution :15 um	0.77 sec / FOV	4,454 mm2/sec (6.9 in2/sec)
		Option 2	Pixel Resolution :10 um	0.75 sec / FOV	2,032 mm2/sec (3.15 in2/sec)

System Specifications		
Lens Configuration	Precision Telecentric Compound Lens Design	
Lighting System	Eight Phase Color Lighting	
SIDE-VIEWER® Camera System	Quantity Four - 10 Mega Pixel (3,664 x 2,736) Color Side Angle Cameras	
PCB Top Side Clearance	45 mm	
PCB Bottom Side Clearance	50.8mm (2.0") from bottom of PCB surface	
Maximum PCB Warpage	±3 mm	
Barcode System (Option)	1D or 2D Barcode Reader	
Built-in SPC	Statistical Process Control Software (Local)	
Built-in Repair	Repair Plus Software (Local)	
OLTT (Option)	Off-Line Teach Tool Software	
Minimum Component Inspection	0402 Chip (mm) / 01005 Chip (in) / 0.3 Pitch (mm)	
Robot Positioning System	X/Y Axis	Precision Closed Loop AC Servo Drive Motor System
	Resolution	1 um
	Repeatability	±10 um
Power Requirements	Single Phase 200~240V 50~60Hz; 1.1 KW	
Air Requirements	5 Kgf/cm2 (0.5 Mpa); (71 PSI)	

Machine Dimensions and Weight		
MV-6 OMNI	1,080 mm W x 1,470 mm D x 1,500 mm H (42.5" x 57.87" x 59.1")	950 kg (2,094 lbs.)

