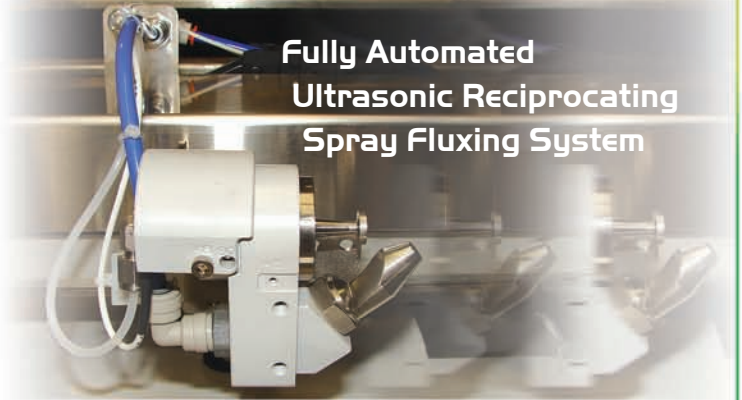
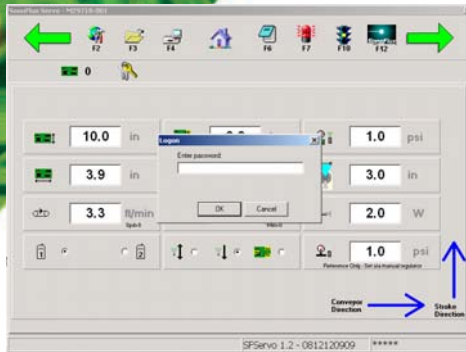
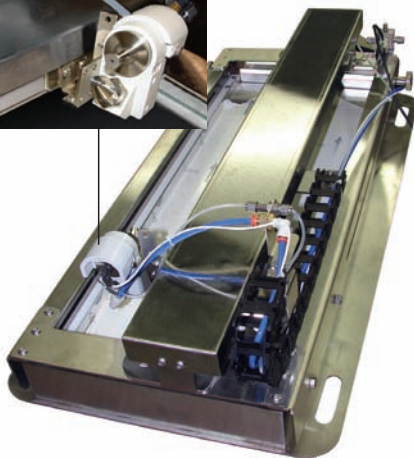
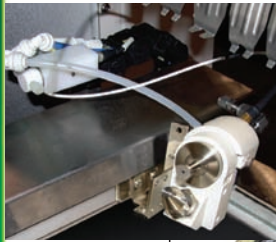


## Fully Automated Ultrasonic Reciprocating Spray Fluxing System



The SonoFlux Servo is a fully automated ultrasonic spray fluxing system designed on a high accuracy reciprocating platform. The ultrasonic atomization module uses a high Impact flux transfer system for maximizing top-side fills.

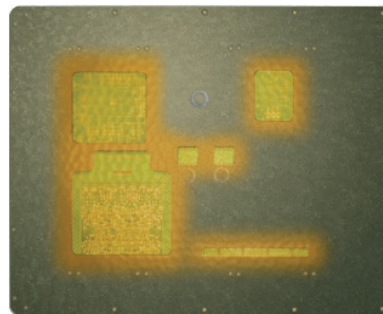
All process parameters are controlled with a user friendly Windows®-based interface. SonoFlux Servo is compatible with all flux types, including those used in lead-free manufacturing processes.



### The SonoFlux Servo system has many integrated features:

- 500,000 recipe storage
- Single or dual mode fluxing
- Easy integration and operation with all wave solder machines
- Non-clogging ultrasonic atomizing nozzle
- High precision flux delivery pump
- Conveyor speed sensing option
- Low maintenance design reciprocator
- Uniform coverage
- Reduction in flux consumption up to 80%
- Programmable selective fluxing capability
- Dual flux option

SonoFlux Servo is designed for complete flexibility - making it ideal for contract manufacturers making frequent product changeovers.

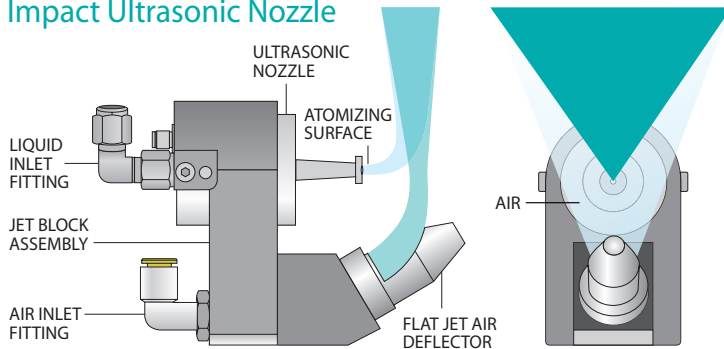


Selective area fluxing example



Standalone systems available

## Impact Ultrasonic Nozzle



The SonoFlux Servo system can either be installed internally in your wave solder machine or is available as a stand-alone unit.

The system is equipped with a high Impact flux transfer system to help with PCBs that have difficulty with top-side fill, such as those with thick back planes, tight lead-to-hole ratios, or contaminated components.

**INDUSTRY PROVEN** - Sono-Tek spray fluxing systems with a non-clogging ultrasonic nozzle and spray dispensing mechanism have been proven in thousands of industrial PCB fluxing applications worldwide.

**FLUX APPLICATION** - Flux is supplied from a closed reservoir by a positive displacement gear pump. The unpressurized flux reservoir includes a level sensor to alert the operator to a low level flux condition. The flux is atomized into a fine mist at the tip of the non-clogging, large-orifice ultrasonic nozzle which is reciprocated below the PCB, directing flux upward.

**FLEXIBILITY** - SonoFlux Servo can store up to 500,000 recipes, can be run in single or dual mode, and has a conveyor speed sensing option, making it ideal for high mix contract manufacturing.

**FASTEST PAYBACK** - In many installations, Sono-Tek systems have a reduced flux consumption by up to 80% as well as reducing solder defects by a similar percentage. Compared to foam fluxing, additional savings are achieved by the elimination of thinner and titration checks, as well as reduced waste disposal costs. Sono-Tek systems have also been shown to reduce flux consumption by up to 50% when compared to conventional spray fluxers.

**SERVICE AND SUPPORT** - Sono-tek Corporation prides itself on offering technical support second to none. North American-based service personnel and international distributors with factory-trained technicians provide this high standard of service throughout the world.

## SONOFLUX SERVO SYSTEM SPECIFICATIONS

### General Specifications

Fluxer Type	Fully automated reciprocating ultrasonic nozzle with high Impact flux transfer system
Construction	Stainless steel, titanium, Teflon®, polypropylene, Delrin®, Ertalyte®, Ryton®, EVA (flux wetted materials)
Storage Capability	500,000 recipes
User Interface	Notebook / PC-based
Flux Types	RMA, RA, Alcohol-based low solids, OA, VOC-free
PCB Width Range	2-18 inches (50-457 mm) / 2-24 inches (50-610 mm) optional
Flux Deposition Range	300-2500 µg/in <sup>2</sup> (for typical no-clean fluxes)
Programmable selective area fluxing	
Deposition Uniformity	±10%
Deposition Repeatability	±5%
Options	Conveyor Speed Sensing Dual Flux Configuration

Teflon®, Kalrez® and Delrin® are registered trademarks of E.I. DuPont de Nemours & Company  
Specifications may change without notice

Reciprocator speed	0 - 600 mm/sec
Conveyor Speed Range	0 - 250 cm/min (0 - 8.2 ft/min)
Reciprocator Dimensions	
18" (46 cm) configuration	33" (84 cm) x 16" (41 cm)
24" (61 cm) configuration	41" (104 cm) x 16" (41 cm)
Standalone Dimensions	76 cm W x 155 cm D x 122 cm H (30"W x 61"D x 48"H)

### Service Requirements

Line Power	110/120 VAC, 50/60 Hz or 220/240 VAC, 50/60 Hz Single phase, 900 VA max
Compressed Air	Clean, dry and oil-free
Supply Pressure	50 - 100 psi
Capacity	6 cfm
Exhaust	300 cfm minimum, 600 cfm recommended

Sono-Tek is one of the originators of spray fluxing technology. As the needs of the industry have changed, we have continued our commitment to leadership through state-of-the-art design and unsurpassed customer service.

**SONO•TEK Corporation**  
industry's leader in spray fluxing

Corporate Headquarters:  
2012 Rte. 9W, Milton, NY 12547  
Phone: 845-795-2020  
Fax: 845-795-2720

E-mail: info@sono-tek.com  
Web: www.sprayfluxing.com

Printed in USA

©2010 Sono-Tek Corporation. All rights reserved  
SFSERVO10R6

**ISO CERTIFIED**