

VALUTEK

INNOVATIVE SOLUTIONS FOR CRITICAL ENVIRONMENTS

「 CATALOG 」





Valutek – keeping it clean since 1988

Valutek has been servicing the cleanroom and controlled environment needs for thousands of customers in the pharmaceutical, electronic, and biomedical industries since 1988. Our one-source shopping model eliminates the need to coordinate multiple manufacturers, invoices, and contacts – one call does it all. We offer our customers best-in-class products and superior customer service. We don't just meet your demands – we consistently beat them, and have fostered a culture of continuous improvement. Valutek has built our reputation on quality, performance, dedication, and knowledge, providing our customers with a trusted business partner you can count on for years to come.

The convenience and simplicity of one-source shopping

Valutek understands that you have less time and more responsibilities than ever before. Supplying your cleanroom and critical environments has to be fast and easy. That's why we've built our company around your needs with 24/7 web-based ordering and online tracking/confirmation. When you have questions, your answers are only one click, email, or phone call away with 24/5 telephone support, online test data, and online product specifications.

Knowledgeable, consistent industry leadership

Since 1988, we have been committed to sharing and enhancing knowledge in the contamination control arena. We support the Global Society for Contamination Control (www.GSFCC.org), an independent organization focused on advancing contamination control through knowledge exchange and collaboration. In addition, our global operations extend from Mexico to Malaysia, providing information, leadership, and quality employment opportunities to hundreds around the world.

CLEANROOM CLASSIFICATIONS

ISO 14644-1	FED STD 209E	
ISO CLASS	ENGLISH	METRIC
1		
2		
3	1	M1.5
4	10	M2.5
5	100	M3.5
6	1,000	M4.5
7	10,000	M5.5
8	100,000	M6.6
9		

Proven technology leader focused on quality and performance

Before our products meet your own stringent requirements, they need to meet ours. We are the only manufacturer to provide ongoing independent testing, performed at Arizona State University Polytechnic's Microelectronics Center. Our close attention to quality control and commitment to continuous improvement ensures that you will always receive the highest quality products.

Agile, trusted partner dedicated to value innovation

We are your trusted partner, focused on helping you succeed. Along with our commitment to one-source convenience, Valutek's service commitment permeates all aspects of our organization, and is dedicated to only one mission: serving your critical environment needs. Our in-house customer service team of knowledgeable, friendly professionals responds to your requests quickly, from order tracking to technical product questions to credit terms.

ALL CLEANROOM NEEDS ARE NOT CREATED EQUAL.

Valutek has three different product lines perfectly suited for your cleanroom requirements

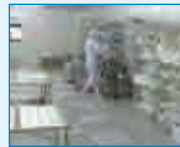


Environment

Where do you fit?



ISO 3-4 (Class 1-10)



ISO 5-6 (Class 100-1,000)



ISO 7+ (Class 10,000+)

Testing and Test Methodology

Reliable Industry Standards

Independent

ASTM, IEST, ESD

Internal Adherence To Standards

- ✓ **CLEANLINESS**
- ✓ **PHYSICAL DIMENSIONS**
- ✓ **PROPERTIES**

Independent

ASTM, IEST, ESD

Internal Adherence To Standards

- ✓ **PHYSICAL DIMENSIONS**
- ✓ **PROPERTIES**

Internal Adherence To Standards

- ✓ **PHYSICAL DIMENSIONS**
- ✓ **PROPERTIES**

Test Data

Verifying your quality



Available in every case



24/7 availability at Valutek.com



Available upon request

Material Traceability

Know what your product is made from



Raw material spec available



Traceable by lot



Traceable by lot



Traceable by lot

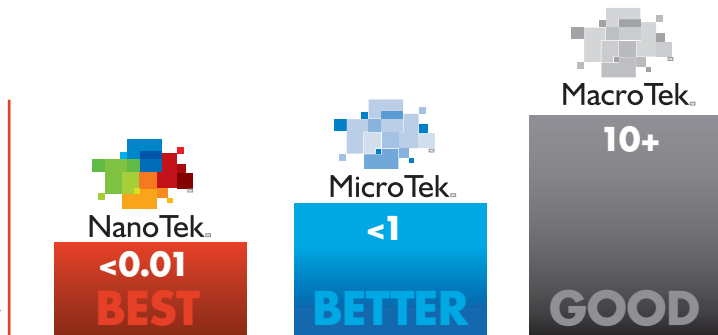
Quality Assurance

Guaranteed to exacting tolerances

Number of particles & extractables per cubic liter of air (x000)

High

Low





The proper product for the perfect task.

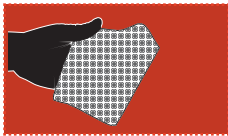
VALUTEK NOMENCLATURE

Ever wonder how we come up with our part numbers? Here we have decoded our part numbers for you.

Each part number is made up of a description of what you are purchasing, for example: VTGNPFB95-LG

Nomenclature Key							
VT	G	N	PF	B	95	-	LG
Valutek	Glove	Nitrile	Powder-free	Bagged	9 ½ inch	In	Large

TABLE OF CONTENTS



WIPERS: Nonwoven ▪ Knit ▪ Pre-Saturated ▪ Stencil Rolls



APPAREL: Headwear ▪ Facewear* ▪ Garments ▪ Footwear



GLOVES: Vinyl ▪ Latex ▪ Nitrile*



GLOVE LINERS: Nylon



ADHESIVE MATS: Mat ▪ Mat Frame



CLEANING & MAINTENANCE: Mops ▪ Tacky Rollers ▪ Spill Pillows



DOCUMENTATION: Notebooks ▪ Notepads ▪ Copy paper ▪ Continuous paper



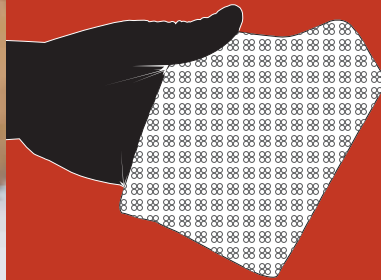
ESD: Finger Cots ▪ Gloves ▪ Grounders ▪ Wipers

INDEX

INDEX: By product category

WIPERS

「 ELIMINATE CONTAMINATION SAFELY 」



NON-WOVEN
KNIT
STERILE
PRE-SATURATED
STENCIL ROLLS

Wipers are typically used to remove contamination from all surfaces of critical environments, and are also used for wiping and cleaning products. They are designed to effectively pick up wet and dry contaminants, and to hold the contaminants for proper disposal.

Wiper Attributes

■ Non-woven

Non-woven wipers are made from clean, durable synthetic fibers, and their substrate is highly absorbent. They can be used either for cleaning, as they are chemically resistant to most cleaning agents, or for general wiping purposes. They have a high particle count, making them less suitable for ultra-clean environments.

■ Knit

One-ply knit wipers are less absorbent in comparison to non-wovens due to the physical characteristics of the monofilament textile. They are low in particulates and extractables, high in durability and strength, and are recommended for removal of dry particulates and contaminants.

Two-ply knits are also low in particulates and extractables, and are more absorbent than standard knit because of the quilted texture's ability to retain liquids. These are the "gold standard" for wipers and are perfectly suited for ultra-clean environments.

■ Sterile

Valutek sterile wipers are ideal for cleaning in aseptic cleanrooms, where maintaining sterility is of optimal importance to your application. All sterile wipers are validated sterile thru Cobalt 60 gamma irradiation to a Sterility Assurance Level of 10^{-6} and includes a Certificate of Sterility based on its ultra-low bioburden levels.

■ Pre-Saturated

Pre-saturation enhances the wiper's absorbent capacity and effectiveness. ValuSat pre-saturated wipers offer consistent performance for your cleanroom operations by reducing airborne contamination from solvent bottle dispensers, chemical storage, and spills. Each wiper dispenser exceeds standard industry quality, preventing solvent evaporation.

Along with our wide variety of stock pre-blended chemistries, we offer custom solvent blends, dispensers, and wiper substrates to meet your unique needs.

Choosing Your Wipers

We've made it easy to pick the right wipers for your cleanroom. Just look for these symbols next to each wiper type:



MacroTek.

Suitable for use in ISO 7+ (Class 10,000+) environments or higher



MicroTek.

Suitable for use in ISO 5-6 (Class 100-1,000) environments



NanoTek.

Suitable for use in ISO 3-4 (Class 1-10) environments

The three attributes to consider when choosing your wiper needs:

Absorbency

The rate and amount of liquid that a wiper can hold, usually measured in milliliters (ml). It's important to determine the proper rate and amount of absorbency for your specific environment.

Extractables

The amount of elements extracted from the wiper in a wash test, generally measured in Parts Per Million (PPM) or Parts Per Billion (PPB).

Particles

The number of particulates that are released by the material during testing. Polyester usually has the lowest particle rate, followed by nylon, poly-cellulose blend, and cotton, which has the highest rate.

Wiper Selection Chart

	GOOD <input type="checkbox"/>	BETTER <input type="checkbox"/>	BEST <input type="checkbox"/>			
	NON-WOVEN	TREATED NON-WOVEN	KNIT	2-PLY KNIT	PRE-SATURATED NON-WOVEN	PRE-SATURATED KNIT
ABSORBENCY	<input checked="" type="checkbox"/>	<input checked="" type="checkbox"/>	<input type="checkbox"/>	<input checked="" type="checkbox"/>	<input checked="" type="checkbox"/>	<input type="checkbox"/>
EXTRACTABLES	<input type="checkbox"/>	<input type="checkbox"/>	<input checked="" type="checkbox"/>	<input checked="" type="checkbox"/>	<input type="checkbox"/>	<input checked="" type="checkbox"/>
PARTICLES	<input type="checkbox"/>	<input type="checkbox"/>	<input checked="" type="checkbox"/>	<input checked="" type="checkbox"/>	<input type="checkbox"/>	<input checked="" type="checkbox"/>



Quality Checked

You can be assured our manufacturing process creates wipers that match your required specifications. Yarn material is hand-chosen and independently tested for quality. We use a multi-step system to inspect our edge treatments, and we use industry-proven laundering techniques to minimize extractables and particles. What does this mean for you? Great quality with even better satisfaction.



The Green Zone

Looking to reduce landfill waste? Consider using 2-ply wipers because they're stronger and will last longer than singly ply.

NONWOVEN



RAYON WIPER

- Durable and soft
- No binders, starches, or thermal bonding techniques
- Ideal for scratch sensitive surfaces

Characteristics:

- White, non-aperture rayon
- Low-linting
- Quarter-folded
- Chemically pure



Part Number	Size	Packaging	Total/Case
VTRRA-1213	12 x 13	50 ea/bag, 20 bag/cs	1000/case
VTRRA-2030	20 x 30	1000 ea/bag, 1 bags/cs	1000/case

NONWOVEN



SONTARA™ INDUSTRIAL NONWOVEN WIPER

- Strong, clean, and absorbent
- No binders, starches, or thermal bonding techniques
- Excellent general purpose wiper for non critical applications

Characteristics:

- Blue hydro-entangled, nonwoven 55% cellulose/45% polyester
- Low-linting
- Quarter-folded
- Creped finish for high dirt loading capacity
- Heavy weight for maximum sorbent capacity
- Chemically pure



Part Number	Size	Packaging	Total/Case
VTISNTRBL-1213	12x13	50 ea/bag, 20 bag/cs	1000/case
VTISNTRBL-1213F	12x13	Static shield bag 100 ea/bag, 10 bags/cs	1000/case

NONWOVEN



SPUNLACE NONWOVEN WIPER

- Strong, clean, and absorbent
- No binders, starches, or thermal bonding techniques
- Ideal for electronics applications and for general use in pharmaceutical and semiconductor industries
- Manufactured and packaged in a controlled environment

Characteristics:

- White hydro-entangled, nonwoven 55% cellulose/45% polyester
- Lint-free
- Chemically pure
- Electrostatic dissipative with low ionic extractables



Part Number	Size	Packaging	Total/Case
VTSNTR-44	4x4	1200 ea/bag, 12 bag/cs	14400/case
VTSNTR-99	9x9	300 ea/bag, 12 bag/cs	3600/case
VTSNTR-1212	12x12	150 ea/bag, 10 bag/cs	1500/case
VTSNTR-1818	18x18	75 ea/bag, 10 bag/cs	750/case

SPUNLACE NONWOVEN ROLL

- Strong, clean, and absorbent
- No binders, starches, or thermal bonding techniques
- Ideal for electronics applications and for general use in pharmaceutical and semiconductor industries
- Packaged in a convenient roll for custom cutting
- Manufactured and packaged in a controlled environment

Characteristics:

- White hydro-entangled, nonwoven 55% cellulose/45% polyester
- Lint-free
- Chemically pure
- Electrostatic dissipative with low ionic extractables



NONWOVEN

Part Number	Size	Packaging	Total/Case
VTSNTRR-351500	35" x 1500'	1 ea/bag, 1 bag/cs	1/case



SPUNLACE NONWOVEN STENCIL WIPER

- Designed specifically for cleaning SMT screen printing equipment and adaptable to virtually all applications and equipment brands, such as MPM, Dek and Ekra screen printers, both vacuum and non-vacuum.
- Quality wiping fabric absorbs solder paste and other contaminants, while remaining sufficiently porous for the vacuum unit to function.
- Wiping media (60G/M2) is highly absorbent and resistant to solvents while maintaining extremely low lint levels.
- No binders, starches, or thermal bonding techniques
- Custom sizes available upon request, multiple configurations to support different equipment needs such as cardboard or plastic notched cores

Characteristics:

- White hydro-entangled, nonwoven 55% cellulose/45% polyester
- Non-linting
- Chemically pure



STENCIL ROLL

Part Number	Core Length	Core ID	Roll Length	Packaging	Total / Case
VTSNTRR9-7555	9"	.75"	55'	1 ea/bag 1 bag/cs	1/case
VTSNTRR10-7539	10"	.75"	39'	1 ea/bag 1 bag/cs	1/case
VTSNTRR12-7539	12"	.75"	39'	1 ea/bag 1 bag/cs	1/case
VTSNTRR12-533	12"	.50"	33'	1 ea/bag 1 bag/cs	1/case
VTSNTRR14-7533	14"	.75"	39'	1 ea/bag 1 bag/cs	1/case
VTSNTRR16-533	16"	.50"	33'	1 ea/bag 1 bag/cs	1/case
VTSNTRR18-7539	18"	.75"	39'	1 ea/bag 1 bag/cs	1/case
VTSNTRR18-7555	18"	.75"	55'	1 ea/bag 1 bag/cs	1/case
VTSNTRR20-533	20"	.50"	33'	1 ea/bag 1 bag/cs	1/case
VTSNTRR21-7539	21"	.75"	39'	1 ea/bag 1 bag/cs	1/case
VTSNTRR22-7539	22"	.75"	39'	1 ea/bag 1 bag/cs	1/case
VTSNTRR22-7555	22"	.75"	55'	1 ea/bag 1 bag/cs	1/case
VTSNTRR24-533	24"	.50"	33'	1 ea/bag 1 bag/cs	1/case
VTSNTRR24-7555	24"	.75"	55'	1 ea/bag 1 bag/cs	1/case



NONWOVEN



COATED SPUNLACE NONWOVEN WIPER

- Strong, clean, and absorbent
- No binders, starches, or thermal bonding techniques
- Manufactured and packaged in a controlled environment
- Ideal for general use in pharmaceutical and semiconductor industries
- Processed to reduce particulate levels in comparison to other nonwoven wipers

Characteristics:

- White hydro-entangled, nonwoven 55% cellulose/45% polyester
- Lint-free



Part Number	Size	Packaging	Total/Case
VTSNTRC-44	4x4	1200 ea/bag, 12 bag/cs	14400/case
VTSNTRC-99	9x9	300 ea/bag, 12 bag/cs	3600/case
VTSNTRC-1212	12x12	150 ea/bag, 10 bag/cs	1500/case
VTSNTRC-1818	18x18	75 ea/bag, 10 bag/cs	750/case

NONWOVEN



3-PLY POLYPROPYLENE WIPER

- Strong, clean, and highly absorbent
- Excellent wicking action for larger spills
- Economical alternative to polyester for semi-critical applications
- Manufactured and packaged in a controlled environment

Characteristics:

- White hydro-entangled, nonwoven 3-ply cellulose is thermally bonded between two outer layers of abrasion-resistant nonwoven polypropylene
- Low-linting
- Chemically pure
- Resistant to acids
- Electrostatic dissipative with low ionic extractables



Part Number	Size	Packaging	Total/Case
VT3PSNTR-89	4x4	100 ea/pack, 12 pack/cs	1200/case
VT3PSNTR-1212	9x9	100 ea/pack, 14 pack/cs	1400/case

KNIT



COTTON TWILL WIPER

- Durable and soft
- Tightly woven for strength and durability
- Ideal for cleaning, polishing, and burnishing magnetic disk media surfaces
- Excellent in high heat applications, and absorption of aqueous and organic solvent spills
- Manufactured and packaged in a controlled environment

Characteristics:

- Twill-patterned, 100% long-staple cotton
- Bias cut for a cleaner edge



Part Number	Size	Material	Packaging	Total/Case
VTTTC-44	4x4	Cotton	1200 ea/bag, 10 bag/cs	12000/caase
VTTTC-99	9x9	Cotton	150 ea/bag, 10 bag/cs	1500/case
VTTTC-1212	12x12	Cotton	75 ea/bag, 10 bag/cs	750/case

NYLON WIPER

- Durable and soft
- Ideal for scratch-sensitive surfaces
- Custom sizes available upon request

Characteristics:

- 100% textured nylon
- Lint-free
- Special stitch helps with abrasion resistance
- Laundered and packaged in a critical environment



KNIT

Part Number	Size	Packaging	Total/Case
VTNNW-99	9x9	150 ea/bag, 8 bag/cs	1200/case
VTNNW-1212	12x12	100 ea/bag, 10 bag/cs	1000/case
VTNNW-1418	14x18	50 ea/bag, 2 bag/cs	100/case

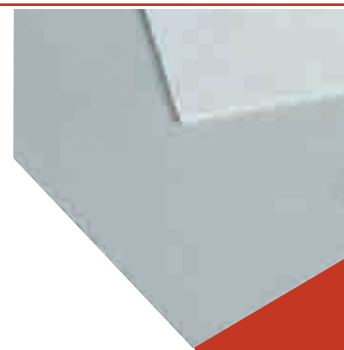


POLYESTER ECONOMIC WIPER

- Durable and soft
- Ideal for scratch-sensitive surfaces, equipment wipe-downs
- Custom sizes and economic bulk packaging available upon request
- Manufactured in a controlled environment

Characteristics:

- 100% continuous filament polyester
- Double-knit interlock
- No-run circular pattern
- Selvage edge
- Lint-free
- Basis weight: 132 g/m²



KNIT

Part Number	Size	Weight	Packaging	Total/Case
VTPNU-99	9x9	Standard Weight	150 ea/bag, 8 bag/cs	1200/case
VTPNUB-99	9x9	Standard Weight	300 ea/bulk packed bag, 4 bags/cs	1200/case
VTPNUB-1212	12x12	Standard Weight	75 ea/bulk packed bag, 10 bags/cs	750
VTPNULW-44	4x4	Light Weight	600 ea/bag, 8 bags/cs	4800/case
VTPNULW-99	9x9	Light Weight	150 ea/bag, 8 bags/cs	1200/case
VTPNULW-1212	12x12	Light Weight	100 ea/bag, 8 bags/cs	800/case



POLYESTER LAUNDERED WIPER, LIGHT WEIGHT

- Durable and soft
- Ideal for scratch-sensitive surfaces, equipment wipe-downs
- Laundered and packaged in a critical environment
- Custom sizes and economic bulk packaging available upon request

Characteristics:

- 100% continuous filament polyester
- Double-knit interlock
- No-run circular pattern
- Selvage edge
- Lint-free
- Basis Weight: 118 g/m²



KNIT

Part Number	Size	Weight	Packaging	Total/Case
VTPNWLW-66	6x6	Light Weight	150 ea/bag, 14 bag/cs	2100/case
VTPNWLW-99	9x9	Light Weight	150 ea/bag, 8 bag/cs	1200/case
VTPNWLW-1212	12x12	Light Weight	100 ea/bag, 10 bag/cs	1000/case
VTPNWLW-1520	15x20	Light Weight	100 ea/bag, 5 bag/cs	500/case
VTPNWLWB-99	9x9	Light Weight	300 ea/bulk packed bag, 4 bag/cs	1200/case
VTPNWLWB-1520	15x20	Light Weight	5 lbs/bulk packed bag, 4 bag/cs	20/case



KNIT



POLYESTER LAUNDERED HEAVY WEIGHT WIPER

- Durable and soft
- Heavyweight material for greater sorbency of liquids
- Ideal for scratch-sensitive surfaces, equipment wipe-downs
- Laundered and packaged in a critical environment
- Custom sizes and economic bulk packaging available upon request

Characteristics:

- 100% continuous filament polyester
- Double-knit interlock
- No-run circular pattern
- Selvage edge
- Lint-free
- Basis Weight: 155 g/m2



Part Number	Size	Weight	Packaging	Total/Case
VTPNHWW-1212	12x12	Heavy Weight	100 ea/bag, 8 bag/cs	800/case

KNIT



POLYESTER LAUNDERED WIPER, STANDARD WEIGHT

- Durable and soft
- Ideal for scratch-sensitive surfaces, equipment wipe-downs
- Laundered and packaged in a critical environment
- Custom sizes and economic bulk packaging available upon request

Characteristics:

- 100% continuous filament polyester
- Double-knit interlock
- No-run circular pattern
- Selvage edge
- Lint-free
- Basis Weight: 132 g/m2



Part Number	Size	Weight	Packaging	Total/Case
VTPNW-22	2x2	Standard Weight	3000 ea/bag, 12 bags/cs	36000/case
VTPNW-44	4x4	Standard Weight	600 ea/bag, 8 bags/cs	4800/case
VTPNW-99	9x9	Standard Weight	150 ea/bag 8 bags/cs	1200/case
VTPNW-1212	12x12	Standard Weight	75 ea/bag 10 bags/cs	750/case
VTPNW-2020	20x20	Standard Weight	100 ea/bag, 2 bags/cs	200/case
VTPNW-2144	21X44	Standard Weight	75 ea/bag, 3 bags/cs	225/case
VTPNW-50144	50x144	Standard Weight	4 ea/bag, 4 bags/cs	12/case

POLYESTER WIPER, LAUNDERED WITH LASER EDGE

- Durable and soft
- Laser sealed edge provides maximum protection against particulate contamination
- Ideal for critical wiping applications
- Custom sizes and economic bulk packaging available upon request

Characteristics:

- 100% continuous filament polyester
- Double-knit interlock
- No-run circular pattern
- Lint-free
- Basis Weight: 132 g/m²



KNIT

Part Number	Size	Weight	Packaging	Total/Case
VTPNWLS-44	4x4	Standard Weight	600 ea/bag, 8 bag/cs	4800/case
VTPNWLS-66	6x6	Standard Weight	600 ea/bag, 5 bag/cs	3000/case
VTPNWLS-99	9x9	Standard Weight	150 ea/bag, 8 bag/cs	1200/case
VTPNWLS-1212	12x12	Standard Weight	75 ea/bag, 10 bags/cs	750/case
VTPNWLS-1818	18x18	Standard Weight	40 ea/bag, 12 bags/cs	480/case
VTPNWLSB-99	9x9	Standard Weight	30 ea/bulk packed bag, 5 bags/master bag, 8 master bags/cs	1200/case
VTPNWLSB-1212	12x12	Standard Weight	30 ea/bulk packed bag, 4 bags/master bag, 10 master bags/cs	1200/case
VTPNWLSB-1620	16x20	Standard Weight	50 ea/bulk packed bag, 10 bag/cs	500/case
VTPNWLSB-1818	18x18	Standard Weight	50 ea/bulk packed bag, 2 bags/master bag, 5 master bags/cs	500/case
VTPNWLSB-2443	24 x 43	Standard Weight	25 ea/bulk packed bag, 6 bags/cs	150/case



2-PLY POLYESTER WIPER, OVERLOCKED EDGE

- Strong, clean, and absorbent
- 2-ply construction for 2-3x greater sorbency of liquids and particulates
- Overlocked edge provides superior durability and reusability
- Laundered and packaged in a critical environment
- Ideal for critical wiping applications where cleanliness and absorbency are important

Characteristics:

- 100% continuous filament polyester
- 2-Ply double-knit interlock
- No-run circular pattern
- Lint-free
- Basis Weight: 310 g/m²



KNIT

Part Number	Size	Weight	Packaging	Total/Case
VT2PNHWOW-1212	12x12	Heavy Weight	100 ea/bag, 5 bags/cs	500/case



KNIT



2-PLY POLYESTER WIPER WITH ULTRASONIC SEALED EDGE

- Strong, clean, and absorbent
- 2-ply construction for 2-3x greater sorbency of liquids and particulates
- Economical, improved alternative to laser-sealed
- Ultrasonic sealed edge provides maximum protection for scratch-sensitive surfaces
- Laundered and packaged in a critical environment
- Ideal for critical wiping applications where cleanliness and absorbency are important

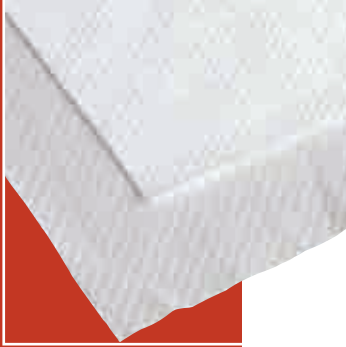
Characteristics:

- 100% continuous filament polyester
- 2-Ply double-knit interlock
- No-run circular pattern
- Lint-free
- Basis Weight: 260 g/m2



Part Number	Size	Weight	Packaging	Total/Case
VT2PNW-99	9x9	Standard Weight	100 ea/bag, 8 bag/cs	800/case
VT2PNW-1212	12x12	Standard Weight	100 ea/bag, 8 bag/cs	800/case
VT2PNW-1818	18x18	Standard Weight	20 ea/bag, 10 bag/cs	200/case
VT2PNW-2424	24X24	Standard Weight	10 ea/bag, 8 bag/cs	80/case

KNIT



2-PLY POLYESTER WIPER WITH LASER SEALED EDGE

- Strong, clean, and absorbent
- Laser sealed edge provides maximum protection against particulate contamination
- 2-ply construction for 2-3x greater sorbency of liquids
- Laundered and packaged in a critical environment
- Ideal for equipment wipe-downs and facilities maintenance

Characteristics:

- 100% continuous filament polyester
- 2-Ply double-knit interlock
- No-run circular pattern
- Lint-free
- Basis Weight: 220 g/m2



Part Number	Size	Weight	Packaging	Total/Case
VT2PNWLS-44	4x4	Light Weight	300 ea/bag, 12 bag/cs	3600/case
VT2PNWLS-99	9x9	Light Weight	150 ea/bag, 8 bag/cs	1200/case
VT2PNWLS-1212	12x12	Light Weight	75 ea/bag, 12 bag/cs	900/case
VT2PNWLS-3/43/4	3/4 x 3/4	Light Weight	5000 ea/bag, 12 bag/cs	60,000/case
VT2PNWLSB-22	2x2	Light Weight	1200 ea/bag, 12 bag/cs, bulk packed	14400/case
VT2PNWLSB-33	3x3	Light Weight	600 ea/bag, 12 bag/cs, bulk packed	7200/case
VT2PNWLSB-66	6x6	Light Weight	150 ea/bag, 12 bag/cs, bulk packed	1800/case
VT2PNWLSB-99	9x9	Light Weight	150 ea/bag, 8 bag/cs, bulk packed	1200/case

KNIT



POLYESTER WIPER, BORDER SEALED

- Strong, clean, and absorbent
- Pressure and heat provides a sealed border, resulting in maximum fiber retention
- Proprietary process enhances sorbency of liquids
- Laundered and packaged in a critical environment
- Ideal for critical wiping applications where cleanliness and absorbency are important

Characteristics:

- 100% continuous filament polyester
- No-run circular pattern
- Lint-free
- Electrostatic dissipative with low ionic extractables
- Basis Weight: 132 g/m2



Part Number	Size	Weight	Packaging	Total/Case
VTPNWPHS-99	9x9	Standard Weight	75 ea/inner bag, 150 ea/outer bag, 8 bags/case	1200/case
VTPNWPHS-1212	12x12	Standard Weight	50 ea/inner bag/100 ea/outer bag 10 bags/cs	1000/case

2-PLY POLYESTER WIPER, BORDER SEALED

- Strong, clean, and absorbent
- Pressure and heat provides a sealed border, resulting in superior fiber retention
- Proprietary process and 2-ply construction maximize sorbency of liquids
- Laundered and packaged in a critical environment
- Ideal for critical wiping applications where cleanliness and absorbency are important

Characteristics:

- 100% continuous filament polyester
- 2-Ply double-knit interlock
- No-run circular pattern
- Lint-free
- Basis Weight: 260 g/m²



KNIT



Part Number	Size	Weight	Packaging	Total/Case
VT2PNWPHS-99	9x9	Standard Weight	50pcs/inner bag, 100pcs/bag, 8 bag/case	800/case
VT2PNWPHS-1212	12x12	Standard Weight	50pcs/inner bag, 100pcs/bag, 4 bag/case	400/case



ESD POLYESTER WIPER, LAUNDERED AND SELVAGE EDGED

- Strong, clean, and absorbent
- Contains conductive carbon fiber designed to dissipate electrical charge
- Electrostatic Discharge Properties: surface resistivity 4.5x10⁷
- static decay time less than 1.3 seconds

Characteristics:

- 100% continuous filament polyester
- No-run circular pattern
- Lint-free
- Selvage edge
- Basis Weight: 132 g/m²



KNIT



Part Number	Size	Weight	Packaging	Total/Case
VTPNWESD-99	9x9	Standard Weight	150 Ea/Bag, 8 Bags/Case	1200/case



STERILE COATED SPUNLACE NONWOVEN WIPER

- Strong, clean, and absorbent
- No binders, starches, or thermal bonding techniques
- Extremely sorbent for liquid pick-up in a sterile environment
- Processed to reduce particulate levels in comparison to other nonwoven wipers
- Manufactured in a controlled environment

Characteristics:

- White hydro-entangled, nonwoven 55% cellulose/45% polyester
- Lint-free
- Validated sterile through Cobalt 60 processing



STERILE



Part Number	Size	Packaging	Total/Case
VTSNRCIR-1212	12x12	25/bag 6 bags/pack 8 packs/cs	1200/case



STERILE



STERILE POLYESTER LAUNDERED WIPER, ULTRASONIC EDGE

- Durable and soft
- Ultrasonic sealed edge provides maximum protection for scratch-sensitive surfaces
- Laundered and packaged in a critical environment
- Ideal for critical wiping applications in aseptic environments where sorbency is important

Characteristics:

- 100% continuous filament polyester
- Double-knit interlock
- No-run circular pattern
- Lint-free
- Validated sterile through Cobalt 60 processing
- Basis Weight: 132 g/m²



Part Number	Size	Packaging	Total/Case
VTPNWIR-99	9x9	20/bag 5 bags/pack 8 packs/cs	800/case
VTPNWIR-1212	12x12	20/bag 5 bags/pack 5 packs/cs	500/case

STERILE



STERILE 2-PLY POLYESTER WIPER, ULTRASONIC EDGE

- Strong, clean, and absorbent
- Pressure and heat provides a sealed border, resulting in superior fiber retention
- Proprietary process and 2-ply construction maximize sorbency of liquids
- Ideal for critical wiping applications in aseptic environments where sorbency is important

Characteristics:

- 100% continuous filament polyester
- 2-Ply double-knit interlock
- No-run circular pattern
- Lint-free
- Validated sterile through Cobalt 60 processing
- Basis Weight: 260 g/m²



Part Number	Size	Packaging	Total/Case
VT2PNWIR-1212	12x12	20/bag 5 bags/pk 5 pks/cs	500/case

STERILE



STERILE 2-PLY POLYESTER WIPER, BORDER SEALED

- Strong, clean, and absorbent
- Pressure and heat provides a sealed border, resulting in maximum fiber retention
- Proprietary process and 2-ply construction maximize sorbency of liquids
- Ideal for critical wiping applications in aseptic environments where sorbency is important

Characteristics:

- 100% continuous filament polyester
- 2-Ply double-knit interlock
- No-run circular pattern
- Lint-free
- Validated sterile through Cobalt 60 processing
- Basis Weight: 260 g/m²



Part Number	Size	Packaging	Total/Case
VT2PNWPHSIR-99	9x9	50pcs/inner bag, 100pcs/bag, 8 bag/cs	800/case
VT2PNWPHSIR-1212	12x12	50pcs/inner bag, 100pcs/bag, 4 bag/cs	400/case

VALUSAT™ PRE-SATURATED STERILE CRITICAL ENVIRONMENT WIPER

- Saturated in semiconductor grade solution, filtered to 0.2 µm
- Packaged in a convenient, resealable pouch designed to reduce solvent evaporation
- Ideal for critical wiping application in aseptic environments

Characteristics:

- 100% continuous filament polyester
- Solution of 70% isopropyl alcohol, 30% deionized 18 mega ohm water
- Validated sterile through Cobalt 60 processing



STERILE

Part Number	Size	Solution Mix	Packaging	Total/Case
VTPNWSI70IR-99F	9x9	70% IPA, 30% DI H2O (335 ml)	30/pouch 20 pouches/cs	600/case



VALUSAT™ PRE-SATURATED STERILE 2-PLY CRITICAL ENVIRONMENT WIPER

- Saturated in semiconductor grade solution, filtered to 0.2 µm
- Proprietary process and 2-ply construction maximize sorbency of liquids and particulates
- Packaged in a convenient, resealable pouch designed to reduce solvent evaporation
- Ideal for general use in pharmaceutical and semiconductor industries
- Ideal for critical wiping applications in aseptic environments where sorbency is important

Characteristics:

- 100% continuous filament polyester
- 2-Ply double-knit interlock
- Solution of 70% isopropyl alcohol, 30% deionized 18 mega ohm water
- Validated sterile through Cobalt 60 processing



STERILE

Part Number	Size	Solution Mix	Packaging	Total/Case
VT2PNWPHSIR70-99F	9x9	70% IPA, 30% DI H2O (335 ml)	30/pouch 20 pouches/cs	600/case
VT2PNWPHSIR70-1212F	12x12	70% IPA, 30% DI H2O (335 ml)	30/pouch 20 pouches/cs	600/case



Third-party testing helps ensure that Valutek products will perform as expected under the most stringent real-world conditions. Spec sheets and test results on Valutek products are available on the company website www.valutek.com.

PRE-SATURATED



VALUSAT™ PRE-SATURATED POLYESTER WIPER PAIL

- Saturated in semiconductor grade solution, filtered to 0.2 mp
- Hinge-lid pail enables easy bulk usage without solvent evaporation
- Laundered and packaged in a critical environment
- Ideal for critical wiping applications
- Ideal for general use in pharmaceutical and semiconductor industries
- Custom solvent blends available

Characteristics:

- 100% continuous filament polyester
- Solution of isopropyl alcohol and deionized 18 mega ohm water



Part Number	Size	Solution Mix	Wipe	Packaging	Total/Case
VTPNWSI05-99	9x9	5 % IPA, 95% DI H2O (1200 ml)	Laundered Polyester	150 wipes/pail 2 pails/case	300 wipes/case
VTPNWSI10-99	9x9	10% IPA, 90% DI H2O (1200 ml)	Laundered Polyester	150 wipes/pail 2 pails/case	300 wipes/case
VTPNWSI30-99	9x9	30% IPA, 70% DI H2O (1200 ml)	Laundered Polyester	150 wipes/pail 2 pails/case	300 wipes/case
VTPNWSI60-99	9x9	60% IPA, 40% DI H2O (1200 ml)	Laundered Polyester	150 wipes/pail 2 pails/case	300 wipes/case
VTPNWSI70-99	9x9	70% IPA, 30% DI H2O (1200 ml)	Laundered Polyester	150 wipes/pail 2 pails/case	300 wipes/case
VTPNWSI70-99D	9x9	70% IPA, 30% DI H2O (1000 ml)	Laundered Polyester	200 wipes/pail 2 pails/case	300 wipes/case
VTPNWSI90-99	9x9	90% IPA, 30% DI H2O (1200 ml)	Laundered Polyester	150 wipes/pail 2 pails/case	300 wipes/case
VTPNWSI99-99	9x9	99% IPA, 1% DI H2O (1200 ml)	Laundered Polyester	150 wipes/pail 2 pails/case	300 wipes/case

PRE-SATURATED



VALUSAT™ PRE-SATURATED ETHANOL POLYESTER WIPER PAIL

- Saturated in semiconductor grade solution, filtered to 0.2 mp
- Hinge-lid pail enables easy bulk usage without solvent evaporation
- Ideal for critical wiping applications
- Ideal for general use in pharmaceutical and semiconductor industries
- Laundered and packaged in a critical environment
- Custom solvent blends available

Characteristics:

- 100% continuous filament polyester
- Solution of ethanol and deionized 18 mega ohm water



Part Number	Size	Solution Mix	Wipe	Packaging	Total/Case
VTPNWSE10-99	9x9	10% Ethanol, 90% DI H2O	Laundered Polyester	150 wipes/pail 2 pails/case	300 wipes/case
VTPNWSE70-99	9x9	70% Ethanol, 30% DI H2O	Laundered Polyester	150 wipes/pail 2 pails/case	300 wipes/case
VTPNWSE90-99	9x9	70% Ethanol, 30% DI H2O	Laundered Polyester	150 wipes/pail 2 pails/case	300 wipes/case

VALUSAT™ PRE-SATURATED POLYESTER WIPER REFILL PACK

- Wiper refill for ValuSat Pre-Saturated Polyester Wiper Pail
- Saturated in semiconductor grade solution, filtered to 0.2 µm
- Laundered and packaged in a vacuum sealed bag
- Ideal for critical wiping applications
- Ideal for general use in pharmaceutical and semiconductor industries

Custom solvent blends available

- 100% continuous filament 85 denier polyester
- Solution of isopropyl alcohol and deionized 18 mega ohm water



PRE-SATURATED



Part Number	Size	Solution Mix	Wipe	Packaging	Total/Case
VTPNWSI10R-99	9x9	10% IPA, 90% DI H2O (1200 ml)	Laundered Polyester	75 ea/bag 2 bags/pack 4 pack/case	600 wipes/case
VTPNWSI50R-99	9x9	50% IPA, 50% DI H2O (1200 ml)	Laundered Polyester	75 ea/bag 2 bags/pack 4 pack/case	600 wipes/case
VTPNWSI70R-99	9x9	70% IPA, 30% DI H2O (1200 ml)	Laundered Polyester	75 ea/bag 2 bags/pack 4 pack/case	600 wipes/case
VTPNWSI90R-99	9x9	90% IPA, 10% DI H2O (1200 ml)	Laundered Polyester	75 ea/bag 2 bags/pack 4 pack/case	600 wipes/case
VTPNWSI99R-99	9x9	99% IPA, 1% DI H2O (1200 ml)	Laundered Polyester	75 ea/bag 2 bags/pack 4 pack/case	600 wipes/case



VALUSAT™ PRE-SATURATED LASER SEALED EDGE POLYESTER WIPER PAIL

- Saturated in semiconductor grade solution, filtered to 0.2 µm
- Laser sealed edge provides maximum protection against particulate contamination
- Hinge-lid pail enables easy bulk usage without solvent evaporation
- Laundered and packaged in a critical environment
- Ideal for critical wiping applications
- Ideal for general use in pharmaceutical and semiconductor industries
- Custom solvent blends available

Characteristics:

- 100% continuous filament polyester
- Solution of isopropyl alcohol and deionized 18 mega ohm water



PRE-SATURATED



Part Number	Size	Solution Mix	Wipe	Packaging	Total/Case
VTPNWLSI06-99	9x9	6 % IPA, 94% DI H2O (1200 ml)	Laser Edge, Laundered Polyester	150 wipes/pail 2 pails/case	300 wipes/case
VTPNWLSI10-99	9x9	10% IPA, 90% DI H2O (1200 ml)	Laser Edge, Laundered Polyester	150 wipes/pail 2 pails/case	300 wipes/case
VTPNWLSI70-99	9x9	70% IPA, 30% DI H2O (1200 ml)	Laser Edge, Laundered Polyester	150 wipes/pail 2 pails/case	300 wipes/case
VTPNWLSI70-1212	12x12	70% IPA, 30% DI H2O (1200 ml)	Laser Edge, Laundered Polyester	120 wipes/pail 2 pails/case	240 wipes/case
VTPNWLSI90-99	9x9	90% IPA, 10% DI H2O (1200 ml)	Laser Edge, Laundered Polyester	150 wipes/pail 2 pails/case	300 wipes/case



PRE-SATURATED



VALUSAT™ PRE-SATURATED METHANOL LASER SEALED EDGE POLYESTER WIPER PAIL

- Saturated in semiconductor grade solution, filtered to 0.2 µm
- Laser sealed edge provides maximum protection against particulate contamination
- Hinge-lid pail enables easy bulk usage without solvent evaporation
- Laundered and packaged in a critical environment
- Ideal for critical wiping applications
- Ideal for general use in pharmaceutical and semiconductor industries

Characteristics:

- 100% continuous filament polyester
- Solution of 100% Methanol



Class 4 or higher

Part Number	Size	Solution Mix	Wipe	Packaging	Total/Case
VTPNWLSM100-99	9x9	100% Methanol (1200 ml)	Laser Edge, Laundered Polyester	30 wipes/pouch 5 pouches/pail 2 pails/case	150 wipes/case

PRE-SATURATED



VALUSAT™ PRE-SATURATED ETHYL ACETATE LASER SEALED EDGE POLYESTER WIPER PAIL

- Saturated in semiconductor grade solution, filtered to 0.2 µm
- Laser sealed edge provides maximum protection against particulate contamination
- Hinge-lid pail enables easy bulk usage without solvent evaporation
- Laundered and packaged in a critical environment
- Ideal for critical wiping applications
- Ideal for general use in pharmaceutical and semiconductor industries

Characteristics:

- 100% continuous filament polyester
- Solution of 100% Ethyl Acetate



Class 4 or higher

Part Number	Size	Solution Mix	Wipe	Packaging	Total/Case
VTPNWLSEA100-99	9x9	100% Ethyl Acetate (1200 ml)	Laser Edge, Laundered Polyester	30 wipes/pouch 5 pouches/pail 2 pails/case	150 wipes/case

PRE-SATURATED



VALUSAT™ PRE-SATURATED LASER SEALED EDGE POLYESTER WIPER REFILL PACK

- Wiper refill for ValuSat Pre-Saturated Polyester Wiper Pail, Laser Sealed Edge
- Saturated in semiconductor grade solution, filtered to 0.2 µm
- Laser sealed edge provides maximum protection against particulate contamination
- Laundered and packaged in a critical environment
- Ideal for critical wiping applications
- Ideal for general use in pharmaceutical and semiconductor industries
- Custom solvent blends available

Characteristics:

- 100% continuous filament polyester
- Solution of isopropyl alcohol and deionized 18 mega ohm water



Class 4 or higher

Part Number	Size	Solution Mix	Wipe	Packaging	Total/Case
VTPNWLSI10R-99	9x9	10% IPA, 90% DI H2O	Laser Edge, Laundered Polyester	75 ea/bag 2 bags/pack 4 pack/case	600 wipes/case
VTPNWLSI70R-99	9x9	70% IPA, 30% DI H2O	Laser Edge, Laundered Polyester	75 ea/bag 2 bags/pack 4 pack/case	600 wipes/case
VTPNWLSI90R-99	9x9	90% IPA, 10% DI H2O	Laser Edge, Laundered Polyester	75 ea/bag 2 bags/pack 4 pack/case	600 wipes/case

VALUSAT™ PRE-SATURATED BORDER SEALED EDGE POLYESTER WIPER PAIL

- Durable and soft
- Pressure and heat provides a sealed border, resulting in maximum fiber retention
- Saturated in semiconductor grade solution, filtered to 0.2 µm
- Hinge-lid pail enables easy bulk usage without solvent evaporation
- Laundered and packaged in a critical environment
- Ideal for general use in pharmaceutical and semiconductor industries
- Ideal for critical wiping applications where cleanliness and absorbency are important

Characteristics:

- 100% continuous filament polyester
- Solution for isopropyl alcohol and deionized 18 mega ohm water



PRE-SATURATED



Part Number	Size	Solution Mix	Wipe	Packaging	Total/Case
VTPNWPHSI10-99	9x9	10% IPA, 90% DI H2O (1200 ml)	Border Sealed Edge Laundered Polyester	150 wipes/pail 2 pail/case	300 wipes/case
VTPNWPHSI70-99	9x9	70% IPA, 30% DI H2O (1200 ml)	Border Sealed Edge Laundered Polyester	150 wipes/pail 2 pail/case	300 wipes/case
VTPNWPHSI100-99	9x9	100% IPA, (1200 ml)	Border Sealed Edge Laundered Polyester	150 wipes/pail 2 pail/case	300 wipes/case
Refill Pack					
VTPNWPHSI10R-99	9x9	10% IPA, 90% DI H2O (1200 ml)	Border Sealed Edge Laundered Polyester	75 ea/bag 2 bags/pack 2 pack/case	300 wipes/case
VTPNWPHSI70R-99	9x9	70% IPA, 30% DI H2O (1200 ml)	Border Sealed Edge Laundered Polyester	75 ea/bag 2 bags/pack 2 pack/case	300 wipes/case
VTPNWPHSI100R-99	9x9	100% IPA, (1200 ml)	Border Sealed Edge Laundered Polyester	75 ea/bag 2 bags/pack 2 pack/case	300 wipes/case



VALUSAT™ PRE-SATURATED 2-PLY BORDER SEALED EDGE POLYESTER WIPER FLEX PACK

- 2-Ply Border Sealed Edge uses pressure and heat to seal edge border, resulting in superior fiber retention; 2-Ply construction maximizes sorbency of liquids and particulates
- Saturated in semiconductor grade solution, filtered to 0.2 µm
- Packaged in a convenient, resealable pouch designed to reduce solvent evaporation
- Laundered and packaged in a critical environment
- Ideal for general use in pharmaceutical and semiconductor industries
- Ideal for critical wiping applications where cleanliness and absorbency are important

Characteristics:

- 100% continuous filament 85 denier polyester
- 2-Ply double-knit interlock (2-Ply Border Sealed Edge wiper only)
- Solution of 70% isopropyl alcohol, 30% deionized 18 mega ohm water



PRE-SATURATED



Part Number	Size	Solution Mix	Wipe	Packaging	Total/Case
VT2PNWPHSI70F-99	9x9	70% IPA, 30% DI H2O (1200 ml)	Border Sealed Edge Laundered 2ply Polyester	30 wipers/pouch 20 pouches/case	600 wipes/case
VT2PNWPHSI70F-1212	12x12	70% IPA, 30% DI H2O (1200 ml)	Border Sealed Edge Laundered 2ply Polyester	30 wipers/pouch 20 pouches/case	600 wipes/case



PRE-SATURATED



VALUSAT™ PRE-SATURATED LASER SEALED EDGE POLYESTER WIPER FLEX PACK

- Laser Sealed Edge provides maximum protection against particulate contamination
- Saturated in semiconductor grade solution, filtered to 0.2 µm
- Packaged in a convenient, resealable pouch designed to reduce solvent evaporation
- Laundered and packaged in a critical environment
- Ideal for critical wiping applications
- Ideal for use in pharmaceutical and semiconductor industries

Characteristics:

- 100% continuous filament 85 denier polyester
- 2-Ply double-knit interlock (2-Ply Border Sealed Edge wiper only)
- Solution of 70% isopropyl alcohol, 30% deionized 18 mega ohm water



Class 3 or higher

Part Number	Size	Solution Mix	Wipe	Packaging	Total/Case
VTPNWSI70F-99	9x9	70% IPA, 30% DI H2O (1200 ml)	Laser Edge Laundered Polyester	30 wipers/pouch 20 pouches/case	600 wiper/case

PRE-SATURATED



VALUSAT™ PRE-SATURATED LASER SEALED EDGE POLYESTER WIPER IN ESD POUCH

- Durable and soft
- Saturated in semiconductor grade solution, filtered to 0.2 µm
- Laser sealed edge provides superior protection against particulate contamination
- Laundered and packaged in a controlled environment
- Packaged in a resealable static shield bag for ESD sensitive environments
- Ideal for critical wiping applications where static control is paramount

Characteristics:

- 100% continuous filament polyester
- Solution of 70% isopropyl alcohol, 30% deionized 18 mega ohm water



Class 4 or higher

ESD Protected Products

Part Number	Size	Solution Mix	Wipe	Packaging	Total/Case
VTPNWSI06-99F	9x9	6% IPA, 94% DI H2O (333 ml)	Laser Edge Laundered Polyester	50 ea/bag 10 bags/case	500 wiper/case
VTPNWSI70-99F	9x9	70% IPA, 30% DI H2O (335 ml)	Laser Edge Laundered Polyester	50 ea/bag 10 bags/case	500 wiper/case

STERILE



VALUSAT™ PRE-SATURATED SPUNLACE NONWOVEN WIPER, PERFORATED ROLL

- Saturated in electronics grade solution, filtered to 0.2 µm
- Perforated roll and durable, resealable tub enable easy bulk usage without solvent evaporation
- Excellent general purpose wiper for non-critical applications

Characteristics:

- Spun-lace nonwoven blends of 45% polypropylene/55% cellulose
- Solution of 70% isopropyl alcohol, 30% deionized 18 mega ohm water

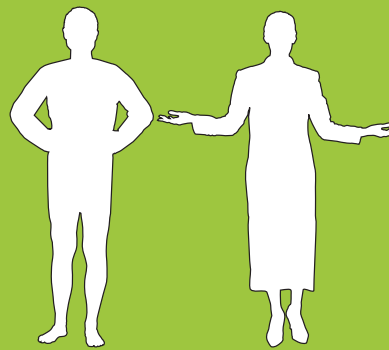


Class 8 or higher

Part Number	Size	Solution Mix	Wipe	Packaging	Total/Case
VTSNTRI70-7565	7.5x6.5	70% IPA, 30% DI H2O	Perforated roll, poly/cell wipe	100 wiper roll, 6 tubs/cs	600 wiper/case

APPAREL

「 COMPLETE PROTECTION, GREATER COMFORT 」



HEADWEAR
FACEWEAR
GARMENTS
FOOTWEAR

Valutek garments are designed to be your frontline defense against contamination while remaining comfortable to wear. Our high quality materials conform to the most rigorous and documented test standards, and undergo independent quality testing to ensure consistent performance. Each garment is individually inspected for size, material, and workmanship, and is then flat packed and vacuum sealed in clean poly bags.

We have four different apparel materials, depending on your needs.

Polypropylene (PP)



MacroTek

Made from 100% virgin spun bond polypropylene, and is ideal as an undergarment (bouffant cap, shoe cover).

This non-woven, lightweight, breathable fabric provides a low-cost solution for protection against dry particulates.

Polyethylene Coated Polypropylene (PCPP)



MicroTek

Same as Polypropylene, but with a polyethylene coating. PCPP is also impervious to liquids, lint-free, and has

excellent tensile and tear resistance. Provides economical

protection to workers exposed to splashes from certain chemicals, blood, and particulates.

Cross-linked Polyethylene (CPE)



MicroTek

An economical alternative when a low particulate material is required. Low density CPE is impervious to liquids, lint-free, and does not run or bleed when exposed to water.

Microporous (MP)



NanoTek

MP is a highly breathable, non-linting film that is bonded with a nonwoven fabric, offering an ultra-cool, comfortable alternative to

TYVEK® or other similar materials. It provides superior performance against non-toxic particulates, liquids, spray, and dust.

BOUFFANT CAP

- Disposable, comfortable, breathable, and lightweight
- Can be worn with a hood for added protection
- Filament-covered synthetic elastic edge

Characteristics:

- Non-linting, non-woven polypropylene



MacroTek



BOUFFANT CAPS

Part Number	Material	Size	Weight	Color	Packaging	Total/Case
VTBFCW-21	Polypropylene	21"	14 gm2	White	100 ea/bag, 10 bags/cs	1000/case
VTBFCWHW-21	Polypropylene	21"	17 gm2	White	100 ea/bag, 10 bags/cs	1000/case
VTBFCBL-24	Polypropylene	24"	14 gm2	Blue	100 ea/bag, 10 bags/cs	1000/case
VTBFCW-24	Polypropylene	24"	14 gm2	White	100 ea/bag, 10 bags/cs	1000/case
VTBFCWHW-24	Polypropylene	24"	17 gm2	White	100 ea/bag, 10 bags/cs	1000/case

Class
8
or higher

Latex
Free

BEARD COVER

- Full coverage
- Disposable, comfortable, breathable, and lightweight
- Filament-covered synthetic elastic edge

Characteristics:

- Non-linting, non-woven polypropylene



MacroTek



BEARD COVERS

Part Number	Material	Size	Weight	Color	Packaging	Total/Case
VTBCV-18	Polypropylene	18"	14 gm2	White	100/bag, 10 bags/cs	1000/case
VTBCVHW-18	Polypropylene	18"	17 gm2	White	100/bag, 10 bags/cs	1000/case
VTBCV-21	Polypropylene	21"	14 gm2	White	100/bag, 10 bags/cs	1000/case

Class
8
or higher

Latex
Free

3-PLY POLYPROPYLENE MASK

- Disposable, comfortable, and lightweight
- Adjustable flat aluminum nosepiece
- Available with knit ear loop, covered round ear loop, or ties

Characteristics:

- 3-ply non-linting, non-woven polypropylene
- Bacterial & particle filtration efficiency greater than 95% at .5 micron



MacroTek



MASK/EAR LOOPS

Part Number	Material	Style	Size	Color	Packaging	Total/Case
VTMASKEL-BL	Polypropylene	Knit Ear loop	7" x 3.5"	Blue	50/ea bag, 20 bags/cs	1000/case
VTMASKEL-WH	Polypropylene	Knit Ear loop	7" x 3.5"	White	50/ea bag, 20 bags/cs	1000/case
VTMASKELR-WH	Polypropylene	Round Ear loop	7" x 3.5"	White	50/ea bag, 20 bags/cs	1000/case
VTMASKELR-BL	Polypropylene	Round Ear loop	7" x 3.5"	Blue	1/ea bag, 50/master bag 20 master bags/cs	1000/case
VTMASK4T-BL	Polypropylene	4 ties	7" x 3.5"	Blue	50/ea bag, 20 bags/cs	1000/case

Class
5
or higher

Latex
Free

FACEMASK



3-PLY POLYESTER CELLULOSE CRITICAL USE FACEMASK

- Disposable, comfortable, and lightweight
- Hypoallergenic
- Adjustable flat aluminum nosepiece
- Available with knit ear loop, covered round ear loop, or headband
- Available sterile through Cobalt 60 processing

Characteristics:

- 3-ply non-linting, non-woven sewn poly/cell construction
- Bacterial & particle filtration efficiency greater than 95% at .5 micron



Part Number	Material	Style	Size	Color	Packaging	Total/Case
VTMASK4TY-WH	Polyester	4 Ties	7" x 3.5"	White	50 ea/bag, 20 bags/cs	1000/case
VTMASK4TY9-WH	Polyester	4 Ties	9" X 3.5"	White	50 ea/bag, 20 bags/cs	1000/case
VTMASKT8EL-WH	Polyester	Ear loops	8" x 3.5"	White	50 ea/bag, 10 bags/cs	500/case
VTMASKT8HB-WH	Polyester	Headband	8" x 3.5"	White	50 ea/bag, 10 bags/cs	500/case
STERILE VERSION						
VTMASK4TYIR-WH	Polyester	4 Ties	7" x 3.5"	White	1 pc/bag, 50 bags/pk, 20 pks/cs	1000/case
VTMASK4TY9IR-WH	Polyester	4 Ties	9" x 3.5"	White	1 pc/bag, 50 bags/pk, 20 pks/cs	1000/case

DUCKBILL MASK



3-PLY POLYESTER CELLULOSE CRITICAL USE DUCKBILL MASK

- Disposable, comfortable, and lightweight pouch style (duckbill)
- Designed for use with goggles
- Hypoallergenic
- Adjustable flat aluminum nosepiece
- Floss-covered elastic round headband
- Available sterile through Cobalt 60 processing

Characteristics:

- 3-ply non-linting, non-woven polypropylene
- Bacterial & particle filtration efficiency greater than 95% at .5 micron
- Ultrasonic bonding for cleanliness
- Bacteria Filtration Efficiency (BFE) Low Delta P rating for breathability



Part Number	Material	Style	Size	Color	Packaging	Total/Case
VTMASK-DB	Polyester	Headband	7" x 3.5"	White	50/Bags, 4 bags/cs	200/case
STERILE VERSION						
VTMASKIR-DB	Polyester	Headband	9.5" x 3.5"	White	1 pc/bag, 50 bags/master bag, 10 master bags/cs	200/case

FACE VEIL



PERSONAL FACE VEIL

- Disposable, comfortable, breathable, and lightweight
- Hygienic alternative to reusable veils
- Adjustable flat aluminum nosepiece
- Available with snaps (for use with Microporous Hood) or headband (for separate use)

Characteristics:

- Non-linting, spunlace nonwoven, hydro-entangled poly/cell construction
- Bacterial & particle filtration efficiency greater than 95% at .5 micron
- Ultrasonic bonding for cleanliness
- Bacteria Filtration Efficiency (BFE) Low Delta P rating for breathability



Part Number	Material	Style	Size	Color	Packaging	Total/Case
VTVEIL-SNP	55% Polyester/45% cellulose	Snaps	12" x 15"	White	50 ea/bag, 3 bags/cs	150/case
VTVEIL-EL	55% Polyester/45% cellulose	Headband	12" x 15"	White	50 ea/bag, 3 bags/cs	150/case

MICROPOROUS HOOD

- Disposable, breathable, lightweight open face design

Characteristics:

- Non-linting, spunbond polypropylene coated with a microporous film for protection against non-hazardous liquids
- Ultrasonic bonding for cleanliness



HEADWEAR



Part Number	Material	Size	Color	Packaging	Total/Case
VTMHOOD-LG	Spunbond polypropylene	LG	White	50 ea/bag 2 bags/cs	100/case
VTMHOOD-XL	Spunbond polypropylene	XL	White	50 ea/bag 2 bags/cs	100/case



Selection Hints

- Garment should allow for movement in arms and legs to prevent rips and skin exposure, both of which lead to particle contamination.
- Closures at the wrists and ankles should be tight.
- Material selection should be appropriate for each specific application and environment.



Size Chart

	XXS	XS	SM	MD	LG	XL	XX	XXX	4X
Weight	90-100	100-110	110-130	130-150	150-170	170-200	200-220	220-240	240-290
Height	5'0-5'2	5'2-5'5	5'5-5'7	5'4-5'8	5'8-5'10	5'10-6'2	6'2-6'4	6'3-6'5	6'4-6'6

POLYPROPYLENE LABCOAT

- Disposable, comfortable, breathable, and lightweight
- Knee length
- Five snap closures, 3 pockets, and elastic cuffs
- Characteristics: Non-linting, nonwoven polypropylene



LABCOAT



Part Number	Material	Size	Color	Packaging	Total/Case
VTLBCT-XXS	Polypropylene	XXS	White	10 ea/bag, 3 bags/cs	30/case
VTLBCT-XS	Polypropylene	XS	White	10 ea/bag 3 bags/cs	30/case
VTLBCT-SM	Polypropylene	SM	White	10 ea/bag, 3 bags/cs	30/case
VTLBCT-MD	Polypropylene	MD	White	10 ea/bag, 3 bags/cs	30/case
VTLBCT-LG	Polypropylene	LG	White	10 ea/bag, 3 bags/cs	30/case
VTLBCT-XL	Polypropylene	XL	White	10 ea/bag, 3 bags/cs	30/case
VTLBCT-2X	Polypropylene	2X	White	10 ea/bag, 3 bags/cs	30/case
VTLBCT-3X	Polypropylene	3X	White	10 ea/bag, 3 bags/cs	30/case
VTLBCT-4X	Polypropylene	4X	White	10 ea/bag, 3 bags/cs	30/case



LABCOAT



POLYETHYLENE COATED POLYPROPYLENE LABCOAT

- Disposable, comfortable, breathable, and lightweight
- Knee length
- Five snap closures, 3 pockets, and elastic cuffs

Characteristics:

- Non-linting, nonwoven polypropylene coated with polyethylene for protection against non-hazardous liquids



Class 6 or higher

Latex Free

Part Number	Material	Size	Color	Packaging	Total/Case
VTLBCT-SM	Coated Polypropylene	SM	White	10 ea/bag, 3 bags/cs	30/case
VTLBCT-MD	Coated Polypropylene	MD	White	10 ea/bag, 3 bags/cs	30/case
VTLBCT-LG	Coated Polypropylene	LG	White	10 ea/bag, 3 bags/cs	30/case
VTLBCT-XL	Coated Polypropylene	XL	White	10 ea/bag, 3 bags/cs	30/case
VTLBCT-2X	Coated Polypropylene	2X	White	10 ea/bag, 3 bags/cs	30/case
VTLBCT-3X	Coated Polypropylene	3X	White	10 ea/bag, 3 bags/cs	30/case
VTLBCT-4X	Coated Polypropylene	4X	White	10 ea/bag, 3 bags/cs	30/case

LABCOAT



MICROPOROUS LABCOAT

- Disposable, comfortable, breathable, and lightweight
- Knee length
- Five snap closures, 3 pockets, and elastic cuffs

Characteristics:

- Non-linting, spunbond polypropylene coated with a microporous film for protection against non-hazardous liquids



Class 4 or higher

Latex Free

Part Number	Material	Size	Color	Packaging	Total/Case
VTMLBCT-SM	Spunbond polypropylene	SM	White	5 ea/bag 6 bags/cs	30/case
VTMLBCT-MD	Spunbond polypropylene	MD	White	5 ea/bag 6 bags/cs	30/case
VTMLBCT-LG	Spunbond polypropylene	LG	White	5 ea/bag 6 bags/cs	30/case
VTMLBCT-XL	Spunbond polypropylene	XL	White	5 ea/bag 6 bags/cs	30/case
VTMLBCT-2X	Spunbond polypropylene	2X	White	5 ea/bag 6 bags/cs	30/case
VTMLBCT-3X	Spunbond polypropylene	3X	White	5 ea/bag 6 bags/cs	30/case

POLYPROPYLENE COVERALL

- Disposable, comfortable, breathable, and lightweight full-body protection
- Zippered closure, elastic cuffs and ankles

Characteristics:

- Non-linting, nonwoven spunbond polypropylene



COVERALL



MacroTek®

Part Number	Material	Size	Color	Packaging	Total/Case
VTCVRL-SM	Polypropylene	SM	White	5 ea/bag, 5 bags/cs	25/case
VTCVRL-MD	Polypropylene	MD	White	5 ea/bag, 5 bags/cs	25/case
VTCVRL-LG	Polypropylene	LG	White	5 ea/bag, 5 bags/cs	25/case
VTCVRL-XL	Polypropylene	XL	White	5 ea/bag, 5 bags/cs	25/case
VTCVRL-XX	Polypropylene	XX	White	5 ea/bag, 5 bags/cs	25/case
VTCVRL-XXX	Polypropylene	XXX	White	5 ea/bag, 5 bags/cs	25/case
VTCVRL-4X	Polypropylene	4X	White	5 ea/bag, 5 bags/cs	25/case

Class
7
or higherLatex
Free

POLYETHYLENE COATED POLYPROPYLENE COVERALL

- Disposable, comfortable, breathable, and lightweight full-body protection
- Zippered closure, elastic cuffs and ankles

Characteristics:

- Non-linting, nonwoven polypropylene coated with polyethylene for protection against non-hazardous liquids



COVERALL



MicroTek®

Part Number	Material	Size	Color	Packaging	Total/Case
VTCVRLC-SM	Coated Polypropylene	SM	White	5 ea/bag, 5 bags/cs	25/case
VTCVRLC-MD	Coated Polypropylene	MD	White	5 ea/bag, 5 bags/cs	25/case
VTCVRLC-LG	Coated Polypropylene	LG	White	5 ea/bag, 5 bags/cs	25/case
VTCVRLC-XL	Coated Polypropylene	XL	White	5 ea/bag, 5 bags/cs	25/case
VTCVRLC-2X	Coated Polypropylene	2X	White	5 ea/bag, 5 bags/cs	25/case
VTCVRLC-3X	Coated Polypropylene	3X	White	5 ea/bag, 5 bags/cs	25/case
VTCVRLC-4X	Coated Polypropylene	4X	White	5 ea/bag, 5 bags/cs	25/case

Class
6
or higherLatex
Free

COVERALLS



MICROPOROUS COVERALL

- Disposable, comfortable, breathable, and lightweight full-body protection
- Zippered closure, elastic cuffs and ankles

Characteristics:

- Non-linting, spunbond polypropylene coated with a microporous film for protection against non-hazardous liquids



Class 4 or higher

Latex Free

Part Number	Size	Color	Packaging	Total/Case
VTMCVRL-SM	SM	White	5 ea/bag, 5 bags/cs	25/case
VTMCVRL-MD	MD	White	5 ea/bag, 5 bags/cs	25/case
VTMCVRL-LG	LG	White	5 ea/bag, 5 bags/cs	25/case
VTMCVRL-XL	XL	White	5 ea/bag, 5 bags/cs	25/case
VTMCVRL-2X	2X	White	5 ea/bag, 5 bags/cs	25/case
VTMCVRL-3X	3X	White	5 ea/bag, 5 bags/cs	25/case

COVERALLS



MICROPOROUS COVERALL WITH HOOD AND BOOTS

- Disposable, comfortable, breathable, and lightweight full-body protection
- Zippered closure, elastic cuffs and ankles, with hood and attached boots

Characteristics:

- Non-linting, spunbond polypropylene coated with a microporous film for protection against non-hazardous liquids



Class 4 or higher

Latex Free

Part Number	Size	Color	Packaging	Total/Case
VTMCVRLHB-SM	SM	White	5 ea/bag 5 bags/cs	25/case
VTMCVRLHB-MD	MD	White	5 ea/bag 5 bags/cs	25/case
VTMCVRLHB-LG	LG	White	5 ea/bag 5 bags/cs	25/case
VTMCVRLHB-XL	XL	White	5 ea/bag 5 bags/cs	25/case
VTMCVRLHB-2X	2X	White	5 ea/bag 5 bags/cs	25/case
VTMCVRLHB-3X	3X	White	5 ea/bag 5 bags/cs	25/case
VTMCVRLHB-4X	4X	White	5 ea/bag 5 bags/cs	25/case

SLEEVE



POLYPROPYLENE SLEEVE

- Disposable, breathable, and lightweight
- Comfortable elastic cuffs at the wrist and arm

Characteristics:

- Non-linting, nonwoven polypropylene



Class 7 or higher

Latex Free

Part Number	Material	Size	Color	Packaging	Total/Case
VTSLV-18	Polypropylene	18"	White	10 ea/roll, 10 rolls/bag, 2 bags/cs	200/case
VTSLV-21	Polypropylene	21"	White	10 ea/roll, 10 rolls/bag, 2 bags/cs	200/case

POLYETHYLENE COATED POLYPROPYLENE SLEEVE

- Disposable, breathable, and lightweight
- Comfortable elastic cuffs at the wrist and arm

Characteristics:

- Non-linting, nonwoven polypropylene coated with polyethylene for protection against non-hazardous liquids



MicroTek.



SLEEVE

Part Number	Material	Size	Color	Packaging	Total/Case
VTSLVC-18	Coated Polypropylene	18"	White	10 ea/roll, 10 rolls/bag, 2 bags/cs	200/case
VTSLVC-21	Coated Polypropylene	21"	White	10 ea/roll, 10 rolls/bag, 2 bags/cs	200/case

Class
6
or higher

Latex
Free

MICROPOROUS SLEEVE

- Disposable, breathable, and lightweight
- Comfortable elastic cuffs at the wrist and arm

Characteristics:

- Non-linting, spunbond polypropylene coated with a microporous film for protection against non-hazardous liquids



NanoTek.



SLEEVE

Part Number	Material	Size	Color	Packaging	Total/Case
VTMSLV-18	Microporous	18"	White	10 ea/roll, 10 rolls/bag, 2 bags/cs	200/case
VTMSLV-21	Microporous	21"	White	10 ea/roll, 10 rolls/bag, 2 bags/cs	200/case

Class
4
or higher

Latex
Free

POLYPROPYLENE SHOE COVER

- Disposable, lightweight, and breathable, yet strong and durable
- Elastic ankle cuffs

Characteristics:

- Non-linting, nonwoven polypropylene with stitched seams



MacroTek.



SHOE COVER

Part Number	Material	Style	Size	Color	Packaging	Total/Case
VTSHCVPP-LG	Polypropylene	Standard PP	LG 16"	Blue	100 ea/bag, 3 bags/cs	300/case
VTSHCVPP-XL	Polypropylene	Standard PP	XL 18"	Blue	100 ea/bag, 3 bags/cs	300/case

Class
7
or higher

Latex
Free

SHOE COVER



ANTI-SKID POLYPROPYLENE SHOE COVER

- Disposable, lightweight, and breathable, yet strong and durable
- Elastic ankle cuffs

Characteristics:

- Non-linting, nonwoven polypropylene with stitched seams
- Sprayed latex anti-skid safety treads



Class 7 or higher

Latex Free

Part Number	Material	Size	Color	Packaging	Total/Case
VTSHCVAS-LG	Polypropylene	LG 16"	Blue	100 ea/bag, 3 bags/cs	300/case
VTSHCVAS-XL	Polypropylene	XL 18"	Blue	100 ea/bag, 3 bags/cs	300/case

SHOE COVER



ANTI-SKID POLYPROPYLENE ESD SHOE COVER

- Disposable, lightweight, and breathable, yet strong and durable
- Elastic ankle cuffs
- Conductive knit, sole-stitched 20" ESD ribbon provides static dissipation

Characteristics:

- Non-linting, nonwoven polypropylene with stitched seams
- Sprayed latex anti-skid safety treads



Class 7 or higher

Latex Free

ESD

Part Number	Size	Style	Packaging	Total/Case
VTSHCVAESDF-LG	LG 16"	Standard Ribbon	100ea/ Bag 3 Bags/case	300/Case
VTSHCVAESDF-XL	XL 18"	Standard Ribbon	100ea/ Bag 3 Bags/case	300/Case
VTSHCVAESDLF-L	LG 16"	Long Ribbon	100ea/ Bag 3 Bags/case	300/Case
VTSHCVAESDLF-X	XL 18"	Long Ribbon	100ea/ Bag 3 Bags/case	300/Case
VTSHCVCESDLF-XL	XL 18"	Coated Polypropylene	100ea/ Bag 3 Bags/case	300/Case Long Ribbon

CROSS-LINKED POLYETHYLENE SHOE COVER

- Disposable and lightweight, yet strong and durable
- Elastic ankle cuffs
- Heat-sealed seams
- Long-lasting sole traction

Characteristics:

- Non-particulating, extruded .05mm cross-linked white polyethylene for protection against non-hazardous liquids



SHOE COVER

Part Number	Material	Size	Weight	Color	Packaging	Total/Case
VTSHCVLLW-BL	Polyethylene	LG 16"	3 mil	Blue	100 ea/bag, 10 bags/cs	1000/case
VTSHCVPL-WH	Polyethylene	LG 16"	5 mil	White	100 ea/bag, 3 bags/cs	300/case
VTSHCVPL-BL	Polyethylene	LG 16"	5 mil	Blue	100 ea/bag, 3 bags/cs	300/case
VTSHCVPLHW-BL	Polyethylene	LG 16"	8 mil	Blue	100 ea/bag, 3 bags/cs	300/case
VTSHCVPLHWX-BL	Polyethylene	XL 18"	8 mil	Blue	100 ea/bag, 3 bags/cs	300/case
VTSHCVPLHWX-WH	Polyethylene	XL 18"	8 mil	White	100 ea/bag, 3 bags/cs	300/case

Class
6
or higherLatex
Free

POLYETHYLENE COATED POLYPROPYLENE SHOE COVER

- Disposable and lightweight
- Elastic ankle cuffs
- Stitched seams

Characteristics:

- Non-linting, nonwoven polypropylene coated with polyethylene for protection against liquids



SHOE COVER

Part Number	Material	Size	Color	Packaging	Total/Case
VTSHCVPPC-LG	Coated Polypropylene	LG 16"	Blue	100 ea/bag, 3 bags/cs	300/case
VTSHCVPPC-XL	Coated Polypropylene	XL 18"	Blue	100 ea/bag, 3 bags/cs	300/case

Class
6
or higherLatex
Free

Our Commitment To You

Order in by 5:00pm EST



Shipped on the same day*

or we pay your freight

* for in-stock items

SHOE COVER



POLYETHYLENE COATED POLYPROPYLENE SHOE COVER WITH PVC SOLE

- Disposable, breathable, and lightweight
- Elastic ankle cuffs
- Stitched seams

Characteristics:

- Non-linting, nonwoven polypropylene coated with polyethylene for protection against liquids
- Durable, non-skid PVC sole



Class 4 or higher

Latex Free

Part Number	Material	Size	Color	Packaging	Total/Case
VTSHCVPLVW-SM	Coated Polypropylene	SM 14"	White	50 ea/bag, 4 bags/cs	200/case
VTSHCVPLVB-SM	Coated Polypropylene	SM 14"	Blue	50 ea/bag, 4 bags/cs	200/case
VTSHCVPLVW-MD	Coated Polypropylene	MD 16"	White	50 ea/bag, 4 bags/cs	200/case
VTSHCVPLVB-MD	Coated Polypropylene	MD 16"	Blue	50 ea/bag, 4 bags/cs	200/case
VTSHCVPLVW-LG	Coated Polypropylene	LG 18"	White	50 ea/bag, 4 bags/cs	200/case
VTSHCVPLVB-LG	Coated Polypropylene	LG 18"	Blue	50 ea/bag, 4 bags/cs	200/case
VTSHCVPLVW-XL	Coated Polypropylene	XL 20"	White	50 ea/bag, 4 bags/cs	200/case
VTSHCVPLVB-XL	Coated Polypropylene	XL 20"	Blue	50 ea/bag, 4 bags/cs	200/case

BOOT COVER



POLYETHYLENE COATED POLYPROPYLENE BOOT COVER WITH PVC SOLE

- Disposable, breathable, and lightweight
- Elastic leg cuffs
- Stitched seams

Characteristics:

- Non-linting, nonwoven polypropylene coated with polyethylene for protection against liquids
- Durable, non-skid PVC sole



Class 4 or higher

Latex Free

Part Number	Material	Size	Color	Packaging	Total/Case
VTBTCVPLVW-SM	Coated Polypropylene	SM 14"	White	20 ea/bag, 10 bags/cs	200/case
VTBTCVPLVW-MD	Coated Polypropylene	MD 16"	White	20 ea/bag, 10 bags/cs	200/case
VTBTCVPLVW-LG	Coated Polypropylene	LG 18"	White	20 ea/bag, 10 bags/cs	200/case
VTBTCVPLVW-XL	Coated Polypropylene	XL 20"	White	20 ea/bag, 10 bags/cs	200/case

GLOVES

「 PROTECT THE MOST VITAL TOOLS 」



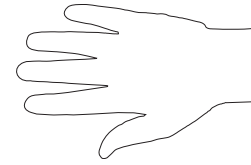
VINYL
LATEX
NITRILE

Gloves serve a critical function inside a cleanroom

because they make direct contact with both the operator and your product.

Choosing Your Gloves

We've made it easy to pick the right glove for your cleanroom. Just look for these symbols next to each wiper type:



MacroTek

Suitable for use in ISO 7+
(Class 10,000+)
environments or higher



MicroTek

Suitable for use in ISO 5-6
(Class 100-1,000)
environments



NanoTek

Suitable for use in ISO 3-4
(Class 1-10)
environments

Glove Elements

Natural Latex Rubber (Latex)

The most common material for gloves due to its durability, comfort, and dexterity. Latex is ideal when high dexterity and tactile sensitivity is necessary. It provides excellent protection against contamination and chemicals such as alkalis, acids, alcohols, and ketones. In some people, latex proteins may cause an allergic reaction for which nitrile gloves provide a good alternative.

Polyvinylchloride (PVC)

Known for its inherent cleanliness (low in both particles and ionic extractables), protection against solvents, ESD properties, and low cost. These attributes make vinyl gloves ideal for use in medical device manufacturing, microelectronics, and other similar controlled environments. A PVC glove fits looser on an operator's hand than latex or nitrile, which can reduce dexterity.

Acrylonitrile Butadiene Rubber (Nitrile)

Gloves made from nitrile, a petrol-chemical derivative, offer good dexterity and superior resistance to many types of chemicals. Compared to latex, nitrile is lower in particles, ionic extractables and non-volatile residues (NVR). Nitrile also has "memory" properties that adapt it to the hand for a more custom fit, reducing fatigue. It is three times more puncture resistant than latex, and also provides protection against cutting and scraping. Static-dissipative properties make nitrile ideal for all electronics industries.



Quality Checked

Valutek controls the glove specifications from inception to delivery in our distribution centers. Beginning with the acquisition of raw material, we select 100% virgin vinyl, latex, and nitrile, which is converted into gloves through a series of industry-standard processes. This ensures that all Valutek gloves exceed your quality specifications, guaranteed.



■ The five attributes to consider when selecting your gloves:

■ Particle Count

Number of particulate matter that comes off the gloves, typically measured in a dry test. Nitrile has the lowest amount of particles, followed by PVC and latex has the highest particle count.

■ Extractable Count

The amount of elements extracted from the gloves in a wash test, generally measured in Parts Per Billion (PPB) or Grams per Square Meter (g/m²). Washed nitrile has the lowest ionic counts, followed by PVC, and latex.

■ Electrostatic Discharge (ESD) Properties

The capacity of a glove to reduce static discharge. Both PVC and nitrile exhibit excellent ESD qualities.

■ Dexterity

Latex gloves fit tight on the hand, but have no “memory” to conform to your hand shape. Nitrile’s memory properties provide more comfort, but are slightly looser fitting than latex. PVC has much lower dexterity and is recommended when tactile requirements are low.

■ Chemical Compatibility

Latex is a good choice for protection against acids. Nitrile has better resistance than latex to a broad range of chemicals and performs well with solvents and acids. PVC has poor acid/base resistance and is best suited for a dry environment. Note: Thin-walled gloves are only intended for splash protection.

Gloves Selection Chart

GOOD

BETTER

BEST

	NITRILE	PVC	LATEX
PARTICLE COUNT	<input checked="" type="checkbox"/>	<input checked="" type="checkbox"/>	<input type="checkbox"/>
EXTRACTABLE COUNT	<input checked="" type="checkbox"/>	<input checked="" type="checkbox"/>	<input type="checkbox"/>
ESD PROPERTIES	<input checked="" type="checkbox"/>	<input checked="" type="checkbox"/>	<input type="checkbox"/>
DEXTERITY	<input checked="" type="checkbox"/>	<input type="checkbox"/>	<input checked="" type="checkbox"/>
CHEMICAL COMPATIBILITY	<input checked="" type="checkbox"/>	<input type="checkbox"/>	<input checked="" type="checkbox"/>

PVC



PVC POWDERED 9.5" GLOVE

- Disposable and lightweight
- Beaded cuff
- Lightly powdered
- Static dissipative properties (ESD rated)
- Packaged in a carton glove box for easy dispensing
- Excellent general purpose glove for non-critical environments



Part Number	Size	Packaging	Total/Case
VTGVPX95-SM	SM	100 ea/box, 10 boxes/cs	1000/case
VTGVPX95-MD	MD	100 ea/box, 10 boxes/cs	1000/case
VTGVPX95-LG	LG	100 ea/box, 10 boxes/cs	1000/case
VTGVPX95-XL	XL	100 ea/box, 10 boxes/cs	1000/case

PVC



PVC POWDER-FREE CLEANROOM 12" GLOVE

- Disposable and lightweight
- Beaded cuff
- Cleanroom processed
- Chemically pure
- Powder-free
- Exceeds ESD performance of MIL-STD-1686
- Electrostatic dissipative with low ionic extractables
- Laundered and packaged in a critical environment
- Double bagged for maximum cleanliness
- Ideal for use in critical environments where cleanliness is paramount



Part Number	Size	Packaging	Total/Case
VTGVCRB12-SM	SM	100 ea/bag, 10 bags/cs	1000/case
VTGVCRB12-MD	MD	100 ea/bag, 10 bags/cs	1000/case
VTGVCRB12-LG	LG	100 ea/bag, 10 bags/cs	1000/case
VTGVCRB12-XL	XL	100 ea/bag, 10 bags/cs	1000/case

LATEX POWDERED 9" GLOVE

- Disposable and lightweight
- Beaded cuff
- Lightly powdered
- Packaged in a carton glove box for easy dispensing
- Excellent general purpose glove for non-critical environments



LATEX

MacroTek[®]

Part Number	Size	Packaging	Total/Case
VTGLPX90-SM	SM	100 ea/box, 10 boxes/cs	1000/case
VTGLPX90-MD	MD	100 ea/box, 10 boxes/cs	1000/case
VTGLPX90-LG	LG	100 ea/box, 10 boxes/cs	1000/case
VTGLPX90-XL	XL	100 ea/box, 10 boxes/cs	1000/case



LATEX POWDER-FREE 9" GLOVE

- Disposable and lightweight
- Beaded cuff
- Powder-Free
- Chlorinated
- Packaged in a carton glove box for easy dispensing
- Excellent general purpose glove for non-critical environments



LATEX

MicroTek[®]

Part Number	Size	Packaging	Total/Case
VTGLPFX90-SM	SM	100 ea/box, 10 boxes/cs	1000/case
VTGLPFX90-MD	MD	100 ea/box, 10 boxes/cs	1000/case
VTGLPFX90-LG	LG	100 ea/box, 10 boxes/cs	1000/case
VTGLPFX90-XL	XL	100 ea/box, 10 boxes/cs	1000/case



LATEX POWDER-FREE 9" CONTROLLED ENVIRONMENT GLOVE

- Disposable and lightweight
- Beaded cuff
- Powder-Free
- Cleanroom processed
- Bagged and vacuum sealed for cleanliness



LATEX

MicroTek[®]

Part Number	Size	Length	Packaging	Total/Case
VTGLPFB90-SM	SM	9"	100 ea/bag, 10 bags/cs	1000/case
VTGLPFB90-MD	MD	9"	100 ea/bag, 10 bags/cs	1000/case
VTGLPFB90-LG	LG	9"	100 ea/bag, 10 bags/cs	1000/case
VTGLPFB90-XL	XL	9"	100 ea/bag, 10 bags/cs	1000/case



LATEX



LATEX POWDER-FREE 12" CONTROLLED ENVIRONMENT GLOVE

- Disposable and lightweight
- Beaded cuff
- Powder-Free
- Cleanroom processed
- Laundered and packaged in a critical environment
- Double bagged in cleanroom polyethylene bags



Part Number	Size	Length	Packaging	Total/Case
VTGLPFB12-SM	SM	12"	100 ea/bag, 10 bags/cs	1000/case
VTGLPFB12-MD	MD	12"	100 ea/bag, 10 bags/cs	1000/case
VTGLPFB12-LG	LG	12"	100 ea/bag, 10 bags/cs	1000/case
VTGLPFB12-XL	XL	12"	100 ea/bag, 10 bags/cs	1000/case

LATEX



LATEX STERILE CLEANROOM 12" GLOVE

- Disposable and lightweight
- Beaded cuff
- Powder-Free
- Cleanroom processed
- Individually walleted Low-Density Polyethylene (LDPE) pouch for easy donning
- Validated sterile through Cobalt 60 processing
- Ideal for critical applications in aseptic environments



Part Number	Size	Packaging	Total/Case
VTGLCRBIR12-XS	XS	1 pair/pack, 10 pairs/master pack, 20 master packs/cs	200 pairs/case
VTGLCRBIR12-SM	SM	1 pair/pack, 10 pairs/master pack, 20 master packs/cs	200 pairs/case
VTGLCRBIR12-MD	MD	1 pair/pack, 10 pairs/master pack, 20 master packs/cs	200 pairs/case
VTGLCRBIR12-LG	LG	1 pair/pack, 10 pairs/master pack, 20 master packs/cs	200 pairs/case
VTGLCRBIR12-XL	XL	1 pair/pack, 10 pairs/master pack, 20 master packs/cs	200 pairs/case
VTGLCRBIR12-XX	XX	1 pair/pack, 10 pairs/master pack, 20 master packs/cs	200 pairs/case

NITRILE



NITRILE POWDERED 9.5" GLOVE

- Disposable and lightweight
- Beaded cuff
- Lightly powdered
- Natural white color
- Static dissipative properties (ESD rated)
- Packaged in a carton glove box for easy dispensing
- Excellent general purpose glove for non-critical environments



Part Number	Size	Packaging	Total/Case
VTGNPX95-SM	SM	100 ea/box, 10 boxes/cs	1000/case
VTGNPX95-MD	MD	100 ea/box, 10 boxes/cs	1000/case
VTGNPX95-LG	LG	100 ea/box, 10 boxes/cs	1000/case
VTGNPX95-XL	XL	100 ea/box, 10 boxes/cs	1000/case

NITRILE POWDER-FREE 9.5" GLOVE

- Disposable and lightweight
- Beaded cuff
- Powder-free
- Natural white color
- Chlorinated
- Static dissipative properties (ESD rated)
- Packaged in a carton glove box for easy dispensing
- Excellent general purpose glove for non-critical environments



NITRILE



Part Number	Size	Packaging	Total/Case
VTGNPFX95-SM	SM	100 ea/box, 10 boxes/cs	1000/case
VTGNPFX95-MD	MD	100 ea/box, 10 boxes/cs	1000/case
VTGNPFX95-LG	LG	100 ea/box, 10 boxes/cs	1000/case
VTGNPFX95-XL	XL	100 ea/box, 10 boxes/cs	1000/case



NITRILE POWDER-FREE 9.5" CONTROLLED ENVIRONMENT GLOVE

- Disposable and lightweight
- Beaded cuff
- Powder-free
- Natural white color
- Chlorinated
- Static dissipative properties (ESD rated)
- Bagged and vacuum sealed for cleanliness



NITRILE



Part Number	Size	Packaging	Total/Case
VTGNPFB95-SM	SM	100 ea/bag, 10 bags/cs	1000/case
VTGNPFB95-MD	MD	100 ea/bag, 10 bags/cs	1000/case
VTGNPFB95-LG	LG	100 ea/bag, 10 bags/cs	1000/case
VTGNPFB95-XL	XL	100 ea/bag, 10 bags/cs	1000/case



NITRILE POWDER-FREE 12" CONTROLLED ENVIRONMENT GLOVE

- Disposable and lightweight
- Beaded cuff
- Powder-free
- Natural white color
- Cleanroom processed
- Static dissipative properties (ESD rated)
- Double bagged in cleanroom polyethylene bags



NITRILE



Part Number	Size	Packaging	Total/Case
VTGNPFB12-SM	SM	100 ea/bag, 10 bags/cs	1000/case
VTGNPFB12-MD	MD	100 ea/bag, 10 bags/cs	1000/case
VTGNPFB12-LG	LG	100 ea/bag, 10 bags/cs	1000/case
VTGNPFB12-XL	XL	100 ea/bag, 10 bags/cs	1000/case



NITRILE



NITRILE POWDER-FREE CLEANROOM 12" GLOVE

- Disposable and lightweight
- Beaded cuff
- Powder-free
- Natural white color
- Cleanroom processed
- Static dissipative properties (ESD rated)
- Double bagged in cleanroom polyethylene bags
- Ideal for use in critical environments where cleanliness is paramount
- Available in Blue for application differentiation



Part Number	Size	Packaging	Total/Case
VTGNCRB12-XS	XS	100 ea/bag, 10 bags/cs	1000/case
VTGNCRB12-SM	SM	100 ea/bag, 10 bags/cs	1000/case
VTGNCRB12-MD	MD	100 ea/bag, 10 bags/cs	1000/case
VTGNCRB12-LG	LG	100 ea/bag, 10 bags/cs	1000/case
VTGNCRB12-XL	XL	100 ea/bag, 10 bags/cs	1000/case
VTGNCRB12-XX	XX	100 ea/bag, 10 bags/cs	1000/case
VTGNCRB12-XXX	XXX	100 ea/bag, 10 bags/cs	1000/case

NITRILE



NITRILE STERILE CLEANROOM 12" GLOVE

- Disposable and lightweight
- Beaded cuff
- Powder-free
- Natural white color
- Cleanroom processed
- Individually walleated Low-Density Polyethylene (LDPE) pouch for easy donning
- Validated sterile through Cobalt 60 processing
- Ideal for critical applications in aseptic environments



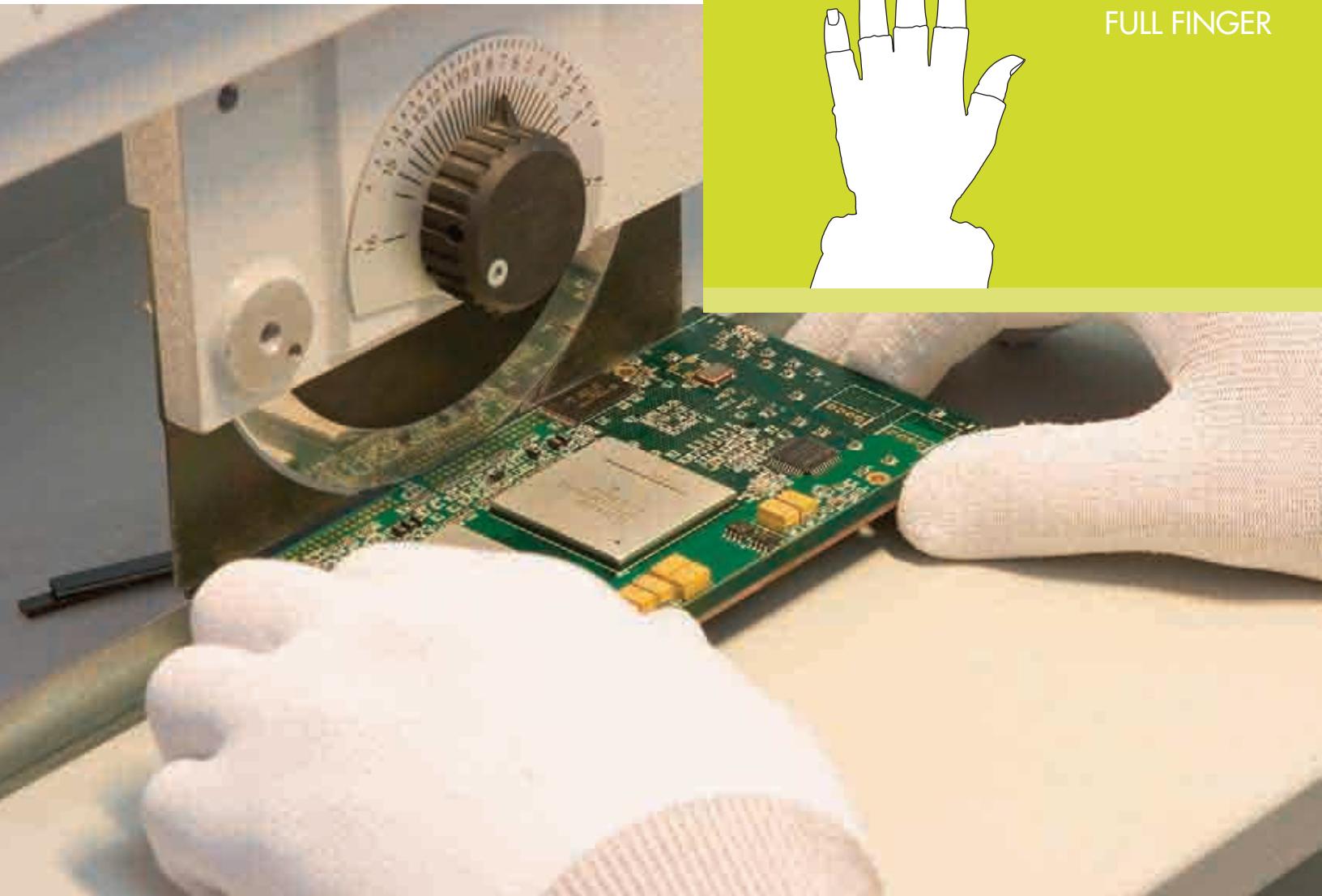
Part Number	Size	Packaging	Total/Case
VTGNCRBIR12-SM	SM	1 pair/pack, 10 pairs/master pack, 20 master packs/cs	200 pairs/case
VTGNCRBIR12-MD	MD	1 pair/pack, 10 pairs/master pack, 20 master packs/cs	200 pairs/case
VTGNCRBIR12-LG	LG	1 pair/pack, 10 pairs/master pack, 20 master packs/cs	200 pairs/case
VTGNCRBIR12-XL	XL	1 pair/pack, 10 pairs/master pack, 20 master packs/cs	200 pairs/case
VTGNCRBIR12-XX	XX	1 pair/pack, 10 pairs/master pack, 20 master packs/cs	200 pairs/case

Gloves Size Chart

	XS	SM	MD	LG	XL	XX	XXX
Men	0	7	7 1/2 - 8	8 1/2 - 9	9 1/2 - 10	10 1/2 - 11	11 1/2 - 12
Women	6	6 1/2	7	7 1/2	8	8 1/2	9

GLOVE LINERS

KEEP OPERATORS HAPPY



HALF FINGER
FULL FINGER

Glove liners, also known as undergloves, make wearing a cleanroom glove more comfortable to the operator.

They can also double as an excellent inspection glove. Valutek liners are constructed of a breathable, 13-gauge, 100% virgin nylon knit, providing a comfortable barrier of air between the operator's skin and glove.

Independent studies have shown that glove liners will:

- Reduce the number of glove changes per day because operators' hands don't get "that sticky feeling."
- Eliminate operator downtime due to skin irritations and dermatitis caused by wearing gloves alone.
- Increase productivity, because happy operators generate greater yields.

Valutek carries one-size-fits-all, ambidextrous liners, eliminating the need to stock different sizes. They are also seamless, giving the operator complete comfort and durability during even the most intensive usage. Our glove liners can be used in all cleanroom environments:



MacroTek_®

Suitable for use in ISO 7+
(Class 10,000+)
environments or higher



MicroTek_®

Suitable for use in ISO 5-6
(Class 100-1,000)
environments



NanoTek_®

Suitable for use in ISO 3-4
(Class 10-10)
environments

Companies that desire a significant improvement in work standards should always keep glove liners in their stockrooms. The moderate cost for this important product will be offset by less gloves used and greater productivity.

NYLON GLOVE LINER

- Lightweight, comfortable, and breathable
- Universal size

Characteristics:

- Non-linting, 100% virgin nylon
- Fine gauge, continuous filament



NYLON



Part Number	Material	Size	Color	Packaging	Total/Case
VTGNLR-1/1	Nylon	Unisize	White	12 pairs/bag, 50 bags/cs	600 pairs/case



NYLON FINGERLESS GLOVE LINER

- Lightweight, comfortable, and breathable
- Universal size
- Preferred over a full glove liner when dexterity is critical

Characteristics:

- Non-linting, 100% virgin nylon
- Fine gauge, continuous filament



NYLON



Part Number	Material	Size	Color	Packaging	Total/Case
VTGNLR-1/2	Nylon	Unisize	White	12 pairs/bag, 20 bags/cs	240 pairs/case



The Green Zone

Glove liners are not only washable and reusable, but they reduce the number of glove changes per day, saving money and valuable natural resources.

DISCOVER THE VALUE OF GREEN WITH VALUTEK



Glove liners are not only comfortable, but they can be laundered and reused. Shown above in full finger version, also available in half finger.



Our mops are among the greenest in the industry. Washable, reusable, and recyclable - reduce contamination in your cleanroom and in our landfills.



We offer a variety of wipes, with our 2-ply wipes being the most environmentally-friendly. Their high sorbency and strength enables you to use them for a longer period of time, and they are recyclable.

Make your cleanroom a "greenroom" with Valutek.
Your innovative solutions provider.

 VALUTEK.com

ADHESIVE MATS

「KEEP A CLEAN PATH
TO YOUR CLEANROOM」



MAT
MAT FRAME

Adhesive mats minimize the amount of contamination that enters a controlled environment by way of shoes, cart wheels, and other sources. You will find these mats at the door to almost every life sciences or electronics manufacturing area.

The three attributes to consider when choosing your adhesive mat needs:

- Tack Level**
This is determined by the force necessary to remove a one inch (25mm) wide strip from a polished stainless steel plate at a constant speed, and usually measured in ounces or grams.
- Adhesive Softness**
If the adhesive is too hard, particles will not transfer from the shoe or wheel to the mat. If it's too soft, adhesive transfer to the shoe or wheel can sometimes occur.
- Adhesive Thickness**
Typical adhesive layers have a thickness between 2-4 millimeters (50-100 microns). If the adhesive layer is too thin, the particles will remain on the surface and shorten the time that the mat can continue to function.

Which mat is right for you?



Gray mat: recommended for use in **ISO 7+** (Class 10,000+) environments or higher. Conceals dirt particles for a more aesthetic work environment.
Recommended sizes: 18x36 and 18x45.



Blue mat: recommended for use in **ISO 5-6** (Class 100-1,000) environments. Provides a good balance between particle visibility and aesthetic qualities.
Recommended sizes: 24x36, 25x45, and 36x36.



White mat: recommended for use in **ISO 3-4** (Class 1-10) environments. The combination of consistent adhesive properties and highest particle visibility make it the perfect solution for the cleanest environments.
Recommended sizes: 36x45, 36x60, and 36x72.



How often should I change my mats?

It depends on your number of operators, number of “passes” (1 person walking across the mat with their left and right foot) in a given time, and environment class. However, one suggestion is to change a mat after 50 passes. The chart below provides an example of recommended changes in a cleanroom with 25 operators.

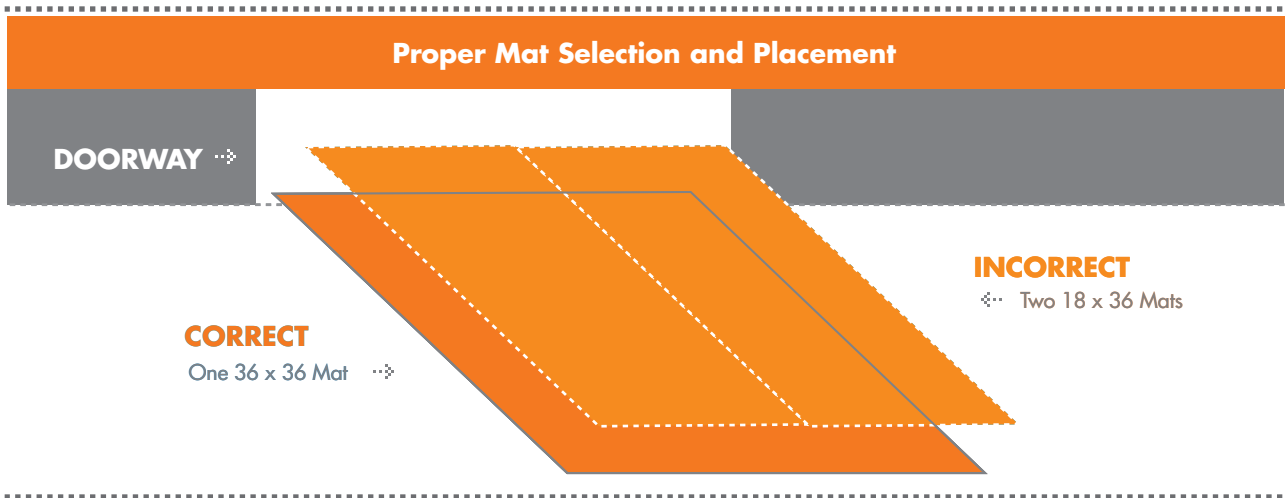
# of operators	# of passes across mat per hour	# of mat changes
25	1	every 2 hours
25	2	every 1 hour
25	4	every 30 minutes

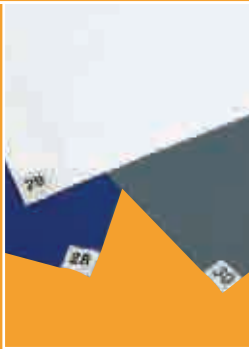
A longer mat will capture more passes than a shorter one, so to reduce changes we recommend using the longest mat your space will allow.



Purchase hint: Avoid “tiling”

If the doorway leading to your cleanroom is 36”, for example, we recommend covering the entire entrance with one 36” wide mat. Avoid the temptation of “tiling” your mats (in this example, stacking two 18” mats side-by-side to create a 36” surface) because particulates can get in-between the mats and pose a contamination risk. Also, when changing sheets, remember to start at the tabbed corner (which should be closest to the doorway) and work your way into the middle, rolling it into a ball as you go.





ADHESIVE MAT

- Film thickness: .05 microns

Peel Adhesion:

- Standard tack 6.5 oz.
- High tack 9.5 oz.

Available quantities:

- 30 layer
- 60 layer

18"x36"

Part Number	Size	Color	Layers	Packaging	Total/Case
VT18364P30L-B	18"x36"	Blue	30	4 mats/case	120 sheets/case
VT18364P30L-W	18"x36"	White	30	4 mats/case	120 sheets/case
VT18364P30L-G	18"x36"	Grey	30	4 mats/case	120 sheets/case
VT18364P60L-B	18"x36"	Blue	60	4 mats/case	240 sheets/case

18"x45"

Part Number	Size	Color	Layers	Packaging	Total/Case
VT18454P30L-B	18"x45"	Blue	30	4 mats/case	120 sheets/case
VT18454P30L-W	18"x45"	White	30	4 mats/case	120 sheets/case
VT18454P30L-G	18"x45"	Grey	30	4 mats/case	120 sheets/case
VT18454P60L-B	18"x45"	Blue	60	4 mats/case	240 sheets/case
VT18454P60L-W	18"x45"	White	60	4 mats/case	240 sheets/case

24"x36"

Part Number	Size	Color	Layers	Packaging	Total/Case
VT24364P30L-B	24"x36"	Blue	30	4 mats/case	120 sheets/case
VT24364P30L-W	24"x36"	White	30	4 mats/case	120 sheets/case
VT24364P30L-G	24"x36"	Grey	30	4 mats/case	120 sheets/case
VT24364P30LHT-W (high-tack version)	24"x36"	White	30	4 mats/case	120 sheets/case
VT24364P60L-B	24"x36"	Blue	60	4 mats/case	240 sheets/case
VT24364P60L-W	24"x36"	White	60	4 mats/case	240 sheets/case
VT24364P30LHT-B (high-tack version)	24"x36"	Blue	30	4 mats/case	120 sheets/case

ADHESIVE MAT (CONTINUED)

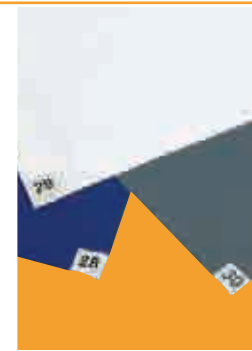
- Film thickness: .05 microns

Peel Adhesion:

- Standard tack 6.5 oz.
- High tack 9.5 oz.

Available quantities:

- 30 layer
- 60 layer



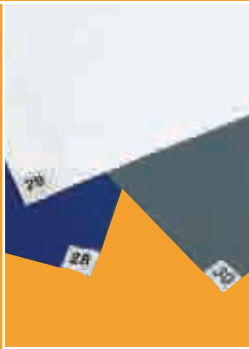
ADHESIVE MATS

26"×45"

Part Number	Size	Color	Layers	Packaging	Total/Case
VT26454P30L-B	26"×45"	Blue	30	4 mats/case	120 sheets/case
VT26454P30L-W	26"×45"	White	30	4 mats/case	120 sheets/case
VT26454P30L-G	26"×45"	Grey	30	4 mats/case	120 sheets/case
VT26454P60L-B	26"×45"	Blue	60	4 mats/case	240 sheets/case
VT26454P60L-W	26"×45"	White	60	4 mats/case	240 sheets/case
VT26454P60L-G	26"×45"	Grey	60	4 mats/case	240 sheets/case
VT26454P60LHT-B (high-tack version)	26"×45"	Blue	60	4 mats/case	240 sheets/case
VT26454P60LHT-W (high-tack version)	26"×45"	White	60	4 mats/case	240 sheets/case
VT26458P60LHT-W (high-tack version)	26"×45"	White	60	8 mats/case	480 sheets/case

36"×36" and 36"×45"

Part Number	Size	Color	Layers	Packaging	Total/Case
VT36364P30L-B	36"×36"	Blue	30	4 mats/case	120 sheets/case
VT36364P30L-W	36"×36"	White	30	4 mats/case	120 sheets/case
VT36364P30L-G	36"×36"	Grey	30	4 mats/case	120 sheets/case
VT36454P30L-B	36"×45"	Blue	30	4 mats/case	120 sheets/case
VT36454P30L-W	36"×45"	White	30	4 mats/case	120 sheets/case
VT36454P30L-G	36"×45"	Grey	30	4 mats/case	120 sheets/case
VT36454P30LHT-W (high-tack version)	36"×45"	White	30	4 mats/case	120 sheets/case
VT36454P60L-B	36"×45"	Blue	60	4 mats/case	240 sheets/case
VT36454P60L-W	36"×45"	White	60	4 mats/case	240 sheets/case



ADHESIVE MAT (CONTINUED)

- Film thickness: .05 microns

Peel Adhesion:

- Standard tack 6.5 oz.
- High tack 9.5 oz.

Available quantities:

- 30 layer
- 60 layer

36"x60" and 36"x72"

Part Number	Size	Color	Layers	Packaging	Total/Case
VT36604P30L-BL	36"x60"	Blue	30	4 mats/case	120 sheets/case
VT36604P30L-W	36"x60"	White	30	4 mats/case	120 sheets/case
VT36604P30L-G	36"x60"	Grey	30	4 mats/case	120 sheets/case
VT36604P30LHT-B (high-tack version)	36"x60"	Blue	30	4 mats/case	120 sheets/case
VT36604P30LHT-W (high-tack version)	36"x60"	White	30	4 mats/case	120 sheets/case
VT36604P30LHT-G (high-tack version)	36"x60"	Grey	30	4 mats/case	120 sheets/case
VT36724P30L-B	36"x72"	Blue	30	4 mats/case	120 sheets/case
VT36724P30L-W	36"x72"	White	30	4 mats/case	120 sheets/case



ADHESIVE MAT FRAME

- Completely complementary to all our adhesive mats
- Eliminates floor maintenance and damage resulting from bare mat usage
- White polystyrene with vinyl anti-skid bottom

Class
4
or higher

Part Number	Size	Description	Packaging
VTFRM-1937	19"x37"	Frame for 18 x 36 Mat	1 frame/case
VTFRM-2047	20"x47"	Frame for 18 x 45 Mat	1 frame/case
VTFRM-2537	25"x37"	Frame for 24 x 36 Mat	1 frame/case
VTFRM-2646	26"x46"	Frame for 26 x 45 Mat	1 frame/case
VTFRM-3737	37"x37"	Frame for 36 x 36 Mat	1 frame/case
VTFRM-3746	37"x46"	Frame for 36 x 45 Mat	1 frame/case
VTFRM-3761	37"x61"	Frame for 36 x 60 Mat	1 frame/case
VTFRM-3773	37"x73"	Frame for 36 x 72 Mat	1 frame/case



Quality Checked

Independent testing shows that Valutek mats offer the most economical and effective particle reducing system against traffic-borne contaminants, removing up to 95% of particles of .30 microns or greater.

CLEANING & MAINTENANCE

「ENSURE YOUR ENVIRONMENT'S CLEAN OPERATION」



Maintaining cleanliness in a controlled environment is a vital but often overlooked requirement for proper cleanroom operation. Floors, walls, work areas, and ceilings are just as important to keep clean as tabletops.

A comprehensive cleanroom maintenance regimen will help ensure your facilities are operating within your specified upper & lower parameters. Valutek mops, adhesive rollers, and spill pillows are designed to maintain a level of cleanliness that meet all cleanroom needs and requirements without generating additional contamination.

Use these icons as your guideline:



MacroTek
ISO 7+



MicroTek
ISO 5-6



NanoTek
ISO 3-4

Which product is right for me?



FLOOR MOPS

Used for cleaning non-raised floors and mats, and are designed to clean large surface areas quickly and efficiently.



FLAT MOPS

Highly effective for removing surface contamination from flat, textured surfaces, such as floors and tables. They are also great at cleaning raised floors. In addition, the 360° pivoting head makes flat mops particularly useful for cleaning vertical surfaces like walls.



T-BAR MOP

A low-profile mop which is versatile enough for general purpose cleaning but especially useful in those hard-to-reach areas.



ADHESIVE ROLLERS

Very effective product for removing particulates on smooth, dry surfaces during unscheduled and non-evasive cleanups.

SPUNLACE NONWOVEN FLOOR MOP HEAD

- Designed for wet mopping of floors
- Edgeless tubular strands with looped ends, sewn in a spaghetti-style design

Characteristics:

- White hydro-entangled, nonwoven 55% cellulose/45% polyester
- Low-linting
- Autoclavable
- Single-use



MOP



Part Number	Size	Weight	Packaging	Total/Case
VTSNTRMOP-6516	6.5"x16"	11 oz	1/bag, 20 bags/cs	20/case



POLYESTER FLOOR MOP HEAD

- Designed for wet mopping of floors
- Carbon filament woven into middle band to dissipate static generated in a normal cleaning process

Characteristics:

- 100% white filament polyester knitted 1/2" strips
- Non-linting
- Autoclavable
- Laundered and double bagged in a Class 5 environment



MOP HEAD



Part Number	Size	Weight	Packaging	Total/Case
VTPNWMOP-716	7"x16"	16 oz	1/bag, 20 bags/cs	20/case



TUBULAR POLYESTER FLOOR MOP HEAD

- Designed for wet mopping of floors
- Extremely low particle and fiber generation during regular mopping activity
- Edgeless tubular strands with looped ends, sewn in a spaghetti-style design
- Heavyweight material for greater sorbency of liquids and particulates
- Microdenier material is more effective at removing contamination than open-cell foam
- Available sterile through Cobalt 60 processing

Characteristics:

- 100% white filament polyester microdenier
- Non-linting
- Autoclavable
- Laundered and double bagged in a Class 4 environment



MOP HEAD



Part Number	Size	Weight	Packaging	Total/Case
VTCRMOP-716	7"x16"	16 oz	1/bag, 20 bags/cs	20/case
STERILE VERSION				
VTCRMOPIR-716	7"x16"	16 oz	1/bag, 20 bags/cs	20/case



MOP HARDWARE



FLOOR MOP HARDWARE

- Mop hardware can be used with all Valutek floor mop heads
- Durable and chemically resistant

Characteristics:

- Electropolished all-welded stainless steel construction
- Autoclavable for sterile environments



Part Number	Description	Size	Packaging
VTCRHNDL-60	Mop Handle, Stainless Steel	60"	1/case
VTCRBKT-08	Single Sided Mop Bucket	8 Gallon, 15 Lbs, 16-20 Ounce, 3" Casters	1/case
VTCRDBKT-08	Double Sided Mop Bucket	8 Gallon, 15 Lbs, 16-20 Ounce, 3" Casters	1/case
VTCRWRGR-00	Wringer, Stainless Steel	212 cu. in, 16-24 oz, 13 Lbs	1/case

MOP HARDWARE



POLYESTER FLAT MOP HEAD

- Designed for wet mopping of floors and walls
- Extremely low particle and fiber generation during regular mopping activity
- No exposed edges
- Flat design slides easily over raised floors or walls
- Edgeless tubular strands with looped ends, sewn in a spaghetti-style design
- Heavyweight material for greater sorbency of liquids and particulates
- Microfiber material more effective at removing contamination than open-cell foam

Characteristics:

- 100% white filament polyester microfiber
- Non-linting
- Autoclavable for sterile environments
- Laundered and double bagged in a Class 4 environment



Part Number	Size	Packaging	Case
VTCRMOPF-4516	4.5" x 16	1 ea/bag, 50 bags/cs	50/case

MOP HARDWARE



POLYESTER FLAT MOP HEAD COVER

- Designed for single-use wet mopping of floors and walls
- Extremely low particle and fiber generation during regular mopping activity
- No exposed edges
- For use with all flat mop brands
- Heavyweight material for greater sorbency of liquids and particulates

Characteristics:

- 100% white filament polyester knitted fabric
- Non-linting
- Autoclavable for sterile environments
- Laundered and double bagged in a Class 4 environment



Part Number	Description	Size	Packaging	Case
VTCRMOPC-516	Polyester Cover	5" x 16"	25 ea / Bag 4 Bags/ cs	100/Case

FLAT MOP HARDWARE

- Mop hardware can be used with Valutek flat mop heads
- 360° rotation meets ergonomic and hygienic needs of critical environments
- Adjustable from 34" to 62" in length
- Durable and chemically resistant

Characteristics:

- Electropolished all-welded stainless steel construction
- Composite and stainless steel handle
- Autoclavable



MOP HARDWARE

Part Number	Description	Size	Packaging
VTCRMOPFRM-SS	Mop head frame, collapsible	1/bag	1/case
VTCRMOPFHNDL-SS	Mop head handle, 34" to 62"	1/bag	1/case
VTCRMOPF-CART2	Mopping cart, double bucket	1/case	1/case

T-BAR MOP HEAD

- Designed for wet mopping of floors, walls, and ceilings
- Combines the cleanliness of polyester with the sorbency of foam
- Low profile gets into hard-to-reach areas
- Extremely low particle and fiber generation during regular mopping activity
- No exposed edges
- Heavy duty snaps (size 6) for durability
- Microfiber material more effective at removing contamination than open-cell foam

Characteristics:

- 2-ply heavy-weight polyester outer layer with reticulated (closed-cell) urethane foam inner layer.
- Non-linting
- Autoclavable
- Laundered and double bagged in a Class 4 environment



MOP HARDWARE

Part Number	Size	Description	Packaging	Total/Case
VTCRMOPT-18	18"	Polyester/Foam Mop head	1/bag, 10 bags/master bag, 5 master bags/case	50/case



T-BAR MOP HARDWARE

- Mop hardware can be used with Valutek T-Bar mop heads
- All-welded, high-grade stainless steel construction is more durable and cleaner than other brands
- High maneuverability meets ergonomic and hygienic needs of critical environments
- Adjustable from 34" to 62" in length
- Lightweight, durable, and chemically resistant

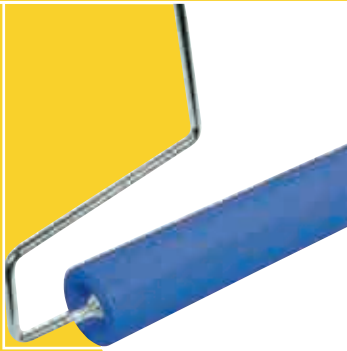
Characteristics:

- Electropolished all-welded stainless steel construction
- Composite and stainless steel handle
- Autoclavable



MOP HARDWARE

Part Number	Description	Size	Packaging
VTCRMOPT18-FRM	Mop head frame	18", 1" diameter	1/case
VTCRMOPT-HNDL	Mop handle	62" to 120"	1/case
VTCRMOPT-W	Mop wringer	18" wide	1/case
VTCRMOPT-DBC	Mop double bucket cart	6 gallon ea, 19" wide	1/case



POLYETHYLENE FILM ADHESIVE ROLLER

- Designed for smooth surfaces: walls, ceilings, floors, and work areas
- Provides a dry alternative to cleanroom mopping
- Adhesive contains bactericide for killing surface bacteria on contact

Characteristics:

- Polyethylene adhesive sheets on a 3" plastic core
- 107 sheets per roller refill, perforated every 14"
- Available in blue or white
- Available in 9" & 18" widths



MicroTek

Class
5
or higher

Part Number	Description	Color	Size	Packaging
VTRLRB-9	Polyethylene	Blue	9"	107 sheets/roll, 8 rolls/cs
VTRLRW-18	Polyethylene	White	18"	107 sheets/roll, 4 rolls/cs



ADHESIVE ROLLER HARDWARE

- Handle can be used with Valutek adhesive rollers
- High maneuverability meets ergonomic and hygienic needs of critical environments
- Lightweight, durable, and chemically resistant

Characteristics:

- Electropolished stainless steel with PTFE components



MicroTek

Part Number	Size	Packaging
VTRLR9-HNDL	9" x 5'	1/case
VTRLR18-HNDL	18" x 5'	1/case



SPILL CONTROL SOCK/PILLOW

- Designed to absorb large spills in critical environments
- Can be used independently or with other Valutek maintenance & cleaning products

Characteristics:

- Laundered 100% continuous filament 85 denier polyester
- 2-Ply double-knit interlock
- No-run circular pattern



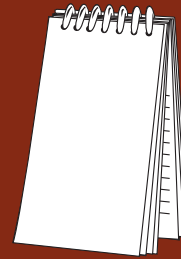
MicroTek

Class
5
or higher

Part Number	Description	Size	Packaging	Total/Case
VTSOCK-0336	Polyester knitted fabric	3" diameter x 36" length	1 Ea/Bag 12 Bags/Case	12/case
VTSOCK-0436	Polyester knitted fabric	4" diameter x 36" length	1 Ea/Bag 12 Bags/Case	12/case
VPILO-1212	Polyester knitted fabric	12" long x 12" wide	1 Ea/Bag 12 Bags/Case	12/case

DOCUMENTATION

「CONTAMINANT-FREE, ARCHIVE-SAFE」



NOTEPADS
NOTEBOOKS
PAPER



All paper is not created equal. A cleanroom environment requires a specialized paper that won't introduce any contamination like particulates or fillers. At the same time, this same paper needs to work with all standard office equipment like high-speed laser copiers/printers. It also requires the ability to be archived for indefinite periods of time.

The three attributes to consider when choosing your paper needs:

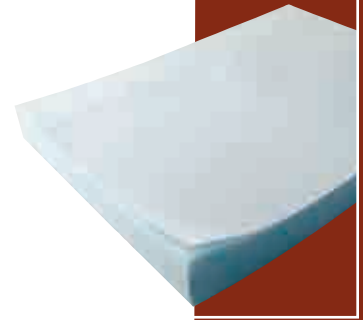
- **Base substrate**
What is the paper made of?
Many lower-quality papers contain ash fillers, which means they will introduce particulates when torn or folded. Valutek's papers are of higher quality and 100% filler-free.
- **Uniformity**
Paper goes through a stringent collandering process which reduces the size of the fibers, forms them into a page, and provides additional stability and uniform flatness. High-quality paper receives more collandering than standard paper, and has greater success passing through high-speed laser copiers and printers.
- **Coating**
Cleanroom paper should be impregnated with a synthetic coating. Beware of low-cost options, which contain lower-quality latex and resin treatments.

STICKY NOTEPAD

- Residue-free adhesive backing
- Sealed in poly bags for maximum cleanliness

Characteristics:

- Synthetic polymer impregnated paper
- Size: 3"x4"
- Weight: 23 lb.
- Color: blue



NOTEPAD



NanoTek.

Part Number	Size	Packaging	Total/Case
VTNPCR-34	3" x 4"	100 sheets/pad, 5 pads/bag, 10 bags/cs	5000 sheets/case



COLLEGE RULE SPIRAL-BOUND NOTEBOOKS

- Excellent ink absorption
- Polyethylene cover can be written on
- Sealed in poly bags for maximum cleanliness
- Available ESD safe, see ESD section

Characteristics:

- Synthetic polymer impregnated paper
- Semitransparent HD polyethylene cover
- Weight: 30 lb.
- Color: white
- Sizes: letter (8.5" x 11"), steno (5.5" x 8.5"), index card (3" x 5")



NOTEBOOK



NanoTek.

Part Number	Size	Style	Packaging	Total/Case
VTNBCR-35	3" x 5"	100 Pages Top Spiral-Bound	1 ea/bag, 300 bags/case	300/case
VTNBCR-5585	5.5" x 8.5"	100 Pages Side Spiral-Bound	1 ea/bag, 100 bags/case	100/case
VTNBCR-8511	8.5" x 11"	100 Pages Side Spiral-Bound	1 ea/bag, 50 bags/case	50/case



CLEANROOM PAPER, 23 LB. LETTER SIZE

- Improved uniformity for use with laser printers and copy machines
- Excellent ink absorption
- Reams are sealed in poly bags for maximum cleanliness

Characteristics:

- Synthetic polymer impregnated paper
- Weight: 23 lb.
- Colors: Blue, Dark Blue, Green, Orange, Pink, White, Yellow
- Size: letter (8.5" x 11")



PAPER



NanoTek.

Part Number	Size	Color	Weight	Packaging	Total/Case
VTCRPS23B-8511	8.5" x 11"	Blue	23 lbs	250 sheets/ream 10 reams/case	2500 sheets/case
VTCRPS23DB-8511	8.5" x 11"	Dark Blue	23 lbs	250 sheets/ream 10 reams/case	2500 sheets/case
VTCRPS23G-8511	8.5" x 11"	Green	23 lbs	250 sheets/ream 10 reams/case	2500 sheets/case
VTCRPS23O-8511	8.5" x 11"	Orange	23 lbs	250 sheets/ream 10 reams/case	2500 sheets/case
VTCRPS23P-8511	8.5" x 11"	Pink	23 lbs	250 sheets/ream 10 reams/case	2500 sheets/case
VTCRPS23W-8511	8.5" x 11"	White	23 lbs	250 sheets/ream 10 reams/case	2500 sheets/case
VTCRPS23Y-8511	8.5" x 11"	Yellow	23 lbs	250 sheets/ream 10 reams/case	2500 sheets/case





CLEANROOM PAPER, 30 LB. LETTER & TABLOID SIZE

- Ideal 2-sided printing
- Improved uniformity for use with laser printers and copy machines
- Excellent ink absorption
- Reams are sealed in poly bags for maximum cleanliness

Characteristics:

- Synthetic polymer impregnated paper
- Weight: 30 lb.
- Colors: Blue, White
- Sizes: letter (8.5" x 11"), tabloid (11" x 17")



Class
4
or higher

Part Number	Size	Color	Weight	Packaging	Total/Case
VTCRPS30W-8511	8.5" x 11"	White	30 lbs	250 sheets/ream 10 reams/case	2500 sheets/case
VTCRPS30B-1117	11" x 17"	Blue	30 lbs	250 sheets/ream 5 reams/case	1250 sheets/case
VTCRPS30W-1117	11" x 17"	White	30 lbs	250 sheets/ream 5 reams/case	1250 sheets/case
VTCRPS30B-2436	24" x 36"	Yellow	30 lbs	250 sheets/case	250 sheets/case



CLEANROOM NOTEBOOK FILLER PAPER, 3-HOLE LETTER SIZE

- Improved uniformity for use with laser printers and copy machines
- Excellent ink absorption
- Reams are sealed in poly bags for maximum cleanliness

Characteristics:

- Synthetic polymer impregnated paper
- Weight: 23 lb.
- Colors: Blue
- Size: letter (8.5" x 11")



Class
4
or higher

Part Number	Size	Color	Weight	Packaging	Total/Case
VTCRPS23B-8511P	8.5" x 11"	Blue	23 lbs	250 sheets/ream 10 reams/case	2500 wipes/case



CLEANROOM PAPER, CONTINUOUS FORM

- Improved uniformity for use with dot matrix printers
- Excellent ink absorption
- Cases are sealed in poly bags for maximum cleanliness

Characteristics:

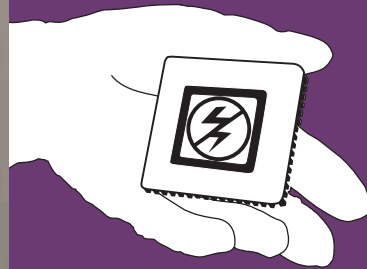
- Synthetic polymer impregnated paper
- Weight: 23 lb.
- Colors: Blue
- Size: 9.5" x 11"



Class
4
or higher

Part Number	Size	Color	Weight	Packaging
VTCRPS23B-9511	9.5" X 11"	Blue	23 lbs	1500 sheets/case

PREVENT DISCHARGE, PROTECT YOUR PRODUCTS



FINGERCOTS
GLOVES
GROUNDERS
SHOECOVERS
WIPERS



The “other” type of contamination.

Electrostatic Discharge (ESD) prevention is a serious issue in electronics, aerospace, and semiconductor industries. Invisible and undetectable, it can be more harmful than particulate contamination on a microchip. Even though sub-micron particles inside a cleanroom are invisible to the naked eye, they can cause significant damage and result in failure. The best defense against this ongoing threat is proper grounding in conjunction with quality contamination control techniques.

The best way to protect sensitive electronics is to ensure all operators are grounded, and to wear the appropriate gear that eliminates or dissipates static build-up. Valutek has a variety of products specially designed to meet your ESD requirements.

Look for these symbols to match the product with your cleanroom needs:



Suitable for use in ISO 7+
(Class 100,000+) environments or higher



Suitable for use in ISO 5-6
(Class 1,000-10,000) environments



Suitable for use in ISO 3-4
(Class 10-100) environments



Did you know?

Both PVC and nitrile gloves have static dissipating properties, and can further reduce risk of electrostatic discharge.

NITRILE ANTISTATIC FINGER COT

- Powder-free
- Rolled
- Static dissipative properties (ESD rated)
- Ideal for electronics assembly and medical device manufacturing

Characteristics:

- Length: 2.75"
- Thickness: 3 millimeters



FINGERCOT



Part Number	Size	Packaging	Total/Case
VTCNRPF-SM	SM	5 gross/bag, 40 bags/cs	28,800/case
VTCNRPF-MD	MD	5 gross/bag, 40 bags/cs	28,800/case
VTCNRPF-LG	LG	5 gross/bag, 40 bags/cs	28,800/case
VTCNRPF-XL	XL	5 gross/bag, 40 bags/cs	28,800/case



LATEX ANTISTATIC FINGER COT, PINK

- Powder-free
- Rolled
- Static dissipative properties (ESD rated)
- Ideal for electronics assembly applications

Characteristics:

- Length: 2.75"
- Thickness: 3 millimeters



FINGERCOT



Part Number	Size	Packaging	Total/Case
VTCLASPF-SM	SM	5 gross/bag, 40 bags/cs	28,800/case
VTCLASPF-MD	MD	5 gross/bag, 40 bags/cs	28,800/case
VTCLASPF-LG	LG	5 gross/bag, 40 bags/cs	28,800/case
VTCLASPF-XL	XL	5 gross/bag, 40 bags/cs	28,800/case



LATEX FINGER COT, NATURAL

- Powder-free
- Rolled
- Ideal for general use

Characteristics:

- Length: 2.75"
- Thickness: 3 millimeters



FINGERCOT



Part Number	Size	Packaging	Total/Case
VTCLPF-SM	SM	5 gross/bag, 40 bags/cs	28,800/case
VTCLPF-MD	MD	5 gross/bag, 40 bags/cs	28,800/case
VTCLPF-LG	LG	5 gross/bag, 40 bags/cs	28,800/case
VTCLPF-XL	XL	5 gross/bag, 40 bags/cs	28,800/case



FINGERCOT



LATEX CONDUCTIVE FINGER COT, BLACK

- Powder-free
- Rolled
- Static dissipative properties (ESD rated)

Characteristics:

- Length: 2.75"
- Thickness: 3 millimeters



Class
5
or higher



Part Number	Size	Packaging	Total/Case
VTCLCONPF-SM	SM	5 gross/bag, 40 bags/cs	28,800/case
VTCLCONPF-MD	MD	5 gross/bag, 40 bags/cs	28,800/case
VTCLCONPF-LG	LG	5 gross/bag, 40 bags/cs	28,800/case
VTCLCONPF-XL	XL	5 gross/bag, 40 bags/cs	28,800/case

GLOVE



PVC POWDER-FREE CLEANROOM 12" GLOVE

- Disposable and lightweight
- Beaded cuff
- Cleanroom processed
- Chemically pure
- Powder-free
- Exceeds ESD performance of MIL-STD-1686
- Electrostatic dissipative with low ionic extractables
- Laundered and packaged in a critical environment
- Double bagged for maximum cleanliness
- Ideal for use in critical environments where cleanliness is paramount



Class
4
or higher

Latex
Free



Part Number	Size	Packaging	Total/Case
VTGVCRB12-SM	SM	100 Ea/Bag 10 Bags/Case	1000/case
VTGVCRB12-MD	MD	100 Ea/Bag 10 Bags/Case	1000/case
VTGVCRB12-LG	LG	100 Ea/Bag 10 Bags/Case	1000/case
VTGVCRB12-XL	XL	100 Ea/Bag 10 Bags/Case	1000/case

NITRILE



NITRILE POWDERED 9.5" GLOVE

- Disposable and lightweight
- Beaded cuff
- Lightly powdered
- Natural white color
- Static dissipative properties (ESD rated)
- Packaged in a carton glove box for easy dispensing
- Excellent general purpose glove for non-critical environments



Suitable for

INDUSTRIAL
LABS
CONTROLLED
ENVIRONMENTS

Textured
Grip

Latex
Free



Part Number	Size	Packaging	Total/Case
VTGNPX95-SM	SM	100 ea/box, 10 boxes/cs	1000/case
VTGNPX95-MD	MD	100 ea/box, 10 boxes/cs	1000/case
VTGNPX95-LG	LG	100 ea/box, 10 boxes/cs	1000/case
VTGNPX95-XL	XL	100 ea/box, 10 boxes/cs	1000/case

NITRILE POWDER-FREE 9.5" GLOVE

- Disposable and lightweight
- Beaded cuff
- Powder-free
- Natural white color
- Chlorinated
- Static dissipative properties (ESD rated)
- Packaged in a carton glove box for easy dispensing
- Excellent general purpose glove for non-critical environments



NITRILE

Part Number	Size	Packaging	Total/Case
VTGNPFX95-SM	SM	100 ea/box, 10 boxes/cs	1000/case
VTGNPFX95-MD	MD	100 ea/box, 10 boxes/cs	1000/case
VTGNPFX95-LG	LG	100 ea/box, 10 boxes/cs	1000/case
VTGNPFX95-XL	XL	100 ea/box, 10 boxes/cs	1000/case



NITRILE POWDER-FREE 9.5" CONTROLLED ENVIRONMENT GLOVE

- Disposable and lightweight
- Beaded cuff
- Powder-free
- Natural white color
- Chlorinated
- Static dissipative properties (ESD rated)
- Bagged and vacuum sealed for cleanliness



NITRILE

Part Number	Size	Packaging	Total/Case
VTGNPFB95-SM	SM	100 ea/bag, 10 bags/cs	1000/case
VTGNPFB95-MD	MD	100 ea/bag, 10 bags/cs	1000/case
VTGNPFB95-LG	LG	100 ea/bag, 10 bags/cs	1000/case
VTGNPFB95-XL	XL	100 ea/bag, 10 bags/cs	1000/case



NITRILE POWDER-FREE 12" CONTROLLED ENVIRONMENT GLOVE

- Disposable and lightweight
- Beaded cuff
- Powder-free
- Natural white color
- Cleanroom processed
- Static dissipative properties (ESD rated)
- Double bagged in cleanroom polyethylene bags



NITRILE

Part Number	Size	Packaging	Total/Case
VTGNPFB12-SM	SM	100 ea/bag, 10 bags/cs	1000/case
VTGNPFB12-MD	MD	100 ea/bag, 10 bags/cs	1000/case
VTGNPFB12-LG	LG	100 ea/bag, 10 bags/cs	1000/case
VTGNPFB12-XL	XL	100 ea/bag, 10 bags/cs	1000/case



GLOVE



NITRILE POWDER-FREE CLEANROOM 12" GLOVE

- Disposable and lightweight
- Beaded cuff
- Powder-free
- Natural white color
- Cleanroom processed
- Static dissipative properties (ESD rated)
- Double bagged in cleanroom polyethylene bags
- Ideal for use in critical environments where cleanliness is paramount
- Available in Blue for application differentiation



Part Number	Size	Packaging	Total/Case
VTGNCRB12-XS	XS	100 Ea/Bag, 10 Bags/Case	1000/case
VTGNCRB12-SM	SM	100 Ea/Bag, 10 Bags/Case	1000/case
VTGNCRB12-MD	MD	100 Ea/Bag, 10 Bags/Case	1000/case
VTGNCRB12-LG	LG	100 Ea/Bag, 10 Bags/Case	1000/case
VTGNCRB12-XL	XL	100 Ea/Bag, 10 Bags/Case	1000/case
VTGNCRB12-XX	XX	100 Ea/Bag, 10 Bags/Case	1000/case
VTGNCRB12-XXX	XXX	100 Ea/Bag, 10 Bags/Case	1000/case

GLOVE



CONDUCTIVE KNIT GLOVE

- Comfortable and durable
- Moisture-wicking construction
- Conductivity guaranteed up to 50 washing cycles (without bleach)
- Cuffs are color coded by size for easy inventory and stock management

Characteristics:

- 13-gauge Polyester and silver composite fiber offering superior conductivity
- Resistance: 10x4
- Current Drop: 1 ohm from finger to wrist



Part Number	Size	Cuff Color	Packaging	Total/Case
VTGCONKT-SM	SM	Blue	12 Pair/Bag, 10 Bags/Case	120/case
VTGCONKT-MD	MD	White	12 Pair/Bag, 10 Bags/Case	120/case
VTGCONKT-LG	LG	Red	12 Pair/Bag, 10 Bags/Case	120/case

WRISTBAND



FABRIC ADJUSTABLE WRISTBAND AND CORD SET

- 360° contact around the entire wrist ensures maximum grounding
- Polyurethane coil insulation offers excellent coil memory
- Soft blue woven fabric is breathable, comfortable, and hypoallergenic
- Available in either 6- or 12-foot cord lengths

Characteristics:

- Material: Silver-Plated Nylon Thread
- Resistance: 100 ohms normal, 160 ohms maximum
- Snap: 4mm
- Snap release pressure: 1-5 pounds
- Stainless Steel Back Plate



Part Number	Length	Packaging	Total/Case
VTWS-6	6 feet	1 Ea/Bag, 50 Bags/Pack 5 Packs/Case	250/Case
VTWS-12	12 feet	1 Ea/Bag, 50 Bags/Pack 5 Packs/Case	250/Case

FABRIC ADJUSTABLE HEEL GROUNDING

- Designed for operators that move from station to station
- Properly grounds operators when used with the correct flooring source
- Worn on both feet to ensure consistent grounding
- Available in either buckle or Velcro® closures

Characteristics:

- Durable molded resistor, 35mm cup design
- Resistance: 1 megohm molded resistor (+/- 5%)



HEEL GROUNDING

Part Number	Size	Style	Packaging	Total/Case
VTHG-21S	SM	Buckle	1 Ea/Bag, 50 Bags/Pack, 5 Packs/Case	250/Case
VTHG-21	LG	Buckle	1 Ea/Bag, 50 Bags/Pack, 5 Packs/Case	250/Case
VTHGV-21	LG	Velcro	1 Ea/Bag, 50 Bags/Pack, 5 Packs/Case	250/Case



ANTI-SKID POLYPROPYLENE ESD SHOE COVER

- Disposable and lightweight
- Elastic ankle cuffs
- Conductive knit, sole-stitched 20" ESD ribbon provides static dissipation

Characteristics:

- Non-marring, non-woven polypropylene with stitched seams
- Sprayed latex anti-skid safety treads



SHOECOVER

Part Number	Size	Style	Packaging	Total/Case
VTSHCVAESDF-LG	LG 16"	Standard Ribbon	100 ea/Bag, 3 Bags/case	300/Case
VTSHCVAESDF-XL	XL 18"	Standard Ribbon	100 ea/Bag, 3 Bags/case	300/Case
VTSHCVAESDLF-L	LG 16"	Long Ribbon	100 ea/Bag, 3 Bags/case	300/Case
VTSHCVAESDLF-X	XL 18"	Long Ribbon	100 ea/Bag, 3 Bags/case	300/Case
VTSHCVCESDLF-XL	XL 18"	Coated Polypropylene	Long Ribbon, 100ea/Bag, 3 Bags/case	300/Case



ESD POLYESTER WIPER, LAUNDERED AND SELVAGE EDGED

- Strong, clean, and absorbent
- Contains conductive carbon fiber designed to dissipate electrical charge
- Electrostatic Discharge Properties: surface resistivity 4.5×10^7
- Static decay time less than 1.3 seconds

Characteristics:

- 100% continuous filament polyester
- No-run circular pattern
- Lint-free
- Selvage edge



WIPER

Part Number	Size	Packaging	Total/Case
VTPNWESD-99	9x9	150 Ea/Bag, 8 Bags/Case	1200/Case





VALUSAT™ PRE-SATURATED LASER SEALED EDGE POLYESTER WIPER IN ESD POUCH

- Durable and soft
- Saturated in semiconductor grade solution, filtered to 0.2 µm
- Laser sealed edge provides superior protection against particulate contamination
- Laundered and packaged in a controlled environment
- Packaged in a resealable static shield bag for ESD sensitive environments
- Ideal for critical wiping applications where static control is paramount

Characteristics:

- 100% continuous filament polyester
- Solution of 70% isopropyl alcohol, 30% deionized 18 mega ohm water



Part Number	Size	Solution Mix	Wipe	Packaging	Total/Case
VTPNWSI06-99F	9x9	6% IPA, 94% DI H2O (333 ml)	Laser Edge Laundered Polyester	50 ea/bag 10 bags/case	500 wipes/ case
VTPNWSI70-99F	9x9	70% IPA, 30% DI H2O (335 ml)	Laser Edge Laundered Polyester	50 ea/bag 10 bags/case	500 wipes/ case



COLLEGE RULE SPIRAL-BOUND NOTEBOOKS

- Excellent ink absorption
- Polyethylene cover can be written on
- Sealed in poly bags for maximum cleanliness
- ESD safe

Characteristics:

- Synthetic polymer impregnated paper
- Semitransparent HD polyethylene cover
- Weight: 30 lb.
- Color: white
- Sizes: letter (8.5" x 11"), steno (5.5" x 8.5"), index card (3" x 5")



Part Number	Size	Style	Packaging	Total/Case
VTNBCRE-35	3" x 5"	100 Pages Top Spiral-Bound	1 ea/bag, 300 bags/case	300/case
VTNBCRE-5585	5.5" x 8.5"	100 Pages Side Spiral-Bound	1 ea/bag, 100 bags/case	100/case
VTNBCRE-8511	8.5" x 11"	100 Pages Side Spiral-Bound	1 ea/bag, 50 bags/case	50/case



Join GSFCC

Global Society for Contamination Control (www.GSFCC.org) is a 501 c (6) non-profit focused on the advancement of the contamination control industry by fostering knowledge exchange and collaboration between cleanroom operators and managers from around the world. By utilizing innovative "community building technologies" GSFCC provides peer-to-peer documentation sharing to help improve Cleanroom industry best practices. Through its sponsorship of www.Cleanroomforum.com, GSFCC provides a real-time environment to pose / answer technical inquiries indexed by discipline.



1 New Logo, New Spelling

We're rolling out the red carpet for 2008 with a new, modern look, a cleaner company name, and even better products and services.

2 Easier navigation

Full-featured rollover menus will make finding the products and information you need easier than ever.

3 Animated box

View the latest product information, promotions, and news.

4 Customer Login

New and improved system enables you to track and place orders, view and pay your statements, and check product availability.

5 Live On-Line Chat

Contact our global support team live 24 hours a day, 5 days a week.

6 Better Search Results

Find what you need faster and easier with our improved search engine utilizing Google™ search technology.

7 New Product Categorizations

We've categorized and improved our products to better match your cleanroom and controlled environment needs.

8 'Popular Search' feature

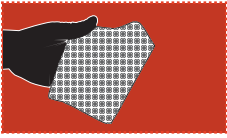
Takes you right to the most popular pages with one-click convenience.

9 Order Now

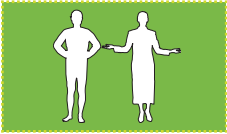
Know what you want? Now you can order it right from the home page and check out in one click.

10 Services & Support

Find industry forums, Cleanroom Wikipedia, and information on how to become a Valutek reseller.



WIPERS	5 – 22
Nonwoven wipers	8 – 10
Stencil roll wipers	9
Knit wipers	10 – 15
Sterile wipers	15 – 17
Pre-saturated wipers	18 – 22



APPAREL	23 – 34
Bouffant caps	25
Beard covers	25
Facemasks	25 – 26
Face veils	26
Headwear	27
Labcoats	27 – 28
Coveralls	29 – 30
Sleeves	30 – 31
Shoe covers	31 – 34
Boot covers	34



GLOVES	35 – 42
PVC gloves	38
Latex gloves	39 – 41
Nitrile gloves	40 – 42



GLOVE LINERS 43 – 46

Nylon glove liners 45



ADHESIVE MATS. 47 – 52

Adhesive mats 50 – 51

Adhesive mat frames 52



CLEANING AND MAINTENANCE 53 – 58

Mop and Mop heads 55

Mop hardware 56 – 57

Adhesive rollers and hardware 58

Spill control 58



DOCUMENTATION 59 – 62

Note pads, notebooks and paper ... 61 – 62



ESD 63 – 70

Fingercots 65 – 66

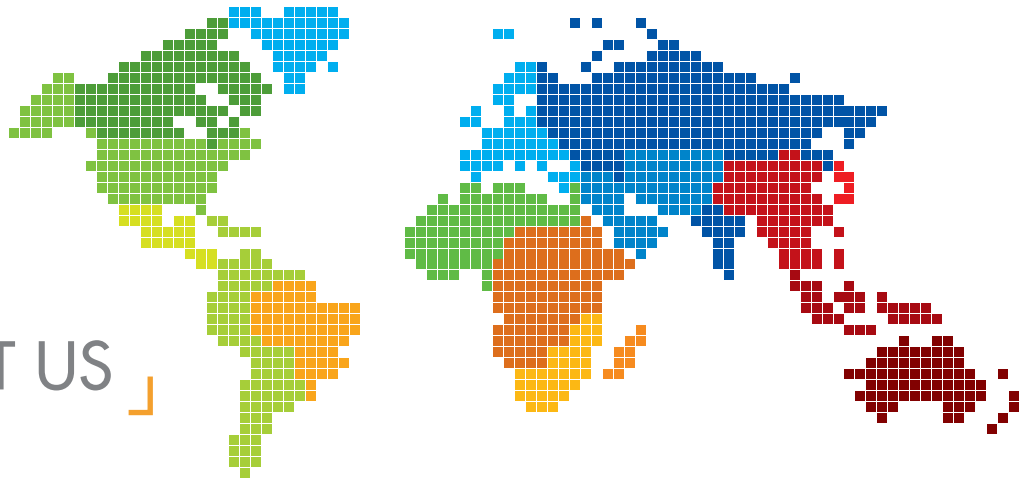
Powder free gloves 66 – 68

Wristbands 68

Heel grounders and shoe covers..... 69

Wipers 69 – 70

Notebooks 70



CONTACT US

■ **USA/Canada**
Valutek

1005 N. 50th St.
Phoenix, AZ 85008

T: 602-256-0540
F: 602-252-1972
E: info@valutek.com

■ **Latin America**
Valutek Latin America
S.A. de C.V.

Avenida de la Raza
#5385 Loc. 205
Col. Los Nogales Chihuahua
Cd. Juarez, Chihuahua 3235

T: 55-5351-5422
E: latam@valutek.com

■ **Asia**
Valutek Asia Sdn. Bhd.

5029 Jalan Raja Uda
12300 Butterworth,
Pulau Pinang, Malaysia

T: 604-3106111/113/110
F: 604-310-6112
E: asia@valutek.com

