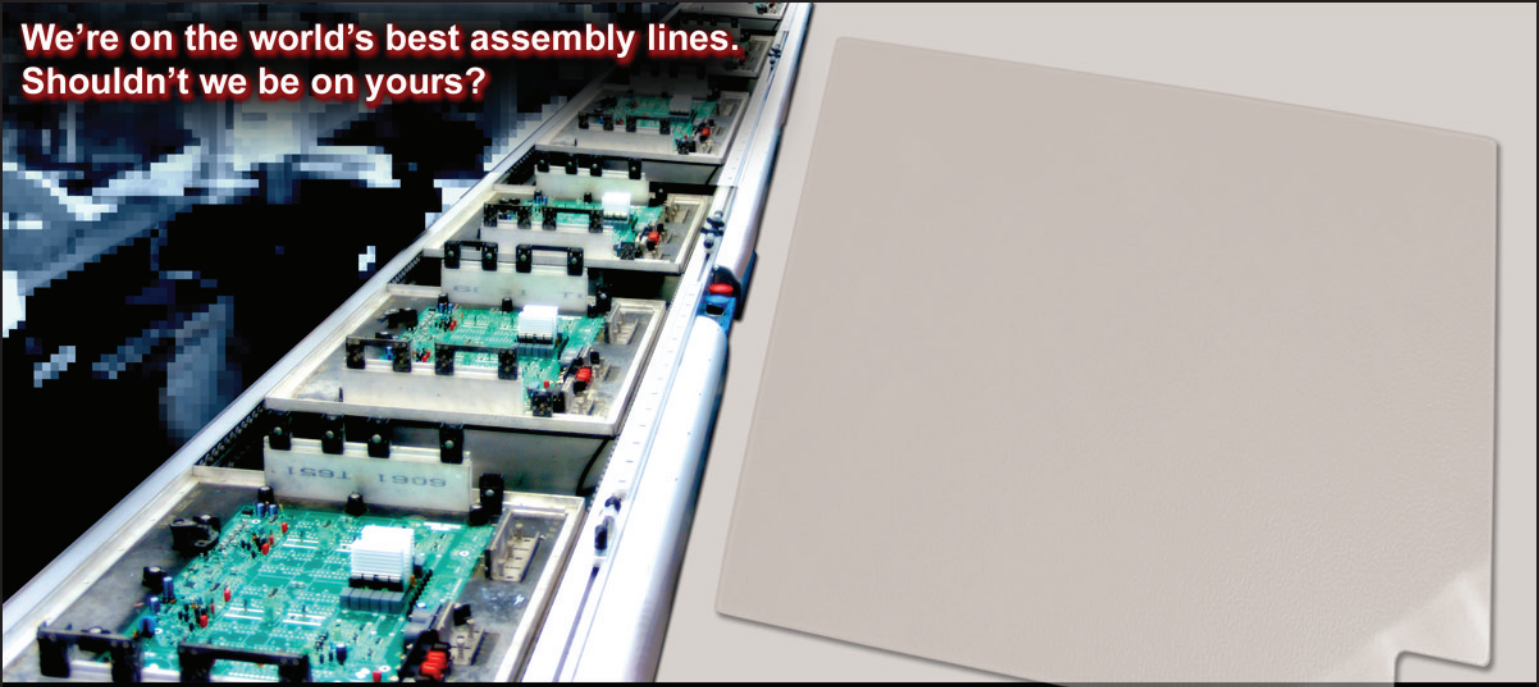


**We're on the world's best assembly lines.
Shouldn't we be on yours?**

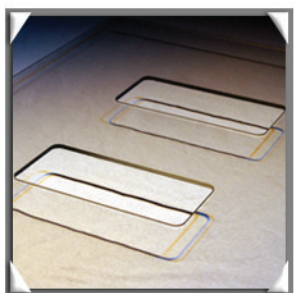
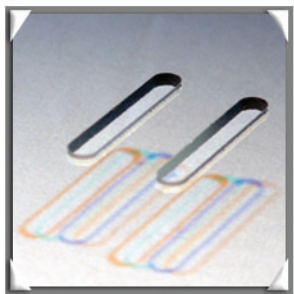
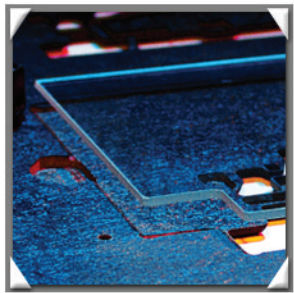


Wave Glass

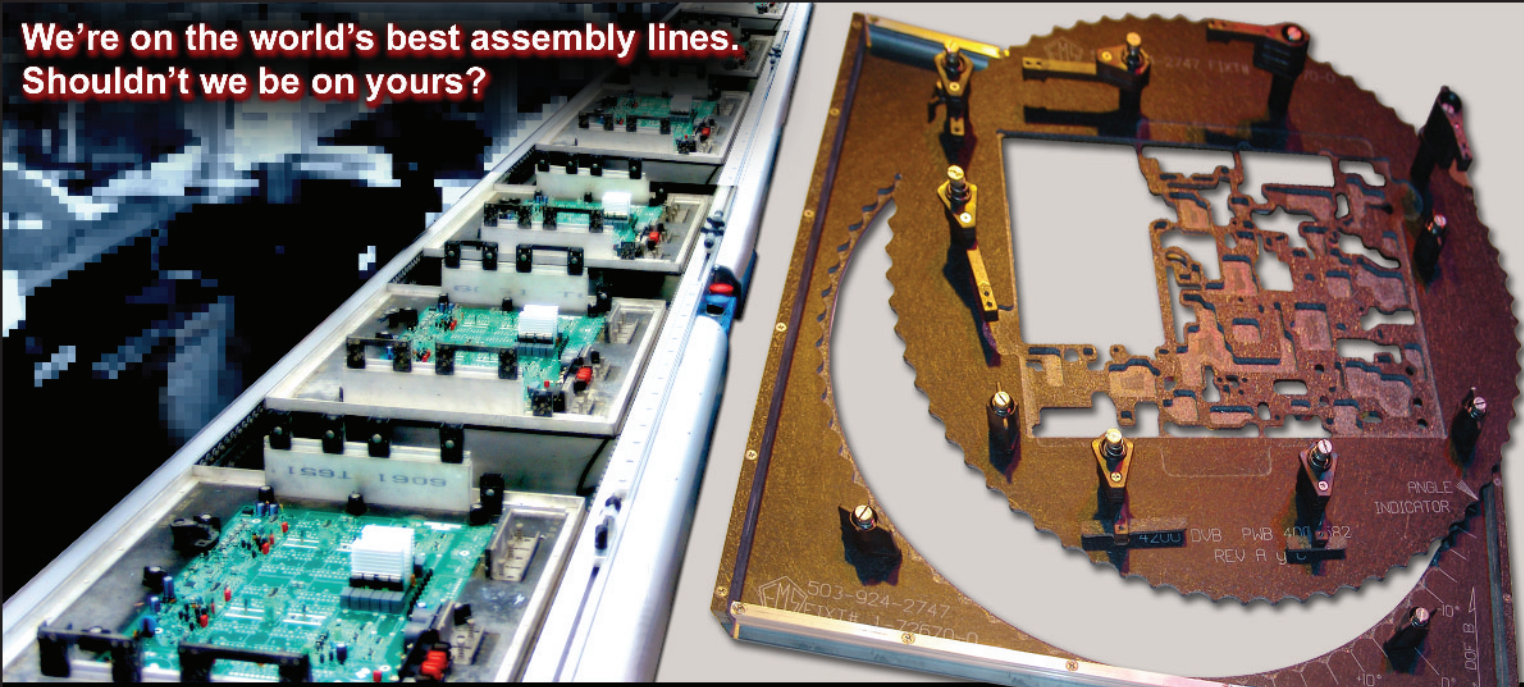
See how your fixture is going to perform and make all the necessary setup adjustments to your wave solder operation before loading a single board! You don't need to fly blind.

Pentagon EMS Wave Glass is cut to the exact shape of the perimeter of the circuit board, and fits into the PCB pocket of the fixture. This allows you to see exactly how the solder is flowing in each exposed area of the fixture and adjust your settings according to what you see. Wave Glass is an invaluable tool to aid in reducing the risk of insufficient solder and board flooding.

- Provides a visible means to see how solder flows in each exposed area of the fixture and make adjustments
- Cut to the perimeter shape of the PCB
- Can be cut to allow for internal fixture features also
- Aids in reducing the risk of insufficient solder and board flooding
- 1/8" thick, withstands high temperatures required in the wave solder process
- Usability Guarantee



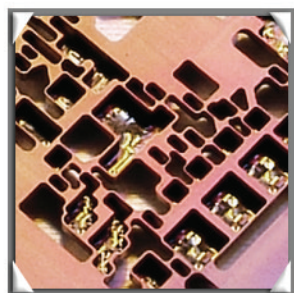
We're on the world's best assembly lines.
Shouldn't we be on yours?



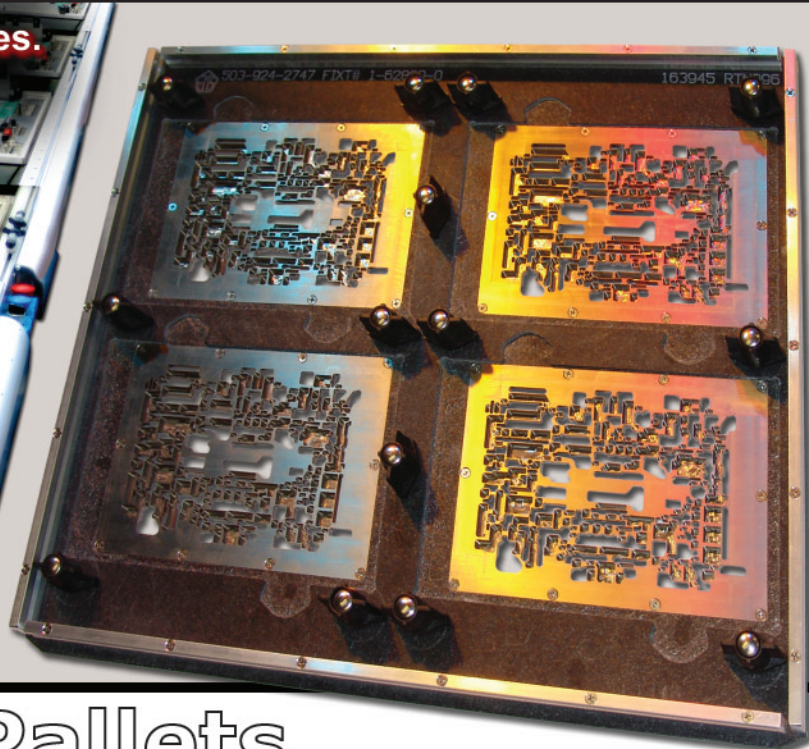
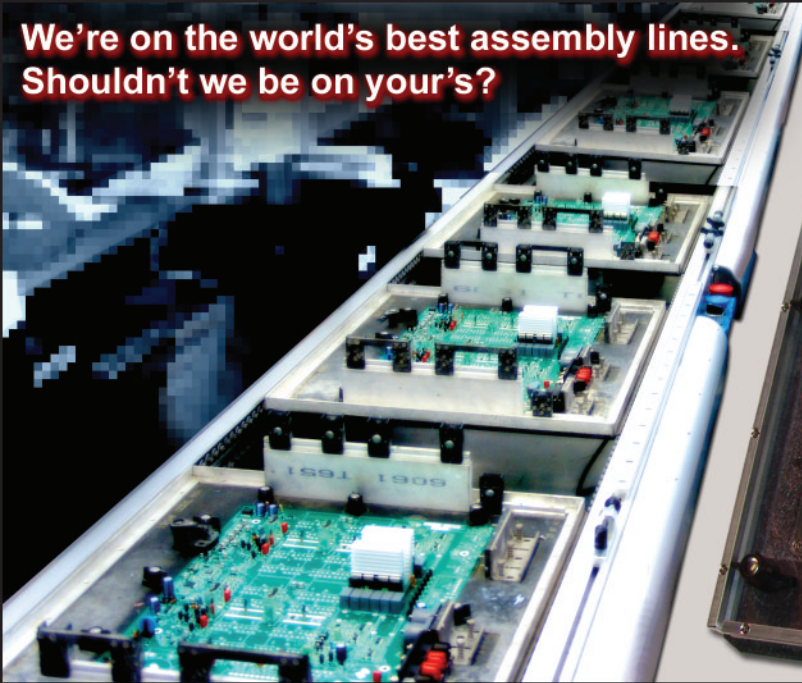
Rotating Wave Solder Pallets

Eliminate bridges and skips, **reduce** rework and **increase** and **optimize** wave solder process reliability using Rotating Wave Solder Pallets from Pentagon EMS. Pentagon's Rotating Wave Solder Pallets allow you to **eliminate the guesswork** by **testing to determine the best angle** of PCB presentation to the wave **before** purchasing dedicated tooling.

- Reduce or eliminate bridging and skipping
- Angle of rotation adjustable in 5 degree increments
- Same pallet base can host any number of board designs by just ordering a new rotating plate
- Wave Pockets and Solder Channels promote better solder flow
- Same ergonomic PCB and component holdowns
- Anodize option on stiffener bars to indicate the type of wave solder process (ie. organic, no clean, lead free)
- Optional Titanium Edge Steps add extra durability to the fixture
- Optional Titanium Inserts for extremely thin wall areas
- Unlimited custom options
- Usability Guarantee



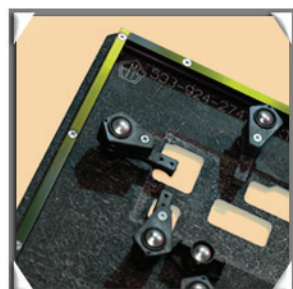
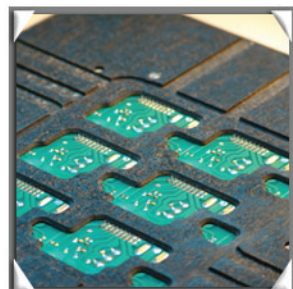
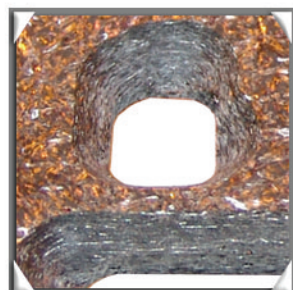
We're on the world's best assembly lines.
Shouldn't we be on your's?



Wave Solder Pallets

Reduce cycle times, **eliminate** hand-masking, **increase** throughput and **optimize** your wave solder process with Wave Solder Pallets from Pentagon EMS. Pentagon pallets support the PCB and mask goldfingers, open routings, plated tooling holes, solder-side SMT components, and other critical board features from the wave, while allowing the through-hole leads to be wave soldered.

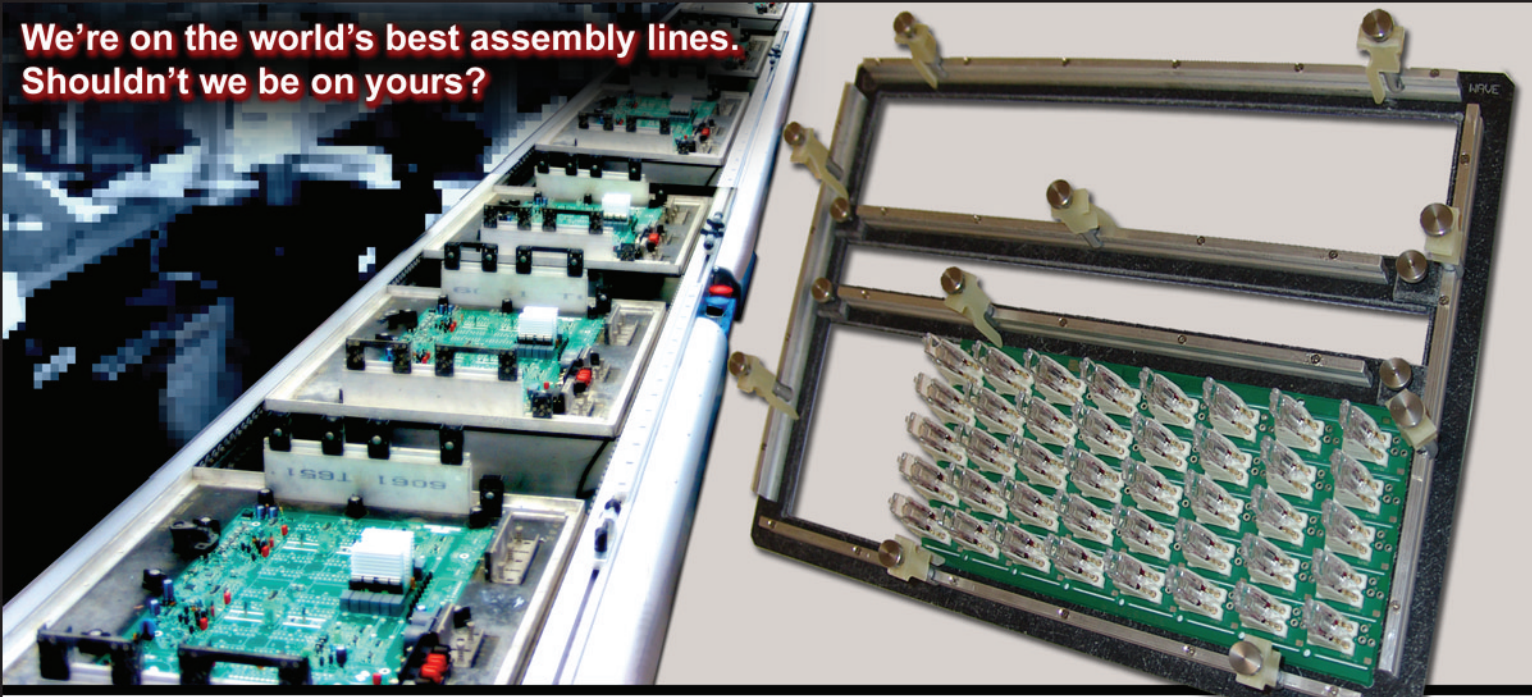
- Pallets permit wave solder processing of through-hole components while masking solder-side SMT components and critical board features from molten solder
- Maximum possible "Knife Edge" beveling of fixture openings, provide the best possible solder flow to component leads
- Wave Pockets and Solder Channels promote better solder flow
- Ergonomic PCB and component holddowns
- FREE! PCB pocket covers provided with multi-up fixtures
- Anodize option on stiffener bars to indicate the type of wave solder process (ie. organic, no clean, lead free)
- Optional Titanium Edge Steps add extra durability to the fixture
- Optional Titanium Inserts for extremely thin wall areas
- Unlimited custom options
- Usability Guarantee



PCB Assembly Process Tooling
pentagon EMS
ELECTRONIC MANUFACTURING SOLUTIONS

570 NE 53rd Ave. - Hillsboro, OR 97124 - (503) 924-2747 - www.pentagon-ems.com

We're on the world's best assembly lines.
Shouldn't we be on yours?



Universal Wave Solder Pallets

Make any PCB conveyor-friendly with Universal Wave Solder Pallets from Pentagon EMS. Pentagon's universal wave solder fixtures are designed to support a PCB that would otherwise be unable to be processed through wave soldering due to odd shape or proximity of components to the PCB edge.

- Makes any PCB conveyor-friendly
- Fully adjustable perimeter holddowns permit easy placement exactly where they are needed
- Center bars easily adjust for PCB width
- Available Overarm Bar option with titanium hook eliminates sag on large boards
- Anodize option on stiffener bars to indicate the type of wave solder process (ie. organic, no clean, lead free)
- Optional Titanium Edge Steps add extra durability to the fixture
- Usability Guarantee

