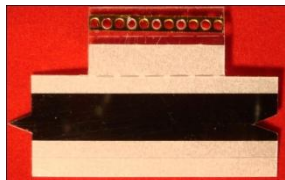


Splicing Solutions for the SMT Industry

SpliceRite offers a complete line of tape splicing products and tools along with cover tape extenders



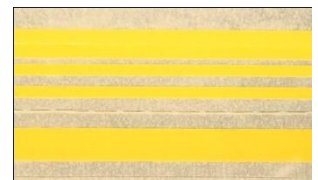
Cover Tape Extenders



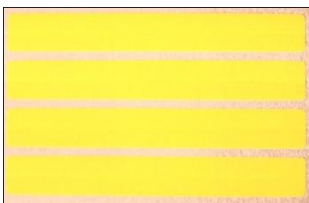
Clip and Special Tape



Clip and Splice Tape



Special Splice Tape



Single Splice Tape
(multi-up card)



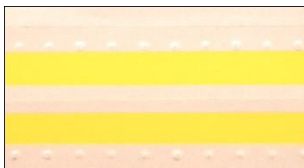
Brass Splice Clips



Steel Splice Clips



Single Splice Tape



Double Splice Tape
(w/outside dimples)



Super Double Splice Tape
(w/edge guide)



Super Double Splice Tape
(w/outside dimples)



Super Double Splice Tape
(w/edge guide and dimples)



Splice Tool for Joining
Carrier Tapes



Tape Cutter



Splice Tool for Joining
Carrier Tapes



Cutting Scissors



SpliceRite SMD Cover Tape Extenders Application Notes



Application:

Cover tape extenders are used when a reel of SMD components doesn't have a leader at the beginning of the reel. Without the leader, components are often discarded or have to be repackaged before being used.

The tape extenders add an additional 508mm (20") of tape as a leader and feed into SMT placement equipment as a piece of cover tape.

Can be used with either paper or plastic tape, punched or formed pockets, from 8 - 44mm width.

Use Instructions:

Remove the protective, backing paper from the tape extender exposing the yellow or blue adhesive side of the tape.

Attach the adhesive side of the tape extender to the end of the cover tape on the reel or strip of parts. Make sure that the entire adhesive strip, approximately 1.75" is fully attached to the existing cover tape leaving no adhesive under the tape exposed.

The non-adhesive, transparent end of the tape extender can now be fed into the tape feeder.

No tools are required for use of the cover tape extenders.

Caution:

Handle the cover tape extenders with clean hands that are free of hand lotions, oil, grease, salts etc., as this will affect the adhesion properties of the cover tape extenders.



MurrayPercival

2014 Brown Rd. • Auburn Hills, Michigan 48326 • (248) 276-9970 • Fax (248) 276-9980 • Outside Michigan (800) 405-1730



SpliceRite SMD Cover Tape Extenders



Cover tape extenders are used when a reel of SMD components doesn't have a leader at the beginning of the reel. Without the leader, components are often discarded or have to be repackaged before being used.

The tape extenders add an additional 508mm (20") of tape as a leader and feed into SMT placement equipment as a piece of cover tape.

Can be used with either paper or plastic tape, punched or formed pockets, from 8 - 44mm width.

PART #	DESCRIPTION	DIMENSIONS	QUANTITY
SR.0505.1	SMD Cover Tape Extender for 8/12 mm Carrier Tape	5mm wide x 508mm length (0.20" x 20")	Box of 500
SR.0509.1	SMD Cover Tape Extender for 16mm Carrier Tape	12mm wide x 508mm length (0.47" x 20")	Box of 500
SR.0518.1	SMD Cover Tape Extender for 24mm Carrier Tape	16mm wide x 508mm length (0.63" x 20")	Box of 250
SR.0525.1	SMD Cover Tape Extender for 32mm Carrier Tape	24mm wide x 508mm length (.94" x 20")	Box of 250
SR.0532.1	SMD Cover Tape Extender for 44mm Carrier Tape	32mm wide x 508mm length (1.3" x 20")	Box of 250

Note: For pricing and availability, please contact us at:



MurrayPercival



SpliceRite SMD Single Splice Tape (Multi-up card)



Can be used with either paper or plastic tape, punched or formed pockets, from 8-24mm in width

PART NUMBER	DESCRIPTION	APPLICATION	QUANTITY
SR.0208.4	SMD Single Splice Tape - 8mm Yellow - 4.8mm wide x 45mm length	For 8mm carrier tapes	4 strips/card 4000 strips/box
SR.0212.4	SMD Single Splice Tape - 12mm Yellow - 6mm wide x 45mm length	For 12mm carrier tapes	4 strips/card 4000 strips/box
SR.0216.4	SMD Single Splice Tape - 16mm Yellow - 9.5mm wide x 45mm length	For 16mm carrier tapes	4 strips/card 4000 strips/box
SR.0224.2	SMD Single Splice Tape - 24mm Yellow - 15mm width x 45mm length	For 24mm carrier tapes	2 strips/card 2000 strips/box

Note: For pricing and availability, please contact us at:



MurrayPercival

2014 Brown Rd. • Auburn Hills, Michigan 48326 • (248) 276-9970 • Fax (248) 276-9980 • Outside Michigan (800) 405-1730



SpliceRite SMD Double Splice Tape Application Notes



Accurate joining of SMD carrier tapes ensures smooth running of the joint through the pick and place feeder. The following is a quick and simple method for using the SMD Double Splice Tape to create perfect, reliable joints.

SMD Double Splice Tape features include:

- Maintains precise pitch spacing and cover tape integrity
- Connectors supplied in convenient lengths
- No special tools or fixtures required

SMD Double Splice Tape is supplied in short lengths, ready for use. After peeling off the cover tape, raised dots of the clear plastic carrier engage the sprocket holes and align the SMD component tapes perfectly. The first adhesive tape joins the SMD cover tapes. There is a perforated center line on the carrier which simplifies folding the connector around the component tape. The component tape is then further aligned and joined from the bottom side.

1. Cut each SMD tape-end squarely across a sprocket hole so that slightly less than $\frac{1}{2}$ a hole remains. For some types of tape, it may be necessary to ease the start of the cover tape off the component carrier tape about 1mm to ensure that the cover tape lifts off without a break.
2. Remove the opaque cover tape from the Tape Connector. Be certain the yellow or blue adhesive strips remain attached to the clear plastic carrier.
3. Join the ends of the SMD tapes together by engaging the raised dots of the clear plastic carrier in the sprocket holes. Press the yellow or blue adhesive tape onto the cover tape.
4. Fold the splice tape on the perforations, around the SMD tape and engage the dot in the sprocket holes. Press the other yellow or blue adhesive tape onto the underside of the SMD tape.
5. Remove and discard the clear plastic carrier.

Caution: Handle the double splice tape with clean hands that are free of hand lotions, oil, grease, salts etc., as this will affect the adhesion properties of the splice tape.



Murray Percival



SpliceRite SMD Double Splice Tape (Yellow)



Alignment is done without tools or special fixtures using the pre-spaced dimples in the hard plastic card. Can be used with either paper or plastic punched tape from 8 - 24mm in width. Maintains precise pitch spacing and cover tape integrity.

PART NUMBER	DESCRIPTION	APPLICATION	QUANTITY
SR.0108.1	SMD Double Splice Tape - 8mm Yellow w/outside sprocket dimples	For 8mm carrier tapes	Box of 500
SR.0112.1	SMD Double Splice Tape - 12mm Yellow w/outside sprocket dimples	For 12mm carrier tapes	Box of 500
SR.0116.1	SMD Double Splice Tape - 16mm Yellow w/outside sprocket dimples	For 16mm carrier tapes	Box of 500
SR.0124.1	SMD Double Splice Tape - 24mm Yellow w/outside sprocket dimples	For 24mm carrier tapes	Box of 500

Note: For pricing and availability, please contact us at:

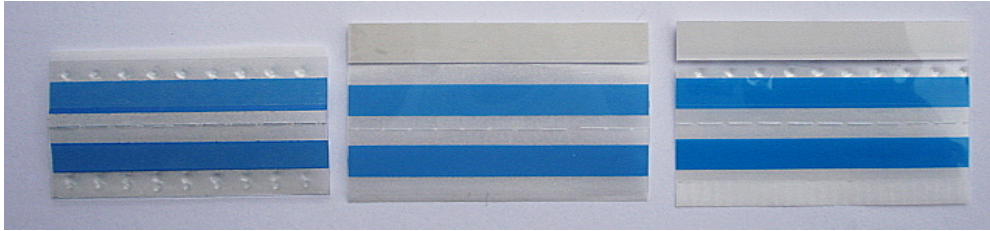


Murray Percival

2014 Brown Rd. • Auburn Hills, Michigan 48326 • (248) 276-9970 • Fax (248) 276-9980 • Outside Michigan (800) 405-1730



SpliceRite SMD Super Double Splice Tape (Blue)



New blue color tape with better adhesion across all ranges of carrier tape and external conditions. This may be used with either paper or plastic tape, formed or punched pockets.

PART #	DESCRIPTION	APPLICATION	QUANTITY
SR.0108.1B	SMD Super Double Splice Tape - 8mm Blue with outside sprocket dimples	Used with 8mm carrier tapes	Box of 500
SR.0112.1B	SMD Super Double Splice Tape - 12mm Blue with outside sprocket dimples	Used with 12mm carrier tapes	Box of 500
SR.0116.1B	SMD Super Double Splice Tape - 16mm Blue with outside sprocket dimples	Used with 16mm carrier tapes	Box of 500
SR.0124.1B	SMD Super Double Splice Tape - 24mm Blue with outside sprocket dimples	Used with 24mm carrier tapes	Box of 500

SR.0108.2B	SMD Super Double Splice Tape - 8mm Blue with edge guide	Used with 8mm carrier tapes	Box of 500
SR.0112.2B	SMD Super Double Splice Tape - 12mm Blue with edge guide	Used with 12mm carrier tapes	Box of 500
SR.0116.2B	SMD Super Double Splice Tape - 16mm Blue with edge guide	Used with 16mm carrier tapes	Box of 500
SR.0124.2B	SMD Super Double Splice Tape - 24mm Blue with edge guide	Used with 24mm carrier tapes	Box of 500

SR.0108.3B	SMD Super Double Splice Tape - 8mm Blue with dimples and edge guide	Used with 8mm carrier tapes	Box of 500
SR.0112.3B	SMD Super Double Splice Tape - 12mm Blue with dimples and edge guide	Used with 12mm carrier tapes	Box of 500
SR.0116.3B	SMD Super Double Splice Tape - 16mm Blue with dimples and edge guide	Used with 16mm carrier tapes	Box of 500
SR.0124.3B	SMD Super Double Splice Tape - 24mm Blue with dimples and edge guide	Used with 24mm carrier tapes	Box of 500

Note: For pricing and availability, please contact us at:

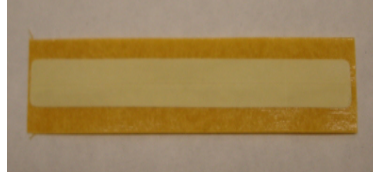


MurrayPercival

2014 Brown Rd. • Auburn Hills, Michigan 48326 • (248) 276-9970 • Fax (248) 276-9980 • Outside Michigan (800) 405-1730



SpliceRite SMD Single Splice Tape and Clips



Splice tape can be used with either paper or plastic tape, punched or formed pockets, from 8-24mm in width.

PART NUMBER	DESCRIPTION	APPLICATION	QUANTITY
SR.0208.0	SMD Single Splice Tape - 8mm	For 8mm carrier tape	Box of 1000
SR.0212.0	SMD Single Splice Tape - 12mm	For 12mm carrier tape	Box of 1000
SR.0216.0	SMD Single Splice Tape - 16mm	For 16mm carrier tape	Box of 1000
SR.0224.0	SMD Single Splice Tape - 24mm	For 24mm carrier tape	Box of 1000
SR.BSC	SMD Brass Splice Clip for Joining Tapes	For all carrier tape	Box of 4000
SR.SSC	SMD Steel Splice Clip for Joining Tapes	For all carrier tape	Box of 1000
SR.BSC.210.K	SMD Splice Kit includes 4000 each Brass Splice Clips and 4000 each Single Splice Tapes - 8mm *	For 8mm carrier tape	4000 each Tape and Clips

* Note: SMD Splice Kits can be made with brass or steel clips in 12mm, 16mm and 24mm carrier tape widths.

For pricing and availability, please contact us at:

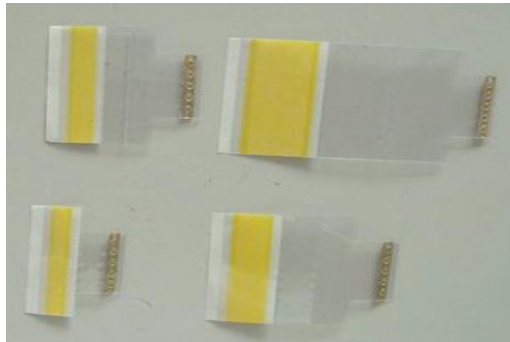


Murray Percival

2014 Brown Rd. • Auburn Hills, Michigan 48326 • (248) 276-9970 • Fax (248) 276-9980 • Outside Michigan (800) 405-1730



SpliceRite SMD Clip and Splice Tape



An innovative design with a brass clip and single splice tape on a plastic backing. Can be used with either paper or plastic tape, punched or formed pockets, from 8 - 24mm width. Use with SR.SPLTL Splice Tool.

PART NUMBER	DESCRIPTION	APPLICATION	QUANTITY
SR.CLSP.8	SMD Clip and Splice Tape - 8mm Yellow with brass splice clip	Used with 8mm carrier tapes	Box of 500
SR.CLSP.12	SMD Clip and Splice Tape - 12mm Yellow with brass splice clip	Used with 12mm carrier tapes	Box of 500
SR.CLSP.16	SMD Clip and Splice Tape - 16mm Yellow with brass splice clip	Used with 16mm carrier tapes	Box of 500
SR.CLSP.24	SMD Clip and Splice Tape - 24mm Yellow with brass splice clip	Used with 24mm carrier tapes	Box of 500

Note: For pricing and availability, please contact us at:



2014 Brown Rd. • Auburn Hills, Michigan 48326 • (248) 276-9970 • Fax (248) 276-9980 • Outside Michigan (800) 405-1730



SpliceRite SMD Single Splice Tape and Brass Clips



Splice tape can be used with either paper or plastic tape, punched or formed pockets, from 8-24mm in width.

PART NUMBER	DESCRIPTION	APPLICATION	QUANTITY
SR.0208.0	SMD Single Splice Tape -8mm	Used for 8mm carrier tape	Box of 1000
SR.0212.0	SMD Single Splice Tape -12mm	Used for 12mm carrier tape	Box of 1000
SR.0216.0	SMD Single Splice Tape -16mm	Used for 16mm carrier tape	Box of 1000
SR.0224.0	SMD Single Splice Tape -24mm	Used for 24mm carrier tape	Box of 1000
SR.BSC	SMD Brass Splice Clip for Joining Tapes	Used for all carrier tape	Box of 4000
SR.BSC.210.KT	SMD Splice Kit includes 4000 each Brass Splice Clips and 4000 each Single Splice Tapes -8mm *	Used for 8mm carrier tape	4000 each Tape and Clips

* Note: SMD Splice Kits can be made for 12mm, 16mm and 24mm carrier tape widths.

Note: For pricing and availability, please contact us at:



MurrayPercival



SpliceRite SMD Splice Tools



Part Number SR.SPLTL

Splice Tool. Designed for SMD carrier tapes from 8mm to 44mm in width

Ensures that SMD component reels can be joined quickly and securely with brass splice clip and splice tapes of any width

Ergonomically designed for easy handling with colored handles



Part Number SR.NSPLTL

Splice Tool. Designed for SMD carrier tapes from 8mm to 44mm in width

Ensures that SMD component reels can be joined quickly and securely with brass splice clip and splice tapes of any width

This tool can be easily bolted to a cart work surface



Part Number SR.CUTPLS

SMD Tape Cutter

Unique design with zigzag cut for the precise cutting of SMD carrier tapes prior to splicing

Used for 24mm and 32mm carrier tapes



Part Number SR.CUT

SMD Tape Cutter

Designed specifically for precise cutting of SMD carrier tapes prior to splicing

Used for 8, 12 and 16mm carrier tapes

Note: For pricing and availability, please contact us at:



Murray Percival