

Vibra-TITE®



THREADLOCKERS • THREAD SEALANTS
RETAINING COMPOUNDS • LIQUID GASKETING
CYANOACRYLATES • ANTI-SEIZE COMPOUNDS
UV CURABLES • EPOXIES • AND MORE!



ND
Vibra-TITE® 90706
Anti-Seize
Aluminum, Copper,
& Graphite
GENERAL PURPOSE
LUBRICANT
Reduces excessive wear on threads of gears, cables, chains, and sprockets. Protects against rust and corrosion.
NET WT. 16 OZ (454 g)
COMPETES WITH LOCTITE® SILVER GRADE ANTI-SEIZE

ND
Vibra-TITE
VC-3
THREADMATE
Prevents loosening (from vibration)
ADJUSTABLE • UV CURABLE
Net. 1 fl oz (30ml)

ND
12125
Vibra-TITE
THREADLOCKER
MEDIUM STRENGTH
REMOVABLE
FUADOR DE ROSCA: FUERZA MEDIA
For fasteners from 1/4" to 3/4"
FOOD CERTIFIED
EYE & SKIN IRRITANT. WASH BEFORE USING.
NET 4.5 FL OZ (250mL)
COMPETES WITH LOCTITE® 242 ARE REGISTERED TRADEMARKS OF HENKEL CORP. USA

ND
Vibra-TITE
INSTANT SUPER GLUE
MULTI-PURPOSE
Surface Insensitive
For strong, quick repairs
NET 0.5 FL OZ (15 mL)
Competes with Loctite® 401
CAUTION: Eye & respiratory irritant.

ND
53050
Vibra-TITE
RETAINING
GENERAL PURPOSE
FOR TIGHT FITTING SETS
EYE & SKIN IRRITANT. WASH BEFORE USING.
NET 3.4 FL OZ (50mL)
COMPETES WITH LOCTITE® 271 ARE REGISTERED TRADEMARKS OF HENKEL CORP. USA

ND
14010
Vibra-TITE
THREADLOCKER
HIGH STRENGTH
For fasteners up to 1" dia.
READ BACK PANEL BEFORE USE
NET 3.4 FL OZ. (10 mL)
COMPETES WITH LOCTITE® 271
LOCTITE IS A REGISTERED TRADEMARK AND 271 IS A TRADEMARK OF HENKEL CORP. USA

ND A Company You Can Rely On

Since 1955, ND Industries has been providing top quality fastening and assembly related products and services to a wide variety of industries including automotive, electronics, aerospace, appliance, and many more. ND's commitment to improvement has led to a continuous investment in the best equipment, facilities, and people to serve you.

Vibra-TITE the bottled product division of ND Industries

Vibra-Tite is one of the world's market leaders in anaerobics, cyanoacrylates, epoxies and ultraviolet technologies. Vibra-Tite is quickly becoming one of the most highly respected names in the adhesive industry. And, as a result of ND's low overhead expenses and in-house capabilities, Vibra-Tite products offer the same high quality and superior performance of other name brand products at a cost saving of **up to 40%.**



A Single-Source Supplier

ND is a vertically integrated company and has achieved a unique position in today's market place with a wide range of products designed to seal, cushion, insulate, temporarily retain, and control noise and vibration. ND's high quality line of products, customer driven solutions and on-time-delivery is the reason why more companies are turning to ND as their single-source supplier.

A Global Presence

ND owns and operates numerous facilities in North America. ND's latest state of the art expansion includes facilities in Taiwan and China with licensees located throughout the world. No matter where they are located, each ND facility is a fully supported member of the ND family dedicated to providing innovative, affordable fastening and assembly related products and services.



Table of Contents



Threadlocking.....	4-6
Vibra-Tite® VC-3® Threadmate.....	7
Thread Sealing.....	8-9
Retaining	10-11
Liquid Gasketing.....	12
RTV Silicone Gaskets.....	12
Anti-Seize Lubricants.....	13
Cyanoacrylates.....	14-16
Light Cure Adhesives.....	17
Epoxies	18
Modified Methacrylates.....	19
MS Polymers.....	19
Structural Adhesives.....	20
Hot Melts	20
Urethanes.....	21
Primers, Activators & Accelerators	22
Thermal Defender.....	23
Vibra-Tite Specialty Products	24-27
ND R & D, Chemical Blending, and Private Label Services.....	28-29
ND Pre-Applied Products and Services.....	30-31

Vibra-TITE[®]

THREADLOCKERS

- Locks and seals threaded fasteners
- Prevents loosening from shock and vibration
- Performs better than mechanical lockers
- Alleviates rust-lock
- Prevents leakage

To decrease set-up time, use Excel Primer N (Vibra-Tite 611) or Excel Primer T (Vibra-Tite 612) with all anaerobic threadlockers. See Vibra-Tite primer listing on page 22.



Vibra-Tite Part #	Available Sizes	LOCTITE [®] Part#	Product Description	Color	Viscosity (cP)	Max Gap Fill (in)	Torque Strength, Break/Prevail (in LB.)	Temp Range	Fixture Time (min.)	Specific Gravity	Specs Met
111 222[™] LOW STRENGTH											
11102	2 mL Bullet		Easy to remove - for fasteners smaller than 1/4" in diameter.	Purple	1200 - 5000 Thixotropic	0.007	75 / 25	-65°F to 300°F	10 - 30	1.05	MIL-S-46163A ASTM D-5363 NSF Non-Food
11110	10 mL Bottle	21463									
11150	50 mL Bottle	21464									
11125	250 mL Bottle										
11100	1L Jug										
121 242[®] MEDIUM STRENGTH											
12102	2 mL Bullet		Removable Grade for fasteners 1/4" to 3/4" in diameter.	Blue	1200 - 5000 Thixotropic	0.007	120 / 45	-65°F to 300°F	10 - 30	1.07	MIL-S-46163A ASTM D-5363 NSF Non-Food
12110	10 mL Bottle	24221									
12150	50 mL Bottle	24231									
12125	250 mL Bottle	24241									
12100	1L Jug	24243									
122 243[™] OIL TOLERANT											
12202	2 mL Bullet		Used on fasteners from 1/4" to 3/4" in diameter.	Blue	2250 - 12000 Thixotropic	0.015	195 / 70	-65°F to 300°F	5 - 10	1.08	
12210	10 mL Bottle	24077									
12250	50 mL Bottle	24078									
12225	250 mL Bottle	24079									
12200	1L Jug	21433									
123 246[™] MEDIUM STRENGTH HI-TEMP OIL TOLERANT											
12350	50 mL Bottle	29514	Fasteners 1/4" to 3/4"	Blue	2600		170 / 50	450°F	5	1.15	ASTM D5363
125 MEDIUM STRENGTH GEL											
12508	8 mL Tube		Removable Grade for fasteners 1/4" to 3/4" in diameter.	Blue	Gel	0.015	120 / 45	-65°F to 300°F	10 - 30	1.1	
12535	35 mL Pump										
12550	50 mL Tube										
12516	16 oz Jar w/Brush										
131 262[™] PERMANENT STRENGTH											
13102	2 mL Bullet		Permanently locks nuts and bolts up to 1" in diameter.	Red	1800 - 5000 Thixotropic	0.007	200 / 250	-65°F to 300°F	5 - 20	1.05	MIL-S-46163A ASTM D-5363 NSF Non-Food
13110	10 mL Bottle	26221									
13150	50 mL Bottle	26231									
13125	250 mL Bottle	26241									
13100	1L Jug	26243									
132 263[™] HIGH STRENGTH PRIMERLESS, OIL TOLERANT											
13250	50 mL Bottle	1330585	Performs primerless on both inactive and active metals.	Red	400	0.007	275 / 290	360°F	5	1.1	ASTM D5363
135 PERMANENT STRENGTH GEL											
13508	8 mL Tube		Permanently locks nuts and bolts up to 1" in diameter.	Red	Gel	0.015	200 / 100	-65°F to 300°F	5 - 20	1.1	
13535	35 mL Pump										
13550	50 mL Tube										
13516	16 oz Jar w/Brush										
137 272[™] HIGH TEMP / HIGH STRENGTH											
13750	50 mL Bottle	27240	Permanently locks nuts and bolts up to 1 1/2" in diameter.	Red	9500	0.007	300 / 250	-65°F to 450°F	5 - 60	1.11	
13725	250 mL Bottle	27270									
13700	1L Jug	27285									
140 271[™] HIGH STRENGTH											
14002	2 mL Bullet		Permanently locks nuts and bolts up to 1" in diameter.	Red	500	0.007	250 / 275	-65°F to 300°F	10 - 30	1.10	MIL-S-46163A ASTM D-5363
14010	10 mL Bottle	27121									
14050	50 mL Bottle	27131									
14025	250 mL Bottle	27141									
14000	1L Jug	27143									
146 277[™] LARGE DIAMETER / HIGH STRENGTH											
14602	2 mL Bullet		Permanently locks nuts and bolts up to 1 1/2" in diameter.	Red	7000	0.010	300 / 250	-65°F to 300°F	10 - 20	1.12	MIL-S-46163A ASTM D-5363
14610	10 mL Bottle	21434									
14650	50 mL Bottle	27731									
14625	250 mL Bottle	27741									
14600	1L Jug	27743									
150 290[™] MEDIUM STRENGTH WICKING GRADE											
15002	2 mL Bullet		Used on pre-assembled fasteners up to 1/2" in diameter and porous die castings.	Green	12	0.004	85 / 250	-65°F to 300°F	5 - 20	1.08	MIL-S-46163A ASTM D-5363 NSF Non-Food
15010	10 mL Bottle	29021									
15050	50 mL Bottle	29031									
15025	250 mL Bottle	29041									
15000	1L Jug	29043									
325 425[™] PLASTIC THREADLOCKER											
32502	2 mL Bullet		Small metal & plastic fasteners	Blue	80		4 / 2	180°F	2	1.10	
32520	20 g Bottle	1330585									

Vibra-TITE®

Threadlockers



**2 mL Resealable
Bullet Tubes**
**15-25 Applications
in each Tube!**

Vibra-Tite 111 Low Strength Threadlocker that eliminates vibrational loosening and seals against leakage and corrosion. Ideal for use on assemblies requiring periodic adjustment. Typical uses include soft metal fasteners, precision screws, and locking fasteners smaller than 1/4" (6 mm) in diameter. **COMPETES WITH LOCTITE® 222™**

Vibra-Tite 121 Medium, Removable Strength Threadlocker that seals nuts and bolts allowing disassembly using standard tools. Typical uses include locking nuts or bolts from 1/4" to 3/4" (6-20 mm) in diameter. **COMPETES WITH LOCTITE® 242®**

Vibra-Tite 122 Medium Strength Threadlocker with greater oil tolerance. Typical uses include locking nuts or bolts ranging from 1/4" to 3/4" (6-20 mm) in diameter. **COMPETES WITH LOCTITE® 243™**

Vibra-Tite 123 Medium Strength Hi-Temp Oil Tolerant Threadlocker. Typical uses include locking nuts or bolts ranging from 1/4" to 3/4" (6-20 mm) in diameter at continuous temperatures up to 450°F. **COMPETES WITH LOCTITE® 246™**

Vibra-Tite 131 High Strength Permanent Threadlocker for maximum security suitable for most applications where disassembly is not required. Designed to withstand extreme environmental conditions and chemical exposure. Ideal for the prevention of rust and corrosion. Typical uses include permanently locking nuts or bolts up to 1" in diameter. Heat and hand tools are needed for disassembly. **COMPETES WITH LOCTITE® 262™**

Vibra-Tite 132 High Strength Threadlocker For permanently locking or sealing nuts and bolts up to 1" diameter. Primerless formula will cure even on passive materials such as stainless steel. **COMPETES WITH LOCTITE® 263™**

Vibra-Tite 137 High Strength Threadlocker for maximum security that withstands temperatures to 450° F. Typical uses include bolts up to 1 1/2" in diameter. Heat and hand tools are needed for disassembly. **COMPETES WITH LOCTITE® 272™**

Vibra-Tite 140 High Strength Threadlocker for maximum security. Suitable for most applications where disassembly is not required. Typical uses include permanently locking nuts or bolts up to 1" (25 mm) in diameter. Heat and hand tools are needed for disassembly. **COMPETES WITH LOCTITE® 271™**

Vibra-Tite 146 High Strength Threadlocker for permanently locking nuts or bolts up to 1 1/2" in diameter. Heat and hand tools are needed for disassembly. **COMPETES WITH LOCTITE® 277™**

Vibra-Tite 150 Wicking Grade, Medium Strength Threadlocker designed specifically for use on pre-assembled connections. Seals small gaps through capillary action. Typical uses include pre-assembled fasteners up to 1/2" in diameter and porous die castings. Protects welds from rust and corrosion. Hand tools are needed for disassembly. **COMPETES WITH LOCTITE® 290™**

Vibra-Tite 325 Plastic Threadlocker is designed to be a low strength, fast curing material for small metal or plastic fasteners. Vibra-Tite 325 fixtures within 2 minutes and fully cures within 24 hrs. **COMPETES WITH LOCTITE® 425™**

Vibra-Tite Threadlockers lock and seal threaded fasteners. Liquid threadlockers are considered to be the most effective method of locking threaded fasteners because they unitize the entire assembly. They perform better than traditional mechanical devices such as lock washers preventing any loosening from shock and vibration.

Low Strength

For soft metal fasteners. Locks fasteners smaller than 1/4" in diameter.



Medium Strength

Locks nuts and bolts larger than 1/4" in diameter.



High Strength

Permanently locks nuts and bolts larger than 1/4" in diameter.



Wicking Grade

Pre-assembled fasteners and porous die castings.



Vibra-TITE® THREADLOCKERS

www.vibra-tite.com

ND Industries and Vibra-Tite are registered trademarks of ND Industries, Inc.

Vibra-TITE®

Threadlockers

100 ct. 2 mL Bullet Tubes
in handy counter-top
fishbowl display.

Available with 121 and 131 threadlockers.



Part #12199
Vibra-Tite 121* Fishbowl
with 100 ct. 2 mL Bullet Tubes
Medium Strength Threadlocker
*COMPETES WITH LOCTITE® 242®

Part #13199
Vibra-Tite 131* Fishbowl
with 100 ct. 2 mL Bullet Tubes
Permanent Strength Threadlocker
*COMPETES WITH LOCTITE® 262™



Part #13535
High Strength
Threadlocker in 35 mL
pump dispenser.

Part #12535
Medium Strength
Threadlocker in 35 mL
pump dispenser.



No Mess!
No Waste!
No-drip!
Provides complete coverage
every time!

LOCTITE and 242 are registered trademarks
and 262 is a trademark of Henkel Corp. USA.

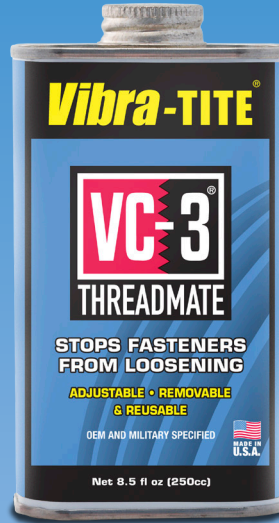
**Not an Adhesive!
Not an Anaerobic!**

Vibra-TITE®



Vibra-Tite® VC-3® Threadmate is a powerful locking and sealing coating for threaded fasteners that works on the principle of “friction through viscosity”. Vibra-Tite VC-3 Threadmate utilizes a special blend of acrylic resins to prevent fasteners from loosening even under the stress of prolonged and extreme shock and vibration. Vibra-Tite VC-3 also works to resist leakage at fastening points by acting as a dam between mated threads.

Available sizes:
#21302 | 1 mL Pillow Pack
#21305 | 5 mL Tube
#21330 | 30 cc Bottle w/Brush
#21325 | 250 cc Can



One Tough Application!

- Stops fasteners from loosening from extreme shock and vibration
- Works with metal, wood, pp and ppe plastics and more
- Fasteners are easily adjusted, removed and reused
- Works on fasteners of any shape or size, from tiny eyeglass screws to large construction bolts
- Works with internal or external threads

This product is approved by TACOM*
 for use on the U.S. Army's main battle tank!
 *US Army Tank-automotive and Armaments Command Part# 11663357



Vibra-TITE® THREADLOCKERS

Vibra-Tite® VC-3® Threadmate Specifications

Container size (manual application)	1 mL, 1oz. (30 cc), 8 oz. (250 cc), or larger containers
Color	Red (custom colors can be manufactured dependent on quantity)
Solvent	Methyl ethyl ketone. Also available in Ethyl Acetate, Methyl Propyl Ketone & Dimethyl Carbonate
Cured form	Resilient plastic
Shelf life	Indefinite (under ideal storage conditions)
Chemical resistance	Offers resistance to most solvents (acts as a partial corrosion barrier)
Dries to touch	In several minutes
Dries for use	10-30 minutes. For critical applications 24 hrs is recommended.
Drying method for bulk production	Best achieved using considerable airflow in addition to temperature not exceeding 130°F
Operational temperature range	-65°F to +165°F (-54°C to +74°C) For other temperature applications, please consult factory
Reusable	5 or more times
Engagement torque	Moderate
Breakaway	No distinct break; slow, fluid release as material cold flows
Standard coating length	1 to 1 1/2 times diameter
Lead thread requirement	None
Thread fill requirement	30 – 50% of the thread root area

Note: See MSDS for Safety & Material Handling Instructions

Vibra-Tite VC-3 Threadmate meets or exceeds the performance requirements of the following specifications and/or standards:

MILITARY:

- Lockheed Martin: 11663357, CAGE # 18876, P5407, 507-13-410, P5407, P5407-1
- General Dynamics: 13233419
- Harris Corporation: DWG. P30-0013
- National Stock Number: 8030-00-163-5792
- Naval Sea Sys Comm: 5174855
- Raytheon: DWG. 998730
- US Army Missile Comm: P5407-1, MIS-28867A
- US Air Force: #19207
- US Army Tank Automotive Command GD: #11663357

OEM:

- Allied Signal: PCS5618, EMS73314
- Atlanta Research: SP 10234
- Delphi: 00047127
- Detroit Diesel: 9S244
- Grumman Aerospace: GF105VP
- Leco Corporation: 764-709
- Meritor (Rockwell): 005-2308-010

www.vibra-tite.com

ND Industries and Vibra-Tite are registered trademarks of ND Industries, Inc.

Vibra-TITE®

THREAD SEALANTS

- Seals and secures metal pipes and fittings
- Fills the space between threaded metal parts
- Prevents leakage caused by tape shredding, vibration loosening, solvent evaporation, or damaged threads
- Prevents corrosion and galling of threads
- Low and high pressure applications
- Seals to burst strength of most piping systems
- Facilitates assembly
- Service removable



Vibra-Tite Part #	Available Sizes	LOCTITE® Part#	Product Description	Color	Viscosity (cP)	Max Gap Fill (in)	Sealing Pressure (PSI)	Temp Range	Fixture (min.)	Suggested Primer	Specs Met	
420		565™/592™	CONTROLLED STRENGTH - SLOW CURE									
42050	50 mL Tube	56531/59231	Industrial grade, controlled locking strength, metal fittings. High temp & high performance. Gasoline resistant.	White	150,000 - 550,000 Paste	0.012	10,000	-65°F to 300°F	60	611 or 612		
42025	250 mL Tube	56541/59241										
42016	16oz Jar w/brush											
42000	1L Jug	56543/59243										
427		577™	MEDIUM STRENGTH - STAINLESS STEEL									
42750	50 mL Tube	21456	High Performance Sealant.	Yellow	420,000	0.012	10,000	-65°F to 300°F	90	611 or 612		
42725	250 mL Tube											
440		545™	PNEUMATIC / HYDRAULIC SEALANT									
44002	2 mL Bullet		Pneumatic and hydraulic sealant for fluid, power and gas system connections.	Purple	16,000	0.007	10,000	-65°F to 300°F	30	611 or 612		
44010	10 mL Bottle	32429										
44050	50 mL Bottle	54531										
44025	250 mL Bottle	54541										
44000	1L Jug											
442		5452™	HYDRAULIC FAST CURE SEALANT									
44250	50 mL Tube	1265769	Gel formula. Fast curing.	Purple	29,000 - 200,000		10,000	-65°F to 300°F		611 or 612		
444		569™	HYDRAULIC SEALANT - HIGH PRESSURE									
44410	10 mL Bottle		Hydraulic sealant, non shrink, high vibration and shock resistant.	Brown	300 - 500	0.007	10,000	-65°F to 300°F	10	612		
44450	50 mL Bottle	56931										
44425	250 mL Bottle	56941										
44400	1L Jug	56943										
446		554™	REFRIGERANT SEALANT - HIGH PRESSURE									
44610	10 mL Bottle	25882	Refrigerant sealant. Maximum solvent resistance.	Red	6000 - 8000		10,000	-65°F to 300°F	10	611 or 612		
44650	50 mL Bottle											
44625	250 mL Bottle	55441										
44600	1L Jug											
460		567™	HIGH TEMPERATURE - STAINLESS STEEL									
46006	6 mL Tube	56707	General purpose. For stainless steel and other inert metal threaded pipes and fittings. Gasoline resistant.	White	350,000	0.012	10,000	-65°F to 400°F	60	611 or 612	GM 1182607	
46050	50 mL Tube	56747										
46025	250 mL Tube	56765										
46016	16 oz Jar w/brush	33241										
46000	1L Jug	56790										
480			MULTI-PURPOSE - FBC COMPATIBLE									
48004	4 oz Jar w/brush		PTFE non-hardening and non-toxic thread sealant for use in potable water systems.	White	160,000 - 260,000		10,000	-35°F to 500°F	n/a	n/a		
48008	8 oz Jar w/brush											
48016	16 oz Jar w/brush											
486			MULTI-PURPOSE									
48004	4 oz Jar w/brush		Non-Curing Thread Sealant with PTFE. Used to seal against many liquids and gases both under pressure and vacuum.	Off White	25,000 - 100,000		5,000	-65°F to 300°F	n/a	n/a		
48008	8 oz Jar w/brush											
48016	16 oz Jar w/brush											

Vibra-TITE®

Thread Sealants

Vibra-Tite 420 PTFE Instant Pipe Sealant - Industrial Grade with controlled lubricity, prevents galling while protecting from corrosion and rust. Parts may be repositioned up to 24 hours after assembly. Typical uses include stainless steel and all other metal fittings. **COMPETES WITH LOCTITE® 565™/592™**

Vibra-Tite 427 Medium Strength - Stainless Steel Pipe Sealant with high viscosity, locks and seals threaded fittings with high performance withstanding temperatures up to 300°F (149°C). Suitable for stainless steel. **COMPETES WITH LOCTITE® 577™**

Vibra-Tite 440 Hydraulic & Pneumatic High Pressure Sealant with excellent solvent resistance. It locks hydraulic and pneumatic connections producing a high strength, high pressure seal, while allowing easy disassembly with standard tools. Typical uses include pneumatic fittings, small pipe threads, and hydraulic fittings up to 2" in diameter. **COMPETES WITH LOCTITE® 545™**

Vibra-Tite 442 Hydraulic Fast Cure Sealant is a fast curing gel thread sealant which withstands temperatures up to 300°F (149°C). **COMPETES WITH LOCTITE® 5452™**

Vibra-Tite 444 Hydraulic High Pressure Sealant is a general purpose pipe sealant that creates an instant seal on threaded joints with a high resistance to solvents and withstands temperatures to 300°F (149°C). Typical uses: Small pipe threads and hydraulic fittings. **COMPETES WITH LOCTITE® 569™**

Vibra-Tite 446 High Pressure Sealant - Refrigerant Sealant provides excellent resistance to solvents on threaded pipes and fittings up to 3" in diameter. Typical uses include refrigeration systems and service with volatile chemicals. **COMPETES WITH LOCTITE® 554™**

Vibra-Tite 460 High Temperature - Stainless Steel Pipe Sealant prevents galling and provides an instant low pressure seal on coarse fitting threads which is further strengthened as the product cures. Assembled parts can withstand temperatures up to 400°F (204°C) and may be repositioned up to 24 hours after assembly. Typical uses include stainless steel, aluminum, galvanized metal and other inert metal threaded pipe fittings. **COMPETES WITH LOCTITE® 567™**

Vibra-Tite 480 Multi-Purpose - FBC Compatible Thread Sealant with PTFE is designed to lubricate and seal threaded connections. A non-curing and non-toxic formula, Vibra-Tite 480 contains no lead or harmful metals and can be used in potable water systems.

Vibra-Tite 486 Multi-Purpose Thread Sealant with PTFE is a creamy white paste for general purpose pipe and thread sealing. Typical applications include sealing threaded pipes, pipe fittings and flanges to seal against liquids and gases.

Benefits:

- Lubricates during assembly
- Seals regardless of assembly torque
- Seals to the burst rating of the pipe
- Provides controlled disassembly torque
- Easy dispensing
- Good chemical and temperature resistance, 300°F (150°C)
- Instant seal
- Seals and secures metal fittings

Typical Applications:

- Fire protection industry
- Chemical processing industry
- Petroleum refining industry
- Waste treatment facilities
- Utilities and power generation
- Gas compression and distribution
- Automotive and industrial equipment

Vibra-Tite Thread Sealants seal and secure metal pipes and fittings, by filling the space between threaded metal parts. Thread sealants prevent leakage caused by tape shredding, vibration loosening, solvent evaporation, and damaged threads. Vibra-Tite products are designed for both low and high pressure applications. Thread sealants seal to the burst strength of most piping systems. Because of the lubricating properties, Vibra-Tite thread sealants make it easy to assemble fittings as well as prevent galling of the threads. For repairs, parts may be disassembled with basic hand tools.



Vibra-TITE® THREAD SEALANTS

Vibra-TITE®

RETAINING COMPOUNDS

- Increases the shear strength on non-threaded cylindrical metal assemblies
- Fills voids between close-fitting metal assemblies
- Creates a solid one-piece assembly
- Seals joints against leakage
- Prevents corrosion
- UV / Blacklight indicator



Vibra-Tite Part #	Available Sizes	LOCTITE® Part#	Product Description	Viscosity (cP)	Max Gap Fill (in)	Shear Strength (PSI)	Temp Range	Fixture Time (min.)	Specific Gravity	Suggested Primer	Specs Met
530		675™/609™	GENERAL PURPOSE - GREEN								
53002	2 mL Bullet		General purpose for: rotors, augments press fits, shafts, bushings, bearings and pulleys.	125	0.005	2300+	-65°F to 300°F	10 - 20	1.10	611 or 612	MIL-R-46082 ASTM D-5363 GM-1183024
53010	10 mL Bottle	60921									
53050	50 mL Bottle	60931									
53025	250 mL Bottle	60941/67541									
53000	1 L Jug	60943									
535			GENERAL PURPOSE GEL - GREEN								
53502	50 mL Tube		High strength no drip anaerobic gel with good temperature and solvent resistance.	Gel	0.015		-65°F to 300°F	5 - 10	1.09	611 or 612	
53525	250 mL Tube										
538		638™	HIGH STRENGTH - GREEN								
53850	50 mL Bottle	21448	High strength for loose fitting parts.	2500	0.015	4000+	-65°F to 300°F	5	1.09	611 or 612	
53825	250 mL Bottle	21449									
53800	1 L Jug										
541		680™	HIGH STRENGTH - SLIP FIT - GREEN								
54102	2 mL Bullet		High strength gap filling. Permanently retains slip-fit. For: rotors, shafts, impellers, and splines.	1200	0.015	3000+	-65°F to 300°F	20-40	1.11	612	NSF Non-Food
54110	10 mL Bottle	68015									
54150	50 mL Bottle	68035									
54125	250 mL Bottle	68060									
54100	1 L Jug	68090									
542		635™	HIGH STRENGTH - LARGE GAP - GREEN								
54202	2 mL Bullet		High viscosity permits larger machine tolerances. For: rotors, shafts, impellers and splines.	2000	0.015	4000+	-65°F to 300°F	20-40	1.05	612	MIL-R-46082 ASTM D-5363
54210	10 mL Bottle										
54250	50 mL Bottle	63531									
54225	250 mL Bottle	63541									
54200	1 L Jug										
546		N/A	IMPACT RESISTANT - GREEN								
54650	50 mL Bottle		Flexible for impact resistance.	600	0.015	2000+	-65°F to 300°F	20-40	1.09	611	
54625	250 mL Bottle										
54600	1 L Jug										
548		648™	RAPID CURING - GREEN								
54850	50 mL Bottle	21444	Fast fixturing for close fitting parts, high strength for stainless steel.	500	0.007	3500+	-65°F to 350°F	5	1.09	611 or 612	
54825	250 mL Bottle	21445									
54800	1 L Jug										
550		11358™	CORE PLUG SEALANT - BLUE								
55050	50 mL Bottle		Designed to be used on freeze, core, and cup plug applications.	8500	0.02	2300+	-65°F to 300°F	10 - 20	1.09	611	
55000	1 L Jug	11358									
560		640™	HIGH TEMPERATURE - FAST SET - GREEN								
56002	2 mL Bullet		High temperature fast setting for: rotors, shafts, bushings, bearings and pulleys.	600	0.007	3000+	-65°F to 400°F	5 - 60	1.12	611 or 612	MIL-R-46082 ASTM D-5363
56010	10 mL Bottle	64031									
56050	50 mL Bottle	64041									
56025	250 mL Bottle										
56000	1 L Jug										
566		660™	GAP FILLING - FOR WORN PARTS - GREY								
56650	50 mL Tube		High viscosity, press-fit, slip-fit.	Paste	0.020	2400+	-65°F to 350°F	30-45	1.04	611 or 612	
567		620™	HIGH TEMPERATURE - LARGE GAP - GREEN								
56702	2 mL Bullet		High temperature gap filling for: rotors, shafts, bushings, bearings and pulleys.	7000	0.015	3500+	-65°F to 450°F	20 - 30	1.16	611 or 612	GM-1183024
56710	10 mL Bottle	62015									
56750	50 mL Bottle	62040									
56725	250 mL Bottle	62070									
56700	1 L Jug	62085									

Vibra-TITE[®]

Retaining Compounds

Vibra-Tite 530 General Purpose Retaining Compound bonds metal assemblies. A low viscosity retaining compound recommended for diametral gap distances up to 0.005" to augment press fits. Withstands temperatures of up to 300° F providing a shear strength of 3,000 psi after 24 hours with a fixture time of 10 minutes. Typical uses: Rotors, shafts, bushings, bearings, and pulleys. **COMPETES WITH LOCTITE[®] 609™/675™**

Vibra-Tite 538 High Strength Retaining Compound provides maximum strength for use where high dynamic force or cyclic loading is anticipated. **COMPETES WITH LOCTITE[®] 638™**

Vibra-Tite 541 High Strength Retaining Compound cures in room temperatures filling diametral gaps up to 0.015". Typical uses include fitted cylindrical parts replacing set screws, clamp rings, and snap rings. It provides a shear strength greater than 3,000 psi after 24 hours with a fixture time of 10 minutes. **COMPETES WITH LOCTITE[®] 680™**

Vibra-Tite 542 High Strength Retaining Compound is a high viscosity retaining compound that allows parts to be adjusted during assembly. It provides a shear strength greater than 4,000 psi. Typical uses include slip fit components, rotors, shafts, impellers, and splines. **COMPETES WITH LOCTITE[®] 635™**

Vibra-Tite 546 Substantial Impact Resistance flexible for high shock/impact performance from hub to rotor.

Vibra-Tite 548 Press Fit / Rapid Cure works with continuous operating temperatures up to 350°F. Provides a shear strength greater than 3,500 psi. **COMPETES WITH LOCTITE[®] 648™**

Vibra-Tite 550 Core Plug Sealant is designed to be used on freeze, core, and cup plug applications. A thixotropic formula, it lends itself well to vertical dispensing. **COMPETES WITH LOCTITE[®] 11358™**

Vibra-Tite 560 High Temperature Retaining Compound is a high temperature (400°F / 204°C), high strength adhesive for retention of cylindrical components, where disassembly is not required on press-fit assemblies. It provides a shear strength greater than 3,000 psi. Typical uses: Rotors, shafts, bushings, bearings, and pulleys with temperatures up to 400°F. **COMPETES WITH LOCTITE[®] 640™**

Vibra-Tite 566 Gap Filling Compound is designed for use on worn cylindrical parts where tolerances are poor. **COMPETES WITH LOCTITE[®] 660™**

Vibra-Tite 567 High Temperature Retaining Compound locks metal cylindrical assemblies with diametral clearances up to 0.015". Provides a shear strength greater than 3,500 psi on steel sealing against leakage while preventing corrosion. Typical uses: Rotors, shafts, bushings, bearings, and pulleys. **COMPETES WITH LOCTITE[®] 620™**

Benefits:

- Reduce machining costs
- Press/Shrink fits can be replaced with slip fits
- No expensive finishes required
- Increase mechanical strength of the assembly
- 100% surface contact
- Retains and seals, eliminates corrosion and seizure
- Restore fit to worn or out-of-tolerance assemblies
- Eliminate part replacement
- Part distortion is eliminated

Typical Applications:

- Mount bearings in housings or shafts
- Mount motors, gears, sprockets and pulleys on shafts
- Retain cylindrical linings
- Replace keys and set screws
- Augment slip fits
- Lock keyways
- Secure splines, bushings, bearings, oil seals, water pumps core plugs and more

Vibra-Tite Anaerobic Retaining Compounds are designed to increase shear strength on non-threaded, cylindrical metal assemblies. The liquid anaerobic material fills voids between close-fitting metal assemblies. It cures to a toughened thermoset-plastic which creates a solid one piece assembly. Retaining compounds seal joints against leakage and prevent corrosion. These materials have gained wide acceptance as a standard method for assembling press-fit and slip-fitted parts.



Vibra-TITE[®] RETAINING COMPOUNDS

Vibra-TITE[®]

ANAEROBIC GASKETING



Benefits:

- Remains liquid when exposed to air
- Cures when confined between mating flanges
- Can fill gaps as large as 0.050
- Alleviates the need for preformed gaskets

Typical Applications:

Can be used as a form-in-place gasket:

- Thermostats
- Pumps
- Gearboxes
- Compressors
- Transmission housings
- Axle covers

Vibra-Tite Part #	Available Sizes	LOCTITE [®] Part #	Product Description	Color	Viscosity (cP)	Max Gap Fill (in)	Temperature Range	Cure Speed	Primer	Specs Met
709		509™	FLEXIBLE GASKET MAKER							
70950 70930	50 mL Tube 300 mL Cart	21525	Flexible flange sealant resists vibration. Fluorescent blue color aids visual assembly inspections.	Blue	65,000 - 200,000 Thixotropic	Unprimed: 0.010 Primed: 0.020	-65°F to 300°F	Unprimed: 6-48hrs Primed: 1-6hrs	611 or 612	
710		510™	HIGH TEMPERATURE RIGID FLANGE SEALANT							
71050 71025 71030	50 mL Tube 250 mL Tube 300 mL Cart	51031 51041 51074	High temperature rigid flange sealant withstands temperatures up to 400°F.	Pink	188,000 - 500,000 Thixotropic	Unprimed: 0.010 Primed: 0.020	-65°F to 400°F	Unprimed: 4-24hrs Primed: 30min-4hrs	611 or 612	
724			FAST FLANGE SEALANT							
72450 72425	50 mL Tube 250 mL Tube		Provides fast low pressure sea.	Orange	62,000 - 300,000 Thixotropic	Unprimed: 0.010 Primed: 0.020	-65°F to 300°F	Unprimed: 4-24hrs Primed: 30min-4hrs	611	
730		518™	FLEXIBLE GASKET MAKER - SOLVENT RESISTANT							
73050 73025 73030	50 mL Tube 250 mL Tube 300 mL Cart	51831 51845	Suitable for aluminum and rigid machined flanges.	Red	800,000 - 3,750,000 Thixotropic	Unprimed: 0.010 Primed: 0.020	-65°F to 300°F	Unprimed: 1-12hrs Primed: 15min-2hrs	611	GM-1182863
732		515™	FLEXIBLE GASKET MAKER							
73250 73225 73230	50 mL Tube 250 mL Tube 300 mL Cart	51531 51580	General purpose gasket maker that flexes with flanges.	Purple	275,000 - 950,000 Thixotropic	Unprimed: 0.010 Primed: 0.020	-65°F to 300°F	Unprimed: 4-24hrs Primed: 30min-4hrs	611	

RTV SILICONE GASKET MAKERS

Designed for use in mechanical assemblies, RTV Silicones create a "formed-in-place" gasket with excellent resistance to temperature, moisture, vibration, and weathering. RTV Silicones can eliminate the need for costly cut gaskets.

- Adhesion to many substrates
- Withstands extreme temp. cycling
- Excellent chemical resistance
- One-part formulation
- Room temperature cure
- Extremely flexible



Vibra-Tite Part #	Available Sizes	LOCTITE [®] Part #	Color	Cure Type	Temperature Range °F
992		5920™			
99280 99230 99291	80 mL 300 mL 4.5 gal	82046	Copper	Oxime	-65 to 700
993		5900™			
99330 99391	300 mL 4.5 gal	20166	Heavy Body Black	Oxime	-75 to 500
995		595™			
99507 99580 99530 99591	1.5 oz 80 mL 300 mL 4.5 gal	80242 59575	Clear	Acetoxy	-65 to 450
996		596™			
99680 99630 99691	80 mL 300 mL 4.5 gal	59675	Red	Acetoxy	-75 to 650
997		587™			
99780 99730 99791	80 mL 300 mL 4.5 gal	58775	Blue	Oxime	-65 to 500
998		598™			
99880 99830 99891	80 mL 300 mL 4.5 gal	59875	Black	Oxime	-65 to 500
999		5999™			
99980 99930 99991	80 mL 300 mL 4.5 gal	18581	Grey	Oxime	-65 to 500

Vibra-TITE®

ANTI-SEIZE COMPOUNDS

Anti-Seize lubricants are specially formulated to prevent seizing, galling, pitting, excessive wear, and corrosion. It will not wash, squeeze or burn out, even at elevated temperatures and pressure.

Benefits:

- Eases assembly and disassembly
- Reduces friction and wear
- Protects assemblies from corrosion
- Withstands high temperatures and pressures

Typical Applications:

- Gears, Chains, Cables, Sprockets, Fastener Threads



Includes Brush-Cap Applicator

Vibra-TITE® GASKETING & LUBRICATING

Vibra-Tite Part #	Available Sizes	LOCTITE® Part#	Product Description	Color	Viscosity (cP)	Temp Resistance	K-Value	Specs Met
906 MARINE GRADE ANTI-SEIZE WITH MOLY								
90616	16oz Jar w/brush		Protects assemblies exposed to fresh and salt water. Works well in high-humidity conditions. Contains no metals and is not a marine pollutant. Effective under extreme pressures.	Black	100,000 Paste	2600°F	0.17	MIL-PRF-907E
9070 Silver ALUMINUM ANTI-SEIZE COMPOUND								
90702	2 mL Bullet		Lubricant ideal for all metals to prevent seizing, galling and excessive wear. Resists harsh chemical environments. Consists of fine flakes of aluminum and graphite suspended in a blend of lubricants and oils.	Silver	120,000 - 175,000 Paste	1800°F	0.15	MIL A-907F GM-6108M
90704	4oz Jar w/Brush	80209						
90708	8oz Jar w/Brush	76732						
90706	16oz Jar w/Brush	76764						
90700	1 gal							
90705	5gal Plastic Pail	76775						
90707	100 pc fishbowl							
9071 C5-A® COPPER ANTI-SEIZE COMPOUND								
90712	2 mL Bullet		Ideal for use on softer metal parts such as copper and brass. Protects from rust and corrosion as well as prevents seizing, galling and excessive wear. Excellent resistance to harsh chemical environments. Consists of fine flakes of copper and graphite suspended in a blend of lubricants and oils.	Copper	120,000 - 175,000 Paste	1800°F	0.15	MIL A-907F
90714	4oz Jar w/Brush	51144						
90718	8oz Jar w/Brush	51147						
90716	16oz Jar w/Brush	51007						
90710	1 gal							
90715	5gal Plastic Pail							
9072 Nickel NICKEL ANTI-SEIZE COMPOUND								
90722	2 mL Bullet		Lubricant ideal for extreme temperatures. Copper and graphite free base. Resistant to harsh chemical environments. Excellent for stainless steel and other metal fittings.	Nickel	350,000 - 500,000 Paste	2600°F	0.15	MIL A-907F
90724	4oz Jar w/Brush							
90728	8oz Jar w/Brush	77124						
90726	16oz Jar w/Brush	77164						
90720	1 gal							
90725	5gal Plastic Pail	77175						
90727	100 pc fishbowl							
908 FOOD GRADE ANTI-SEIZE								
90816	16oz Jar w/brush		Vibra-Tite Food Grade Anti-Seize is specifically developed for use in applications where incidental food contact is possible. Protects metal parts from seizure, galling, rust, corrosion and heat freeze by adhering to the metal surface.	White	122,000 Paste	1800°F	0.15	MIL-PRF-907E NSF (H1)
90800	1 Gal							

www.vibra-tite.com

ND Industries and Vibra-Tite are registered trademarks of ND Industries, Inc.
LOCTITE and C5-A are registered trademarks of Henkel Corp. USA.

Vibra-TITE[®] CYANOACRYLATES

are single-part clear adhesives that rapidly polymerize at room temperature and develop strength extremely fast (fixture 0 to 60 seconds). They are initiated by moisture on the parts surface or by accelerators.



Vibra-Tite Part #	Available Sizes	LOCTITE [®] Part#	Product Description	Viscosity (cP)	Max Gap Fill (in.)	Shear Strength (PSI)	Temp Range °F	Fixture Time	Specific Gravity	Base	Specs Met
GENERAL PURPOSE											
300	General Purpose - Clear										
30002 30028 30054	2 mL Bullet 1 oz Tube 1 lb Bottle		A single component medium viscosity cyanoacrylate adhesive.	150 - 300	0.006	3200	-65 to 200	20sec	1.06	Ethyl	A-A3097 Type II - Class 2
304	General Purpose - O-Ring Bonder - Clear										
30402 30410 30428 30454	2 mL Bullet 1/3 oz Bottle 1 oz Bottle 1 lb Bottle	4047 [™] 46551 46561	A single component, low to medium viscosity cyanoacrylate adhesive.	80 - 100	0.005	3200	-65 to 200	20sec	1.06	Ethyl	A-A3097 Type II - Class 2
309	General Purpose Gel - Clear										
30903 30920 30922	3 gm Tube 20 gm Tube 200 gm Tube	40904 40945 40974	A single component high viscosity gel cyanoacrylate adhesive. Ideal for bonding porous materials.	9,500 - 12,500	0.01	3500	-65 to 200	75sec	1.06	Ethyl	A-A3097 Type II - Class 5
314	Plastic Bonder - Clear										
31402 31428 31454	2 mL Bullet 1 oz Bottle 1 lb Bottle	4147 [™] 41450 41461	A single component low to medium viscosity cyanoacrylate.	110	0.006	3200	-65 to 200	20sec	1.05	Ethyl	A-A3097 Type II - Class 2
316	Gap Filling Plastic Bonder - Clear										
31602 31628 31654	2 mL Bullet 1 oz Bottle 1 lb Bottle	4167 [™] 41650 41661	A medium to high viscosity cyanoacrylate with extended drying times for filling large gaps.	1500 - 2100	0.008	3200	-65 to 200	40sec	1.05	Ethyl	A-A3097 Type II - Class 3
320	Wicking Type Plastic Bonder - Clear										
32002 32028 32054	2 mL Bullet 1 oz Bottle 1 lb Bottle	4207 [™] 42050 42061	A fast setting wicking grade adhesive ideal for bonding preassembled parts.	1 - 3	0.002	3200	-65 to 200	10sec	1.06	Ethyl	A-A3097 Type II - Class 1
321	Fast Wicking Grade - Clear										
32128 32154	1 oz Bottle 1 lb Bottle		A single component low viscosity cyanoacrylate adhesive.	3	0.002	3200	-65 to 200	5sec	1.06	Ethyl	
322	Gap Filling Plastic Bonder - Clear										
32202 32228 32254	2 mL Bullet 1 oz Bottle 1 lb Bottle	4227 [™] 42250 42261	A single component high viscosity cyanoacrylate adhesive with a quicker setting speed than most high viscosity materials.	1500 - 2100	0.008	3400	-65 to 200	40sec	1.06	Ethyl	A-A3097 Type II - Class 3
344	Wire Tacking - Clear / Fluorescent										
34402 34428 34454	2 mL Bullet 1 oz Bottle 1 lb Bottle	4447 [™] 12294	Designed for general purpose bonding on all types of substrates where gap filling is required.	600 - 850	0.002	3200	-65 to 200	15sec	1.06	Ethyl	A-A3097 Type II - Class 3
362	Fast Set - Clear										
36202 36220 36254	2 mL Bullet 20 gm Bottle 1 lb Bottle	4987 [™] 49861	A single component high viscosity cyanoacrylate adhesive with a quick setting speed.	1500 - 2100	0.006	3400	-65 to 200	40sec	1.06	Ethyl	A-A3097 Type II - Class 3
381	Gap Filling - Wire Tacking - Clear										
38102 38120 38128 38154	2 mL Bullet 20 gm Bottle 1 oz Bottle 1 lb Bottle	3827 [™]	A high viscosity cyanoacrylate adhesive for electronics. Offers gap-filling and thermal cycling resistance.	4000-5000	0.008	3500	-65 to 200	<30sec	1.06	Ethyl	
395	General Purpose - Clear										
39502 39528 39554 39599	2 mL Bullet 1 oz Bottle 1 lb Bottle 100 pc fishbowl	4957 [™] 49550 49561	A single component low viscosity cyanoacrylate adhesive. Suitable for general-purpose applications on metals rubbers and plastics.	30 - 70	0.004	3200	-65 to 200	15sec	1.06	Ethyl	A-A3097 Type II - Class 1

2 mL Resealable Bullet Tubes (15-20 Applications in Each Tube)

Typical Bonding Applications:

- Circuit board wires
- Ceramic, fabric, metal and leather bonding
- Molded parts such as automotive weather stripping, wiper blades
- Speaker cones
- Equipment identification tags
- Control panel switches
- Rubber pads for equipment base or legs



CYANOACRYLATES

Vibra-Tite Part #	Available Sizes	LOCTITE® Part#	Product Description	Viscosity (cP)	Max Gap Fill (in.)	Shear Strength (PSI)	Temp Range °F	Fixture Time	Specific Gravity	Base	Specs Met
METAL BONDER											
330		430™	Metal & Rubber Bonder - Clear								
33002	2 mL Bullet		A single component, low to medium viscosity ethyl cyanoacrylate adhesive.	123 - 127	0.006	2600	-65 to 200	30sec	1.09	Ethyl	A-A3097 Type II - Class 1
33028	1 oz Bottle	43050									
33054	1 lb Bottle	43061									
SURFACE INSENSITIVE											
301		401™	Surface Insensitive - General - Clear								
30102	2 mL Bullet		A fast setting, low to medium viscosity cyanoacrylate adhesive for use on all types of substrates. Ideal for filling small gaps.	90-120	0.005	3200	-65 to 200	15sec	1.06	Ethyl	
30114	15 mL Bottle	40140									
30114BC	15 mL Bottle	40140									
30120	20 gm Bottle	40140									
30154	1 lb Bottle	40161									
30104	4 lb Jug										
305			Surface Insensitive - General Purpose - Clear								
30502	2 mL Bullet		A medium viscosity cyanoacrylate adhesive with good flow characteristics. Extremely fast setting.	40 - 60	0.004	3200	-65 to 200	15sec	1.06	Ethyl	A-A3097 Type II - Class 1
30520	20 gm Bottle										
30554	1 lb Bottle										
306		406™	Surface Insensitive - Wicking - Clear								
30602	2 mL Bullet		A low viscosity with an extremely fast setting time. Ideal for bonding preassembled parts.	15 - 35	0.004	3200	-65 to 200	15sec	1.06	Ethyl	A-A3097 Type II - Class 1
30620	20 gm Bottle	40640									
30654	1 lb Bottle	40661									
307			Surface Insensitive - Wicking - Clear								
30702	2 mL Bullet		An extremely fast setting wicking grade adhesive ideal for bonding preassembled parts.	1 - 3	0.002	3200	-65 to 200	15sec	1.06	Ethyl	A-A3097 Type II - Class 1
30720	20 gm Bottle										
30754	1 lb Bottle										
331			Surface Insensitive - Gap Filling - Clear								
33102	2 mL Bullet		Suitable for general-purpose bonding but provides excellent strength and speed on all rubber compounds.	650 - 950	0.002	3400	-65 to 200	15sec	1.06	Ethyl	A-A3097 Type II - Class 3
33114	.5 oz Bottle										
33120	20 gm Bottle										
33154	1 lb Bottle										
333		435™	Surface Insensitive - General Purpose - Clear								
33302	2 mL Bullet		Designed to set and adhere rapidly to inactive surfaces.	250-350	0.006	3000-3500	-65 to 200	30sec	1.05	Ethyl	
33320	20 gm Bottle	40994									
33354	1 lb Bottle	40995									
347		447™	Surface Insensitive - General Purpose - Clear								
34702	2 mL Bullet		A single component, medium to high viscosity cyanoacrylate adhesive. It is particularly designed to set and adhere rapidly to inactive surfaces.	600 - 850	0.007	3200	-65 to 200	15sec	1.06	Ethyl	A-A3097 Type II - Class 3
34714	.5 oz Bottle										
34720	20 gm Bottle										
34728	1 oz Bottle										
34754	1 lb Bottle										
354		454™	Surface Insensitive - Porous Gel - Clear								
35403	3 gm Tube	45404	Ideal for bonding porous materials or when controlling adhesive flow is critical. Offers maximum gap filling and repositioning time.	9500 - 12,500	0.01	3500	-65 to 200	75sec	1.08	Ethyl	A-A3097 Type II - Class 4
35420	20 gm Tube	45440									
35422	200 gm Tube										
35430	300 gm Cart	45478									
356			Surface Insensitive - Gel - Black								
35620	20 gm Tube		Offers maximum gap filling and repositioning time.	Thixo Gel	0.01		-65 to 200	75min	1.08	Ethyl	A-A3097 Type II - Class 4

www.vibra-tite.com

ND Industries and Vibra-Tite are registered trademarks of ND Industries, Inc. LOCTITE is a registered trademark and 430, 401, 406, 435, 447, and 454 are trademarks of Henkel Corp. USA.

Vibra-TITE CYANOACRYLATES

Cyanoacrylates, commonly known as Super Glues, are highly useful in virtually every industry. Some of the higher volume applications include printed circuit board wires and a broad range of medical devices.

OEM applications include small and large appliances, automotive applications, toys, and cosmetic packaging.

MRO applications include repair of plastic, rubber and metal parts.

Everyday consumers are a large volume users of Super Glues for use and repair on everything from crafts to broken toys and household gadgets.

Factors that Effect CA Performance

- Low humidity = slower cure speed
- Low viscosity for small gaps
- Difficult-to-bond surfaces: Teflon, Silicone, Polyethylene, Polypropylene
- Excess adhesive - Less is best

CYANOACRYLATES

Vibra-Tite Part #	Available Sizes	LOCTITE® Part#	Product Description	Viscosity (cP)	Max Gap Fill (in.)	Shear Strength (PSI)	Temp Range °F	Fixture Time	Specific Gravity	Base	Specs Met
LOW ODOR / LOW BLOOM											
303		403™	Low Odor & Low Bloom - Gap Filling - Clear								
30320	20 gm Bottle	40340	No-odor and non-blooming characteristics.	1200-	0.008	3200 / tds	-65 to 200	30sec	1.05	Alkoxy-Alkyl	
30354	1 lb Bottle	40361		1500							
308		408™	Low Odor & Low Bloom - Wicking - Clear								
30802	2 mL Bullet	40840	No-odor and non-blooming characteristics for when vapor control is an issue.	2 - 6	0.002	2400	-65 to 200	15sec	1.06	Ethoxy Ethyl	
30820	20 gm Bottle										
30854	1 lb Bottle										
317			Low Odor & Low Bloom - Toughened - Clear								
31720	20 gm Bottle		Designed for applications needing higher peel strength.	2500	0.008	2300	-65 to 200	30sec	1.05	Ethyl	
31754	1 lb Bottle										
318			Low Odor & Low Bloom - Toughened - Black								
31820	20 gm Bottle		Designed for applications needing higher peel strength.	2500	0.008	2300	-65 to 200	30sec	1.05	Ethyl	
31854	1 lb Bottle										
360		460™	Low Odor & Low Bloom - General Purpose - Clear								
36002	2 mL Bullet	46040	No-odor and nonblooming characteristics make this product user friendly for vapor control.	50	0.004	2600	-65 to 200	30sec	1.06	Ethyl	
36020	20 gm Bottle										
36054	1 lb Bottle										
410		410™	Rubber Toughened - Gap Filling - Black								
41002	2 mL Bullet	41045	Provides superior shock and thermal resistance when bonding in harsh environments	2000 - 3000	0.008	3700	-65 to 280	90sec	1.06	Ethyl	A-A3097 Type II - Class 4
41020	20 gm Bottle										
41054	1 lb Bottle										
411		411™	Rubber Toughened - Shock & Impact Resistant - Clear								
41102	2 mL Bullet	41145	A single component high viscosity, rubber-toughened ethyl cyanoacrylate adhesive. Superior shock and thermal resistance.	2400	0.008	3700	-65 to 280	75sec	1.06	Ethyl	A-A3097 Type II - Class 3, A-A3097 Type II - Class 3 - Ethyl
41120	20 gm Bottle										
41128	1 oz Bottle										
41154	1 lb Bottle										
411		411™	Rubber Toughened - Shock & Impact Resistant - Clear								
41102	2 mL Bullet	41145	Provides superior shock and thermal resistance when bonding rubbers, metals, and plastics in harsh environments.	400 - 600	0.006	3700	-65 to 280	50sec	1.06	Ethyl	A-A3097 Type II - Class 2
41120	20 gm Bottle										
41128	1 oz Bottle										
41154	1 lb Bottle										
388		380™	Rubber Toughened - Shock/Temp Resistant - Black								
38802	2 mL Bullet	38050	Provides superior shock and thermal resistance when bonding rubbers, metals, and plastics in harsh environments.	400 - 600	0.006	3700	-65 to 280	50sec	1.06	Ethyl	A-A3097 Type II - Class 2
38828	1 oz Bottle										
38854	1 lb Bottle										
370			HD RUBBER BONDER								
370			Rubber Bonder - Wicking - Clear								
37020	20 gm Bottle		A fast setting wicking grade adhesive ideal for bonding preassembled parts.	2	0.002	3200	-65 to 200	10sec	1.06	Ethyl	A-A3097 Type II - Class 1
37054	1 lb Bottle										
371			Rubber Bonder - Clear								
37120	20 gm Bottle		A single component, extremely fast setting low viscosity cyanoacrylate adhesive.	10 - 20	0.003	3200	-65 to 200	10sec	1.06	Ethyl	A-A3097 Type II - Class 1
37154	1 lb Bottle										
372			Rubber Bonder - Clear								
37220	20 gm Bottle		A single component, fast setting medium viscosity cyanoacrylate adhesive.	160 - 220	0.006	3000	-65 to 200	15sec	1.06	Ethyl	A-A3097 Type II - Class 2
37254	1 lb Bottle										
373			Rubber Bonder - Gap Filling - Clear								
37320	20 gm Bottle		Provides excellent strength and speed on all rubber compounds.	1800	0.008	3400	-65 to 200	10sec	1.06	Ethyl	A-A3097 Type II - Class
37354	1 lb Bottle										

Vibra-TITE®

Light Cure Adhesives

Vibra-Tite light cure adhesives are single-part, photo-initiated acrylates that cure on demand when exposed to UV-light.

- Almost instant cure
- Some cure with very low intensity
- Flexible or rigid products available
- High optical clarity & non-yellowing
- Bonds a wide range of substrates



Vibra-TITE® BONDING PRODUCTS

Vibra-Tite Part #	Available Sizes	LOCTITE® Part#	Product Description	Cure Type	Color	Key Substrates	Viscosity (cP)	Elongation At Break %	Shore Hardness	Temp Range	Fixture Time	Shear Strength (PSI)	Activator
208	UV STRUCTURAL ADHESIVE												
20831	30 mL Syringe		Impact resistant gel.	UV / Primer	Opaque	Glass, Metal	Gel	300	D70	-65°F to 250°F		2500	638
20800	1 L Bottle												
211	LIGHT CURE ADHESIVE												
21150	50 mL Bottle		Low viscosity glass bonder.	UV / Visible	Clear	Glass	100	100	D80	-65°F to 250°F	10 Sec	2300	
21100	1 L Bottle												
215	LIGHT CURE ADHESIVE												
21550	50 mL Bottle		Potting material.	UV / Visible	Clear	Glass, Plastic	8000	200			5 Sec		
21500	1 L Bottle												
216	UV STRUCTURAL ADHESIVE												
21600	1 L Bottle		Impact resistant gel.	UV	Clear	Glass, Metal	Gel	>20	D65	-45°F to 300°F	10 Sec	1600	
220	LIGHT CURE ADHESIVE												
22050	50 mL Bottle		Medium viscosity glass bonder.	UV / Visible	Amber	Glass	1200			-65°F to 250°F	3 Sec	2000	
22025	250 mL Bottle												
22000	1 L Bottle												
229	349™ LIGHT CURE ADHESIVE												
22950	50 mL Bottle	34931	High viscosity glass bonder.	UV	Clear / Straw	Glass, Metal	9500	300	D70	-65°F to 266°F		1600	
22900	1 L Bottle	34990											
230	352™ UV STRUCTURAL ADHESIVE												
23050	50 mL Bottle	35241	Impact resistant adhesive.	UV / Heat / Activator	Clear / Amber	Glass, Metal	19500	290	D60	-65°F to 374°F		1500	600 / 638
23000	1 L Bottle	35286											
250	LIGHT CURE ADHESIVE												
25050	50 mL Bottle		Doming product for plastics.	UV / Visible	Clear	Plastics	6000						
25000	1 L Bottle												
255	LIGHT CURE ADHESIVE												
25550	50 mL Bottle		Doming product for metals.	UV / Visible	Clear	Metals	6000						
25500	1 L Bottle												
265	LIGHT CURE ADHESIVE												
26550	50 mL Bottle		Light tacking adhesive.	UV / Visible	Clear	Glass, Plastics	200	10		-65°F to 188°F	3 Sec	2900	
26500	1 L Bottle												
291	3921™ ACRYLIC UV / VISIBLE W/ FLUORESCENCE												
29150	50 mL Bottle		Needle Bonder.	UV / Visible	Clear / Fluorescent	Glass, Metal, Thermoplastic, Polycarbonate, Polyvinylchloride	150			-65°F to 300°F			
29100	1 L Bottle	36485											
294	LIGHT CURE ADHESIVE												
29450	50 mL Bottle		UV plastic bonder.	UV / Visible	Clear	Plastics	750	300	D60	-55°F to 188°F	3 Sec	3000	
29400	1 L Bottle												
297	3971™ ACRYLIC UV / VISIBLE W/ FLUORESCENCE												
29750	50 mL Bottle		Medical device bonder.	UV / Visible	Clear / Fluorescent	Metal, Thermoplastic, Polyvinylchloride, Polyurethane	320			-65°F to 300°F			
29700	1 L Bottle	36805											

www.vibra-tite.com

ND Industries and Vibra-Tite are registered trademarks of ND Industries, Inc. LOCTITE is a registered trademark and 349, 352, 3921 and 3971 are trademarks of Henkel Corp. USA.

EPOXIES

Vibra-Tite Part #	Available Sizes	Product Description	Viscosity (cP)	Shear Strength (PSI)	Mix Ratio	Temp Range	Fixture Time	Full Cure	Specific Gravity
905 2 PART QUICK CURE - CLEAR									
90550	50 mL Dual Cart	Compare to 3M™ DP100®	Part A: 10,000	Etched Al: 1,500	1:1	-20°F to 250°F	4-6 min.	24 hrs.	Part A: 1.16
90540	400 mL Dual Cart		Part B: 12,000	CRS: 1,000					Part B: 1.14
910 2 PART, 5 MINUTE - WHITE OR BLACK									
91050	50 mL Dual Cart	Compare to 3M™ DP110® or Hysol E00NS.	Part A: Paste	Etched Al: 1,200	1:1	-20°F to 250°F	4-6 min.	24 hrs.	Part A: 1.21
91040	400 mL Dual Cart		Part B: Paste	CRS: 1,000					Part B: 1.15
911 EPOXY - GREY									
91150	50 mL Dual Cart	Compare to Fastweld 10	Part A: 280,000	CRS: 3,900	1:1	-40°F to 300°F	10 min.	24-72 hrs.	Part A: 1.48
91140	400 mL Dual Cart		Part B: 180,000						Part B: 1.48
912 OIL FIELD THREAD SEALING - GREY									
91227	8 oz Jar		Part A: 30,000	CRS: 3,000	1:1	-40°F to 300°F		24-72 hrs.	Part A: 1.21
91254	16 oz Jar		Part B: 80						Part B: 1.15
913 EPOXY - CLEAR									
91350	50 mL Dual Cart	Compare to Devon's 2-Ton Epoxy	Part A: 13,000	CRS: 2,300	1:1	-40°F to 250°F	10 min.	24-72 hrs.	Part A: 1.16
91340	400 mL Dual Cart		Part B: 7,000						Part B: 0.96
915 EPOXY - GREY									
91550	50 mL Dual Cart	Compare to Hysol E 60 NC	Part A: 6,000	Etched Al: 2,700	1:1	-40°F to 300°F	90 min.	24-72 hrs.	Part A: 1.15
91540	400 mL Dual Cart		Part B: 11,000	CRS: 2,700					Part B: 1.01
916 EPOXY - GREY									
91650	50 mL Dual Cart	Compare to Hysol E 60 HP	Part A: 60,000	CRS: 3,300	2:1	-40°F to 250°F	70-90 min.	24-72 hrs.	Part A: 1.16
91640	400 mL Dual Cart		Part B: 5,000	Etched Al: 4,300					Part B: 1.06
920 HIGH PEEL / HIGH SHEAR 2 PART EPOXY									
92050	50 mL Dual Cart		Part A: 50,000	3,500	2:1	-40°F to 300°F	70-90 min.	24-72 hrs.	Part A: 1.12
92040	400 mL Dual Cart		Part B: 4,000						Part B: 1.01
921 PLASTIC BONDER - BLACK									
92150	50 mL Dual Cart		Part A: 50,000	3,500	2:1	-40°F to 300°F	70-90 min.	24-72 hrs.	Part A: 1.12
92140	400 mL Dual Cart		Part B: 4,000						Part B: 1.01
923 ALUMINUM BONDER - OFF-WHITE									
92350	50 mL Dual Cart		Part A: 65,000	Etched Al: 3,000	2:1	-40°F to 300°F	20 min.	24- 72 hrs.	Part A: 1.16
92340	400 mL Dual Cart		Part B: 12,000	CRS: 4,000					Part B: 0.96
924 EPOXY - BLUE									
92450	50 mL Dual Cart	Compare to Lord 305	Part A: 14,000	Etched Al: 2,000	1:1	-40°F to 300°F	2 hrs	24-72 hrs.	Part A: 1.16
92440	400 mL Dual Cart		Part B: 32,500	CRS: 2,700					Part B: 0.96
930 HEAT CURE EPOXY - SILVER									
93030	300 mL Cart		900,000	CRS:5,000 Etched Al: 3,900	1 Part	-40°F to 300°F	30 min. @350°F	30 min. at 350°F	1.38
932 ENCAPSULATING EPOXY - BLACK									
93230	400 mL Dual Cart		Part A: 30,000		2:1	-40°F to 300°F	30 min. @350°F	24 hrs.	Part A: 1.61
			Part B: 1,000						Part B: 0.98
933 IGNITION COIL IMPREGNATION & ENCAPSULATION									
93318		Compare to Lord EP809	8000	1500	2:1	-55°F to 200°F	10 min.	24-72 hrs.	1.14
93350	50 mL Dual Cart								
934 INDUCTION CURE - SILVER									
93430	300 mL Cart		900,000	CRS:5,000 Etched Al: 3,900	1 Part	-40°F to 300°F	4 sec. @ 350°F	30 min. at 350°F	1.38
950 ALUMINUM PUTTY - GREY									
95054	1 lb. Pail	Compares to Devcon Aluminum Putty	Putty	Etched Al: 2,600	4:1	-40°F to 300°F	24 hrs.	48-72 hrs.	1.58 Mixed
951 ALUMINUM LIQUID - GREY									
95154	1 lb. Pail	Compares to Devcon Aluminum Liquid	20,000 Mixed	Etched Al: 2,600	5:1	-40°F to 300°F	24 hrs.	48-72 hrs.	1.58 Mixed
952 STEEL EPOXY PUTTY - GREY									
95254	1 lb. Pail	Compares to Devcon Repair Putty	Putty	Steel: 2,400	3.75:1	-40°F to 300°F	24 hrs.	48-72 hrs.	2.5 Mixed
990 FLEXIBLE TOUGHENED 2 PART EPOXY - OFF-WHITE									
99050	50 mL Dual Cart	Compares to Hysol E 120 HP	Part A: 41,000	Etched Al: 3,500	2:1	-40°F to 300°F	140-180 min.	24-72 hrs.	Part A: 1.14
99040	400 mL Dual Cart		Part B: 2,000	CRS: 4,000					Part B: 0.98

ADHESIVE DISPENSING EQUIPMENT



Vibra-Tite Part #	Product Description	Size	Mix Ratios
E001	Manual Dispense Gun - Plastic,	400 mL	1:1 and 2:1
E002	200 & 400 ml Variable Ratio Manual Dispense Gun - Metal	200 & 400 mL	1:1 and 2:1
E003	25 & 50 ml Variable Ratio Manual Dispense Gun - Metal	25 & 50 mL	1:1 and 2:1 included;(4:1 and 10:1, special order)
E004	50 mL Static Mix Nozzle, 16 Element	50 mL	1:1 and 2:1
E006	400 mL Static Mix Nozzle, 24 Element	400 mL	1:1 and 2:1
E007	300 mL Dispense Nozzle, 1/4 inch NPT - 1/8 inch orifice by 2.5 inch length	300 mL	1:1 and 2:1
E008	300 mL Dispense Nozzle, 1/4 inch NPT - cut to size orifice by 2.5 inch length	300 mL	1:1 and 2:1
E018	50 mL Static Mix Nozzle, 5 mm, 16 Element, Green	50 mL	1:1
E019	490 mL Static Mix Nozzle, 8 mm, 18 Element, Orange	490 mL	10:1
E020	50 mL Static Mix Nozzle, 5.4 mm, 16 Element, Orange	50 mL	10:1
E021	400 mL Static Mix Nozzle, 8 mm, 18 Element, White	400 mL	1:1
E023	490 mL Dual Cartridge Pneumatic Dispense Gun	490 mL	10:1
E024	490 mL Dual Cartridge Manual Dispense Gun	490 mL	10:1
E025	50 mL Dual Cartridge Manual Dispense Gun	50 mL	10:1



METHACRYLATE ADHESIVES

Vibra-Tite acrylic (methacrylate) adhesives are a room temperature curing, non-sagging, 2-part system comprised of resin and activator. Our adhesives respond well to dissimilar materials and a wide range of temperatures.

- Forms a bond on:
- aluminum
 - ABS
 - wood
 - fiberglass
 - stainless steel
 - PVC
 - ceramic
 - steel
 - composite
 - plastic
 - glass



Vibra-TITE BONDING PRODUCTS

Vibra-Tite Part #	Available Sizes	Plexus® Part#	Product Description	Available Colors	Mix Ratio By Vol.	Working Time (min)	Fixture Time (min)	Tensile Strength (PSI)	Viscosity Range (cP)																																																																																																																																																																																																																																																																																																																																																																																																					
PB300																																																																																																																																																																																																																																																																																																																																																																																																														
MA300 All Purpose - Fast Set Time; High Strength																																																																																																																																																																																																																																																																																																																																																																																																														
PB30050	50 mL Cart		General purpose. Adheres to most substrates. Rapid cure time.	Black, Cream, White	1:1	3-7	10-15	2,500-3,500	40,000-80,000																																																																																																																																																																																																																																																																																																																																																																																																					
PB30040	400 mL Cart									PB305										MA305 All Purpose - Extremely Fast Set Time										PB30550	50 mL Cart		Very rapid gel and fixture time. General purpose. Adheres to most substrates.	Black, Cream, White	1:1	2-3	4-6	2,500-3,500	40,000-80,000	PB30540	400 mL Cart		PB310										MA310 All Purpose - For Difficult-To-Bond; High Strength										PB31050	50 mL Cart		Use with plastics that are difficult to bond. Works great on fiberglass.	Black, Cream, White	1:1	8-15	18-25	3,000-3,800	40,000-80,000	PB31040	400 mL Cart		PB330										MA330 All Purpose - Medium Set Time; High Strength										PB33050	50 mL Cart		Use when a medium amount of open time is desired.	Black, Cream, White	1:1	15-24	30-45	3,000-3,800	40,000-80,000	PB33040	400 mL Cart		PB530										MA530 All Purpose - Moderate Set Time; High Strength										PB53050	50 mL Cart		Use when moderate amount of open time is desired.	Black, Cream, White	1:1	25-35	60-90	3,000-3,800	40,000-80,000	PB53040	400 mL Cart		PB560										MA560-1 All Purpose - Long Set Time; High Flex										PB56050	50 mL Cart		Use when long amount of open time is desired.	Black, Gray	1:1	55-70	200-260	2,200-2,800	140,000-180,000	PB56040	400 mL Cart		PB590										MA590 All Purpose - Longest Set Time; High Flex										PB59050	50 mL Cart		Use when the longest amount of open time is desired.	Black, Gray	1:1	90-110	260-400	2,200-2,800	140,000-180,000	PB59040	400 mL Cart		PB405										MA205HV All Purpose - Extremely Fast Set Time										PB40550	50 mL Cart		Toughened formula. Fast setting.	Black, Blue, Gray, Cream, White	10:1	2-4	4-8	2,500-3,500	140,000-180,000	PB40549	490 mL Cart		PB320										MA320 All Purpose - Medium Set Time; High Strength										PB32050	50 mL Cart		Toughened formula. Medium cure speed. No preparation needed.	Black, Blue, Gray, Cream, White	10:1	8-15	18-25	2,500-3,500	140,000-180,000	PB32049	490 mL Cart		PB420										AO/MA420 All Purpose - Fast Set Time; High Strength										PB42050	50 mL Cart		Requires virtually no surface preparation. Impact resistant.	Black, Blue, Gray, Cream, White	10:1	4-7	10-15	2,500-3,500	140,000-180,000	PB42049	490 mL Cart		PB422										MA422 All Purpose - Slow Set Time; High Strength										PB42250	50 mL Cart		Use when moderate amount of open time is desired. Toughened formula.	Black, Blue, Gray, Cream, White	10:1	18-24	30-45	2,500-3,500	140,000-180,000	PB42249	490 mL Cart		PB425										MA425 All Purpose - Long Set Time; High Strength										PB42550	50 mL Cart		Use when long amount of open time is desired. Toughened formula.	Black, Blue, Gray, Cream, White	10:1	25-35	60-90	2,500-3,500	140,000-180,000	PB42549	490 mL Cart		PB550										MA550 Marine - U.V. Stable White										PB55050	50 mL Cart		Excellent for marine industry usage.	White	10:1
PB305																																																																																																																																																																																																																																																																																																																																																																																																														
MA305 All Purpose - Extremely Fast Set Time																																																																																																																																																																																																																																																																																																																																																																																																														
PB30550	50 mL Cart		Very rapid gel and fixture time. General purpose. Adheres to most substrates.	Black, Cream, White	1:1	2-3	4-6	2,500-3,500	40,000-80,000																																																																																																																																																																																																																																																																																																																																																																																																					
PB30540	400 mL Cart									PB310										MA310 All Purpose - For Difficult-To-Bond; High Strength										PB31050	50 mL Cart		Use with plastics that are difficult to bond. Works great on fiberglass.	Black, Cream, White	1:1	8-15	18-25	3,000-3,800	40,000-80,000	PB31040	400 mL Cart		PB330										MA330 All Purpose - Medium Set Time; High Strength										PB33050	50 mL Cart		Use when a medium amount of open time is desired.	Black, Cream, White	1:1	15-24	30-45	3,000-3,800	40,000-80,000	PB33040	400 mL Cart		PB530										MA530 All Purpose - Moderate Set Time; High Strength										PB53050	50 mL Cart		Use when moderate amount of open time is desired.	Black, Cream, White	1:1	25-35	60-90	3,000-3,800	40,000-80,000	PB53040	400 mL Cart		PB560										MA560-1 All Purpose - Long Set Time; High Flex										PB56050	50 mL Cart		Use when long amount of open time is desired.	Black, Gray	1:1	55-70	200-260	2,200-2,800	140,000-180,000	PB56040	400 mL Cart		PB590										MA590 All Purpose - Longest Set Time; High Flex										PB59050	50 mL Cart		Use when the longest amount of open time is desired.	Black, Gray	1:1	90-110	260-400	2,200-2,800	140,000-180,000	PB59040	400 mL Cart		PB405										MA205HV All Purpose - Extremely Fast Set Time										PB40550	50 mL Cart		Toughened formula. Fast setting.	Black, Blue, Gray, Cream, White	10:1	2-4	4-8	2,500-3,500	140,000-180,000	PB40549	490 mL Cart		PB320										MA320 All Purpose - Medium Set Time; High Strength										PB32050	50 mL Cart		Toughened formula. Medium cure speed. No preparation needed.	Black, Blue, Gray, Cream, White	10:1	8-15	18-25	2,500-3,500	140,000-180,000	PB32049	490 mL Cart		PB420										AO/MA420 All Purpose - Fast Set Time; High Strength										PB42050	50 mL Cart		Requires virtually no surface preparation. Impact resistant.	Black, Blue, Gray, Cream, White	10:1	4-7	10-15	2,500-3,500	140,000-180,000	PB42049	490 mL Cart		PB422										MA422 All Purpose - Slow Set Time; High Strength										PB42250	50 mL Cart		Use when moderate amount of open time is desired. Toughened formula.	Black, Blue, Gray, Cream, White	10:1	18-24	30-45	2,500-3,500	140,000-180,000	PB42249	490 mL Cart		PB425										MA425 All Purpose - Long Set Time; High Strength										PB42550	50 mL Cart		Use when long amount of open time is desired. Toughened formula.	Black, Blue, Gray, Cream, White	10:1	25-35	60-90	2,500-3,500	140,000-180,000	PB42549	490 mL Cart		PB550										MA550 Marine - U.V. Stable White										PB55050	50 mL Cart		Excellent for marine industry usage.	White	10:1	40-60	80-110	2,000-2,500	140,000-180,000	PB55049	490 mL Cart																											
PB310																																																																																																																																																																																																																																																																																																																																																																																																														
MA310 All Purpose - For Difficult-To-Bond; High Strength																																																																																																																																																																																																																																																																																																																																																																																																														
PB31050	50 mL Cart		Use with plastics that are difficult to bond. Works great on fiberglass.	Black, Cream, White	1:1	8-15	18-25	3,000-3,800	40,000-80,000																																																																																																																																																																																																																																																																																																																																																																																																					
PB31040	400 mL Cart									PB330										MA330 All Purpose - Medium Set Time; High Strength										PB33050	50 mL Cart		Use when a medium amount of open time is desired.	Black, Cream, White	1:1	15-24	30-45	3,000-3,800	40,000-80,000	PB33040	400 mL Cart		PB530										MA530 All Purpose - Moderate Set Time; High Strength										PB53050	50 mL Cart		Use when moderate amount of open time is desired.	Black, Cream, White	1:1	25-35	60-90	3,000-3,800	40,000-80,000	PB53040	400 mL Cart		PB560										MA560-1 All Purpose - Long Set Time; High Flex										PB56050	50 mL Cart		Use when long amount of open time is desired.	Black, Gray	1:1	55-70	200-260	2,200-2,800	140,000-180,000	PB56040	400 mL Cart		PB590										MA590 All Purpose - Longest Set Time; High Flex										PB59050	50 mL Cart		Use when the longest amount of open time is desired.	Black, Gray	1:1	90-110	260-400	2,200-2,800	140,000-180,000	PB59040	400 mL Cart		PB405										MA205HV All Purpose - Extremely Fast Set Time										PB40550	50 mL Cart		Toughened formula. Fast setting.	Black, Blue, Gray, Cream, White	10:1	2-4	4-8	2,500-3,500	140,000-180,000	PB40549	490 mL Cart		PB320										MA320 All Purpose - Medium Set Time; High Strength										PB32050	50 mL Cart		Toughened formula. Medium cure speed. No preparation needed.	Black, Blue, Gray, Cream, White	10:1	8-15	18-25	2,500-3,500	140,000-180,000	PB32049	490 mL Cart		PB420										AO/MA420 All Purpose - Fast Set Time; High Strength										PB42050	50 mL Cart		Requires virtually no surface preparation. Impact resistant.	Black, Blue, Gray, Cream, White	10:1	4-7	10-15	2,500-3,500	140,000-180,000	PB42049	490 mL Cart		PB422										MA422 All Purpose - Slow Set Time; High Strength										PB42250	50 mL Cart		Use when moderate amount of open time is desired. Toughened formula.	Black, Blue, Gray, Cream, White	10:1	18-24	30-45	2,500-3,500	140,000-180,000	PB42249	490 mL Cart		PB425										MA425 All Purpose - Long Set Time; High Strength										PB42550	50 mL Cart		Use when long amount of open time is desired. Toughened formula.	Black, Blue, Gray, Cream, White	10:1	25-35	60-90	2,500-3,500	140,000-180,000	PB42549	490 mL Cart		PB550										MA550 Marine - U.V. Stable White										PB55050	50 mL Cart		Excellent for marine industry usage.	White	10:1	40-60	80-110	2,000-2,500	140,000-180,000	PB55049	490 mL Cart																																																												
PB330																																																																																																																																																																																																																																																																																																																																																																																																														
MA330 All Purpose - Medium Set Time; High Strength																																																																																																																																																																																																																																																																																																																																																																																																														
PB33050	50 mL Cart		Use when a medium amount of open time is desired.	Black, Cream, White	1:1	15-24	30-45	3,000-3,800	40,000-80,000																																																																																																																																																																																																																																																																																																																																																																																																					
PB33040	400 mL Cart									PB530										MA530 All Purpose - Moderate Set Time; High Strength										PB53050	50 mL Cart		Use when moderate amount of open time is desired.	Black, Cream, White	1:1	25-35	60-90	3,000-3,800	40,000-80,000	PB53040	400 mL Cart		PB560										MA560-1 All Purpose - Long Set Time; High Flex										PB56050	50 mL Cart		Use when long amount of open time is desired.	Black, Gray	1:1	55-70	200-260	2,200-2,800	140,000-180,000	PB56040	400 mL Cart		PB590										MA590 All Purpose - Longest Set Time; High Flex										PB59050	50 mL Cart		Use when the longest amount of open time is desired.	Black, Gray	1:1	90-110	260-400	2,200-2,800	140,000-180,000	PB59040	400 mL Cart		PB405										MA205HV All Purpose - Extremely Fast Set Time										PB40550	50 mL Cart		Toughened formula. Fast setting.	Black, Blue, Gray, Cream, White	10:1	2-4	4-8	2,500-3,500	140,000-180,000	PB40549	490 mL Cart		PB320										MA320 All Purpose - Medium Set Time; High Strength										PB32050	50 mL Cart		Toughened formula. Medium cure speed. No preparation needed.	Black, Blue, Gray, Cream, White	10:1	8-15	18-25	2,500-3,500	140,000-180,000	PB32049	490 mL Cart		PB420										AO/MA420 All Purpose - Fast Set Time; High Strength										PB42050	50 mL Cart		Requires virtually no surface preparation. Impact resistant.	Black, Blue, Gray, Cream, White	10:1	4-7	10-15	2,500-3,500	140,000-180,000	PB42049	490 mL Cart		PB422										MA422 All Purpose - Slow Set Time; High Strength										PB42250	50 mL Cart		Use when moderate amount of open time is desired. Toughened formula.	Black, Blue, Gray, Cream, White	10:1	18-24	30-45	2,500-3,500	140,000-180,000	PB42249	490 mL Cart		PB425										MA425 All Purpose - Long Set Time; High Strength										PB42550	50 mL Cart		Use when long amount of open time is desired. Toughened formula.	Black, Blue, Gray, Cream, White	10:1	25-35	60-90	2,500-3,500	140,000-180,000	PB42549	490 mL Cart		PB550										MA550 Marine - U.V. Stable White										PB55050	50 mL Cart		Excellent for marine industry usage.	White	10:1	40-60	80-110	2,000-2,500	140,000-180,000	PB55049	490 mL Cart																																																																																													
PB530																																																																																																																																																																																																																																																																																																																																																																																																														
MA530 All Purpose - Moderate Set Time; High Strength																																																																																																																																																																																																																																																																																																																																																																																																														
PB53050	50 mL Cart		Use when moderate amount of open time is desired.	Black, Cream, White	1:1	25-35	60-90	3,000-3,800	40,000-80,000																																																																																																																																																																																																																																																																																																																																																																																																					
PB53040	400 mL Cart									PB560										MA560-1 All Purpose - Long Set Time; High Flex										PB56050	50 mL Cart		Use when long amount of open time is desired.	Black, Gray	1:1	55-70	200-260	2,200-2,800	140,000-180,000	PB56040	400 mL Cart		PB590										MA590 All Purpose - Longest Set Time; High Flex										PB59050	50 mL Cart		Use when the longest amount of open time is desired.	Black, Gray	1:1	90-110	260-400	2,200-2,800	140,000-180,000	PB59040	400 mL Cart		PB405										MA205HV All Purpose - Extremely Fast Set Time										PB40550	50 mL Cart		Toughened formula. Fast setting.	Black, Blue, Gray, Cream, White	10:1	2-4	4-8	2,500-3,500	140,000-180,000	PB40549	490 mL Cart		PB320										MA320 All Purpose - Medium Set Time; High Strength										PB32050	50 mL Cart		Toughened formula. Medium cure speed. No preparation needed.	Black, Blue, Gray, Cream, White	10:1	8-15	18-25	2,500-3,500	140,000-180,000	PB32049	490 mL Cart		PB420										AO/MA420 All Purpose - Fast Set Time; High Strength										PB42050	50 mL Cart		Requires virtually no surface preparation. Impact resistant.	Black, Blue, Gray, Cream, White	10:1	4-7	10-15	2,500-3,500	140,000-180,000	PB42049	490 mL Cart		PB422										MA422 All Purpose - Slow Set Time; High Strength										PB42250	50 mL Cart		Use when moderate amount of open time is desired. Toughened formula.	Black, Blue, Gray, Cream, White	10:1	18-24	30-45	2,500-3,500	140,000-180,000	PB42249	490 mL Cart		PB425										MA425 All Purpose - Long Set Time; High Strength										PB42550	50 mL Cart		Use when long amount of open time is desired. Toughened formula.	Black, Blue, Gray, Cream, White	10:1	25-35	60-90	2,500-3,500	140,000-180,000	PB42549	490 mL Cart		PB550										MA550 Marine - U.V. Stable White										PB55050	50 mL Cart		Excellent for marine industry usage.	White	10:1	40-60	80-110	2,000-2,500	140,000-180,000	PB55049	490 mL Cart																																																																																																																														
PB560																																																																																																																																																																																																																																																																																																																																																																																																														
MA560-1 All Purpose - Long Set Time; High Flex																																																																																																																																																																																																																																																																																																																																																																																																														
PB56050	50 mL Cart		Use when long amount of open time is desired.	Black, Gray	1:1	55-70	200-260	2,200-2,800	140,000-180,000																																																																																																																																																																																																																																																																																																																																																																																																					
PB56040	400 mL Cart									PB590										MA590 All Purpose - Longest Set Time; High Flex										PB59050	50 mL Cart		Use when the longest amount of open time is desired.	Black, Gray	1:1	90-110	260-400	2,200-2,800	140,000-180,000	PB59040	400 mL Cart		PB405										MA205HV All Purpose - Extremely Fast Set Time										PB40550	50 mL Cart		Toughened formula. Fast setting.	Black, Blue, Gray, Cream, White	10:1	2-4	4-8	2,500-3,500	140,000-180,000	PB40549	490 mL Cart		PB320										MA320 All Purpose - Medium Set Time; High Strength										PB32050	50 mL Cart		Toughened formula. Medium cure speed. No preparation needed.	Black, Blue, Gray, Cream, White	10:1	8-15	18-25	2,500-3,500	140,000-180,000	PB32049	490 mL Cart		PB420										AO/MA420 All Purpose - Fast Set Time; High Strength										PB42050	50 mL Cart		Requires virtually no surface preparation. Impact resistant.	Black, Blue, Gray, Cream, White	10:1	4-7	10-15	2,500-3,500	140,000-180,000	PB42049	490 mL Cart		PB422										MA422 All Purpose - Slow Set Time; High Strength										PB42250	50 mL Cart		Use when moderate amount of open time is desired. Toughened formula.	Black, Blue, Gray, Cream, White	10:1	18-24	30-45	2,500-3,500	140,000-180,000	PB42249	490 mL Cart		PB425										MA425 All Purpose - Long Set Time; High Strength										PB42550	50 mL Cart		Use when long amount of open time is desired. Toughened formula.	Black, Blue, Gray, Cream, White	10:1	25-35	60-90	2,500-3,500	140,000-180,000	PB42549	490 mL Cart		PB550										MA550 Marine - U.V. Stable White										PB55050	50 mL Cart		Excellent for marine industry usage.	White	10:1	40-60	80-110	2,000-2,500	140,000-180,000	PB55049	490 mL Cart																																																																																																																																																															
PB590																																																																																																																																																																																																																																																																																																																																																																																																														
MA590 All Purpose - Longest Set Time; High Flex																																																																																																																																																																																																																																																																																																																																																																																																														
PB59050	50 mL Cart		Use when the longest amount of open time is desired.	Black, Gray	1:1	90-110	260-400	2,200-2,800	140,000-180,000																																																																																																																																																																																																																																																																																																																																																																																																					
PB59040	400 mL Cart									PB405										MA205HV All Purpose - Extremely Fast Set Time										PB40550	50 mL Cart		Toughened formula. Fast setting.	Black, Blue, Gray, Cream, White	10:1	2-4	4-8	2,500-3,500	140,000-180,000	PB40549	490 mL Cart		PB320										MA320 All Purpose - Medium Set Time; High Strength										PB32050	50 mL Cart		Toughened formula. Medium cure speed. No preparation needed.	Black, Blue, Gray, Cream, White	10:1	8-15	18-25	2,500-3,500	140,000-180,000	PB32049	490 mL Cart		PB420										AO/MA420 All Purpose - Fast Set Time; High Strength										PB42050	50 mL Cart		Requires virtually no surface preparation. Impact resistant.	Black, Blue, Gray, Cream, White	10:1	4-7	10-15	2,500-3,500	140,000-180,000	PB42049	490 mL Cart		PB422										MA422 All Purpose - Slow Set Time; High Strength										PB42250	50 mL Cart		Use when moderate amount of open time is desired. Toughened formula.	Black, Blue, Gray, Cream, White	10:1	18-24	30-45	2,500-3,500	140,000-180,000	PB42249	490 mL Cart		PB425										MA425 All Purpose - Long Set Time; High Strength										PB42550	50 mL Cart		Use when long amount of open time is desired. Toughened formula.	Black, Blue, Gray, Cream, White	10:1	25-35	60-90	2,500-3,500	140,000-180,000	PB42549	490 mL Cart		PB550										MA550 Marine - U.V. Stable White										PB55050	50 mL Cart		Excellent for marine industry usage.	White	10:1	40-60	80-110	2,000-2,500	140,000-180,000	PB55049	490 mL Cart																																																																																																																																																																																																
PB405																																																																																																																																																																																																																																																																																																																																																																																																														
MA205HV All Purpose - Extremely Fast Set Time																																																																																																																																																																																																																																																																																																																																																																																																														
PB40550	50 mL Cart		Toughened formula. Fast setting.	Black, Blue, Gray, Cream, White	10:1	2-4	4-8	2,500-3,500	140,000-180,000																																																																																																																																																																																																																																																																																																																																																																																																					
PB40549	490 mL Cart									PB320										MA320 All Purpose - Medium Set Time; High Strength										PB32050	50 mL Cart		Toughened formula. Medium cure speed. No preparation needed.	Black, Blue, Gray, Cream, White	10:1	8-15	18-25	2,500-3,500	140,000-180,000	PB32049	490 mL Cart		PB420										AO/MA420 All Purpose - Fast Set Time; High Strength										PB42050	50 mL Cart		Requires virtually no surface preparation. Impact resistant.	Black, Blue, Gray, Cream, White	10:1	4-7	10-15	2,500-3,500	140,000-180,000	PB42049	490 mL Cart		PB422										MA422 All Purpose - Slow Set Time; High Strength										PB42250	50 mL Cart		Use when moderate amount of open time is desired. Toughened formula.	Black, Blue, Gray, Cream, White	10:1	18-24	30-45	2,500-3,500	140,000-180,000	PB42249	490 mL Cart		PB425										MA425 All Purpose - Long Set Time; High Strength										PB42550	50 mL Cart		Use when long amount of open time is desired. Toughened formula.	Black, Blue, Gray, Cream, White	10:1	25-35	60-90	2,500-3,500	140,000-180,000	PB42549	490 mL Cart		PB550										MA550 Marine - U.V. Stable White										PB55050	50 mL Cart		Excellent for marine industry usage.	White	10:1	40-60	80-110	2,000-2,500	140,000-180,000	PB55049	490 mL Cart																																																																																																																																																																																																																																	
PB320																																																																																																																																																																																																																																																																																																																																																																																																														
MA320 All Purpose - Medium Set Time; High Strength																																																																																																																																																																																																																																																																																																																																																																																																														
PB32050	50 mL Cart		Toughened formula. Medium cure speed. No preparation needed.	Black, Blue, Gray, Cream, White	10:1	8-15	18-25	2,500-3,500	140,000-180,000																																																																																																																																																																																																																																																																																																																																																																																																					
PB32049	490 mL Cart									PB420										AO/MA420 All Purpose - Fast Set Time; High Strength										PB42050	50 mL Cart		Requires virtually no surface preparation. Impact resistant.	Black, Blue, Gray, Cream, White	10:1	4-7	10-15	2,500-3,500	140,000-180,000	PB42049	490 mL Cart		PB422										MA422 All Purpose - Slow Set Time; High Strength										PB42250	50 mL Cart		Use when moderate amount of open time is desired. Toughened formula.	Black, Blue, Gray, Cream, White	10:1	18-24	30-45	2,500-3,500	140,000-180,000	PB42249	490 mL Cart		PB425										MA425 All Purpose - Long Set Time; High Strength										PB42550	50 mL Cart		Use when long amount of open time is desired. Toughened formula.	Black, Blue, Gray, Cream, White	10:1	25-35	60-90	2,500-3,500	140,000-180,000	PB42549	490 mL Cart		PB550										MA550 Marine - U.V. Stable White										PB55050	50 mL Cart		Excellent for marine industry usage.	White	10:1	40-60	80-110	2,000-2,500	140,000-180,000	PB55049	490 mL Cart																																																																																																																																																																																																																																																																		
PB420																																																																																																																																																																																																																																																																																																																																																																																																														
AO/MA420 All Purpose - Fast Set Time; High Strength																																																																																																																																																																																																																																																																																																																																																																																																														
PB42050	50 mL Cart		Requires virtually no surface preparation. Impact resistant.	Black, Blue, Gray, Cream, White	10:1	4-7	10-15	2,500-3,500	140,000-180,000																																																																																																																																																																																																																																																																																																																																																																																																					
PB42049	490 mL Cart									PB422										MA422 All Purpose - Slow Set Time; High Strength										PB42250	50 mL Cart		Use when moderate amount of open time is desired. Toughened formula.	Black, Blue, Gray, Cream, White	10:1	18-24	30-45	2,500-3,500	140,000-180,000	PB42249	490 mL Cart		PB425										MA425 All Purpose - Long Set Time; High Strength										PB42550	50 mL Cart		Use when long amount of open time is desired. Toughened formula.	Black, Blue, Gray, Cream, White	10:1	25-35	60-90	2,500-3,500	140,000-180,000	PB42549	490 mL Cart		PB550										MA550 Marine - U.V. Stable White										PB55050	50 mL Cart		Excellent for marine industry usage.	White	10:1	40-60	80-110	2,000-2,500	140,000-180,000	PB55049	490 mL Cart																																																																																																																																																																																																																																																																																																			
PB422																																																																																																																																																																																																																																																																																																																																																																																																														
MA422 All Purpose - Slow Set Time; High Strength																																																																																																																																																																																																																																																																																																																																																																																																														
PB42250	50 mL Cart		Use when moderate amount of open time is desired. Toughened formula.	Black, Blue, Gray, Cream, White	10:1	18-24	30-45	2,500-3,500	140,000-180,000																																																																																																																																																																																																																																																																																																																																																																																																					
PB42249	490 mL Cart									PB425										MA425 All Purpose - Long Set Time; High Strength										PB42550	50 mL Cart		Use when long amount of open time is desired. Toughened formula.	Black, Blue, Gray, Cream, White	10:1	25-35	60-90	2,500-3,500	140,000-180,000	PB42549	490 mL Cart		PB550										MA550 Marine - U.V. Stable White										PB55050	50 mL Cart		Excellent for marine industry usage.	White	10:1	40-60	80-110	2,000-2,500	140,000-180,000	PB55049	490 mL Cart																																																																																																																																																																																																																																																																																																																																				
PB425																																																																																																																																																																																																																																																																																																																																																																																																														
MA425 All Purpose - Long Set Time; High Strength																																																																																																																																																																																																																																																																																																																																																																																																														
PB42550	50 mL Cart		Use when long amount of open time is desired. Toughened formula.	Black, Blue, Gray, Cream, White	10:1	25-35	60-90	2,500-3,500	140,000-180,000																																																																																																																																																																																																																																																																																																																																																																																																					
PB42549	490 mL Cart									PB550										MA550 Marine - U.V. Stable White										PB55050	50 mL Cart		Excellent for marine industry usage.	White	10:1	40-60	80-110	2,000-2,500	140,000-180,000	PB55049	490 mL Cart																																																																																																																																																																																																																																																																																																																																																																					
PB550																																																																																																																																																																																																																																																																																																																																																																																																														
MA550 Marine - U.V. Stable White																																																																																																																																																																																																																																																																																																																																																																																																														
PB55050	50 mL Cart		Excellent for marine industry usage.	White	10:1	40-60	80-110	2,000-2,500	140,000-180,000																																																																																																																																																																																																																																																																																																																																																																																																					
PB55049	490 mL Cart																																																																																																																																																																																																																																																																																																																																																																																																													

Custom sizes are available upon request, including 200 mL, 250 mL, 380 mL coaxial, and u-TAH™ universal cartridges, as well as 10 gallon kits, and 40 gallon drum packs. No weighing or manual mixing is needed. Gel and fixture times are measured at 77° F. Colored products and special order products may require a minimum order. See Safety Data Sheet and Technical Data Sheet for more information.

MS POLYMER (modified silane)

Vibra-Tite Part #	Available Sizes	Color	Viscosity	Specific Gravity	Extrusion Rate	Cure Method	Skin-Over Time	Durometer	Service Temp. Range	Elongation Percentage	Shear Strength
804											
80405	5 Gallon Pail	Black, White, or Gray	Paste	1.4 - 1.6	31.4 g/min., 40 psi at 5mm dia.	Moisture	10 - 12 minutes	Shore A 77	-40°F (-40°C) to 200°F (93°C)	> 190 %	362 psi
80455	55 Gallon Drum										
805											
80530	300 mL Cart	Black, White, or Gray	Paste	1.6	1,100 g/min., 40 psi at 5mm dia.	Moisture	15 minutes	Shore A 45-50	-40°F (-40°C) to 200°F (93°C)	> 410 %	246 psi
80505	5 Gallon Pail										
80555	55 Gallon Drum										
816											
81630	300 mL Cart	Black, White, or Gray	Paste	1.3 - 1.7	338 g/min., 40 psi at 5mm dia.	Moisture	8 minutes	Shore A 38	-40°F (-40°C) to 200°F (93°C)	>540%	300 psi
81605	5 Gallon Pail										
81655	55 Gallon Drum										
817											
81730	300 mL Cart	Black, White, or Gray	Paste	1.3 - 1.7	484 g/min., 40 psi at 5mm dia.	Moisture	7 minutes	Shore A 58	-40°F (-40°C) to 200°F (93°C)	>240%	295 psi

ND Industries and Vibra-Tite are registered trademarks of ND Industries, Inc. Plexus is a registered trademark of ITW Plexus.

Vibra-TITE®

STRUCTURAL ACRYLIC ADHESIVES

are a Methacrylate technology, room temperature curing, non-sagging, 2-part, no-mix system comprised of resin and hardener. It forms structural bonds on metal, composite, plastic, wood, ceramic and many other substrates. They are ideal for parts where extended open time is needed.



Vibra-Tite Part #	Available Sizes	LOCTITE® Part#	Product Description	Color	Viscosity (cP) at 20 RPM	Max Gap Fill (in)	Shear Strength (PSI)	Temp Range	Fixture Time	Specific Gravity	Activator
212 NO-MIX STRUCTURAL ACRYLIC											
21250	50 mL Bottle	31231	Fast cure on close fitting parts.	Amber	1000	0.003	>2000	-65°F to 300°F	30 Sec	1.08	611
21200	1 L Bottle	31243									
224 HIGH IMPACT NO-MIX STRUCTURAL ADHESIVE											
22450	50 mL Bottle	32430	Bonds a wide range of substrates	Clear	10000 - 25000	0.040	2500-3600	-65°F to 300°F	5 Min.	1.05	638
225 NO-MIX STRUCTURAL ACRYLIC											
22550	50 mL Bottle	32530	Severe environment applications. Solvent resistant.	Transparent / Dark Brown	20000	0.040	2200	-65°F to 300°F	5 Min.	1.11	611
22500	1 L Bottle	32586									
226 NO-MIX STRUCTURAL ACRYLIC											
22650	50 mL Bottle	32629	Fast fixturing applications.	Transparent / Dark Brown	18000	0.0420	3500	-65°F to 250°F	1 Min.	1.10	611
22600	1 L Bottle	32685									
233 NO-MIX STRUCTURAL ACRYLIC - RUBBER TOUGHENED											
23350	50 mL Bottle	33081	Rough or porous surfaces.	Pale Yellow	67500	0.005	3300	-65°F to 250°F	5 Min.	1.05	600 / 638
23300	1 L Bottle										
240 NO-MIX STRUCTURAL ACRYLIC											
24050	50 mL Bottle	39250	Fast fixturing magnet bonder.	Amber	6500 / 17500 Thixo	0.025	2500	-65°F to 212°F	1 Min.	1.16	600
24000	1 L Bottle	39280									
274 NO-MIX STRUCTURAL ACRYLIC											
27450	50 mL Bottle		RVM Rear view mirror bonder.	Amber	3200	0.01	2300	-65°F to 250°F	1 Min.	1.1	611
27400	1 L Bottle										

HOT MELT URETHANE ADHESIVES

Providing the benefits of hot melts combined with the performance of urethanes, Vibra-Tite hot melts offer high bond strengths for a wide variety of laminating and joining applications.

Vibra-Tite Part #	Available Sizes	Product Description	Color	Viscosity (cP) @20 RPM	Open Time	Full Cure	Application Temperature
807 HOT MELT - LONG OPEN TIME							
80705	5 Gallon Pail	Designed for assembling Recreational Vehicle sidewalls. Very high strength. Good resistance to temperature and moisture aging.	Clear	15,000 cPs ± 1,500 cPs	6 - 8 minutes	8 hours	235°F (113°C) to 275°F (135°C)
80755	55 Gallon Drum						
80744	2 kg. slug w/foil pouch						
808 HOT MELT - PRESSURE SENSITIVE							
80805	5 Gallon Pail	Designed for clear or translucent substrates. Good for book binding applications. High tack. Pressure sensitive. Resists yellowing from U.V. light.	Clear	9,000 cPs ± 500 cPs	60 seconds	4 hours	235°F (113°C) to 275°F (135°C)
80855	55 Gallon Drum						
80844	2 kg. slug w/foil pouch						
809 HOT MELT - MULTI-PURPOSE							
80905	5 Gallon Pail	Designed for bonding composite panels, including Recreational Vehicle sidewalls. Very high strength.	White	9,000 cPs ± 1,000 cPs	3 - 4 minutes	8 hours	235°F (113°C) to 275°F (135°C)
80955	55 Gallon Drum						
80944	2 kg. slug w/foil pouch						
810 HOT MELT - SHORT OPEN TIME							
81005	5 Gallon Pail	Designed for flexible bonds involving plastic components. Fast set time for immediate bond strength.	Blue	5,000 cPs ± 1,000 cPs	60 to 90 seconds	8 hours	235°F (113°C) to 275°F (135°C)
81055	55 Gallon Drum						
81044	2 kg. slug w/foil pouch						
811 HOT MELT - BOOK BINDING							
81105	5 Gallon Pail	Designed for book binding applications. Excellent adhesion to U.V. cured coatings, films, and clay-coated papers.	Clear	5,000 cPs ± 500 cPs	20 seconds	8 hours	235°F (113°C) to 275°F (135°C)
81155	55 Gallon Drum						
81144	2 kg. slug w/foil pouch						
812 HOT MELT - COATING							
81205	5 Gallon Pail	Designed for decks and panels.	White, Black, Gray	15,000 cPs ± 1,500 cPs	10 seconds	48 hours	235°F (113°C) to 275°F (135°C)
81255	55 Gallon Drum						
81244	2 kg. slug w/foil pouch						
813 HOT MELT - PURGE AND CLEAN							
81305	5 Gallon Pail	Maintenance product. Purges out urethane adhesive and cleans out equipment system.	Blue	1,000 cPs ± 500 cPs	10 seconds	not reactive	235°F (113°C) to 275°F (135°C)
81355	55 Gallon Drum						
81304	1 lb. solid puck						
814 HOT MELT - LAMINATING ADHESIVE							
81405	5 Gallon Pail	Designed for plastic bonding.	Natural, Blue	15,000 cPs ± 1,000 cPs	6 - 8 minutes	24 hours	235°F (113°C) to 275°F (135°C)
81455	55 Gallon Drum						
81444	2 kg. slug w/foil pouch						
815 HOT MELT - LAMINATING ADHESIVE							
81505	5 Gallon Pail	Great resistance to high temperatures.	Natural, Blue	20,000 cPs ± 1,500 cPs	4 - 6 minutes	24 hours	235°F (113°C) to 275°F (135°C)
81555	55 Gallon Drum						
81544	2 kg. slug w/foil pouch						

Vibra-TITE®

URETHANES

Vibra-Tite Urethanes are high strength adhesives for bonding wood, metal, glass, stone, ceramic, brick, fiberglass, carbon, foam and more.

- Ideal for industrial assembly and household repairs
- 100% Waterproof
- Temperature resistant
- Low foam formulations



Vibra-TITE® BONDING PRODUCTS

Vibra-Tite Part #	Available Sizes	Color	Viscosity	Specific Gravity	Mix Ratio	Cure Method	Work Life	Full Cure	Service Temp Range	Durometer	Overlap Shear Strength
801 URETHANE											
80105	5 Gallon Pail	Amber	5,000	1.13	1 Part	Moisture	25 - 30 minutes	24 hours	-20°F (-29°C) to 200°F (93°C)	Shore D 45-55	5 mm CRS, @ 750 psi
80155	55 Gallon Drum										
80175	275 Gallon Tote										
801FC URETHANE - FAST CURE											
80105FC	5 Gallon Pail	Amber	5,000	1.13	1 Part	Moisture	15 - 20 minutes	24 hours	-20°F (-29°C) to 200°F (93°C)	Shore D 45-55	5 mm CRS, @ 750 psi
80155FC	55 Gallon Drum										
80175FC	275 Gallon Tote										
801SS URETHANE - STAINLESS STEEL											
80105SS	5 Gallon Pail	Amber	5,000	1.13	1 Part	Moisture	25 - 30 minutes	24 hours	-20°F (-29°C) to 200°F (93°C)	Shore D 45-55	5 mm CRS, @ 750 psi
80155SS	55 Gallon Drum										
80175SS	275 Gallon Tote										
802 POLYURETHANE											
80205	5 Gallon Pail	Green	2,000	1.13	1:1	2-Component System	3 minutes - 2.5 hours	8-48 hours	-20°F (-29°C) to 200°F (93°C)	Shore D 45-55	5 mm AL. 2014-T3 @ 420 psi
80255	55 Gallon Drum										
80275	275 Gallon Tote										
989 POLYURETHANE											
98902	2 oz Bottle	Amber	7,000	1.1	1 Part	Moisture	25 - 30 minutes	24 hours	-20°F (-29°C) to 200°F (93°C)	Shore D 45-55	5 mm CRS, @ 750 psi
98904	4 oz Bottle										
98908	8 oz Bottle										
98916	16 oz Bottle										
98900	1 L										
989 DAM GOOD GLUE - POLYURETHANE											
98902DGG	2 oz Bottle	Amber	7,000	1.1	1 Part	Moisture	25 - 30 minutes	24 hours	-20°F (-29°C) to 200°F (93°C)	Shore D 45-55	5 mm CRS, @ 750 psi
98902BCDGG	2 oz in Blister Card										
98908DGG	8 oz Bottle										
98916DGG	16 oz Bottle										

Note: 800 series urethanes can be customized to meet specific industrial needs.

www.vibra-tite.com

ND Industries and Vibra-Tite are registered trademarks of ND Industries, Inc.

Vibra-TITE®

PRIMERS, ACTIVATORS & ACCELERATORS

Vibra-Tite surface preparation products promote maximum performance of adhesives and sealants.



Includes Atomizer



New!
Cyanoacrylate
Primer Pen

Vibra-Tite Part #	Available Sizes	LOCTITE® Part#	Product Description	Color	Viscosity (cP)	Base	On-Part Life	Dry Time	Application
600		7380™	EXCEL STRUCTURAL ACTIVATOR						
60028	1 oz Bottle		Structural activator.	Light Brown	43	Monomer	8 Hrs	None	Structurals
60020	2 oz Bottle								
60025	250 cc Bottle								
60000	1 L Bottle	19822							
611		7649™	EXCEL PRIMER N						
61102	2 oz Bottle		General purpose primer.	Clear / Green	2	Acetone	30 Days	30-70 Sec	Anaerobics & Structurals
61108	8 oz Bottle								
61100	1 gal Can	19266							
612		7471™	EXCEL PRIMER T						
61202	2 oz Bottle		Fast acting primer.	Amber	2	Acetone / Isopropanol	7 Days	30-70 Sec	Anaerobics
61208	8 oz Bottle								
61200	1 gal Can	19268							
621		7113™	EXCEL ACCELERATOR						
62102	2 oz Bottle		General purpose accelerator.	Clear	0.4	Heptane	24 Hrs	1 Min.	All Cyanoacrylates
62104	4 oz Bottle								
62108	8 oz Bottle								
62100	1 gal Can	19606							
623			EXCEL ACCELERATOR						
62302	2 oz Bottle		General purpose accelerator.	Clear / Amber	1	Heptane	1 Min	1 Min.	All Cyanoacrylates
62304	4 oz Bottle								
62308	8 oz Bottle								
62300	1 gal Can								
624		712™	EXCEL ACCELERATOR						
62402	2 oz Bottle		Cyanoacrylate Accelerator.	Clear / Amber	1	Isopropanol	1 Min	<30 Sec	All Cyanoacrylates
62404	4 oz Bottle								
62408	8 oz Bottle								
62400	1 gal Can	18390							
625		770™	EXCEL POLYOLEFIN PRIMER						
62502	2 oz Bottle		Cyanoacrylate Primer for polyolefin and other low energy surfaces.	Clear / Amber	1	Heptane	8 Hrs	<30 Sec	All Cyanoacrylates
62504	4 oz Bottle								
62508	8 oz Bottle								
62500	1 gal Can								
626			EXCEL POLYOLEFIN PRIMER						
62610	10 mL Pen		Cyanoacrylate Primer for polyolefin and other low energy surfaces.	Clear / Amber	1	Acetone	8 Hrs	<30 Sec	All Cyanoacrylates
62602	2 oz Bottle								
62604	4 oz Bottle								
62608	8 oz Bottle								
62600	1 gal Can								
638		7387™	EXCEL STRUCTURAL ACTIVATOR						
63802	2 oz Bottle		General structural activator.	Light Brown	1.5	Heptane/Isopropanol	1 Hr	None	Structurals
63804	4 oz Bottle								
63808	8 oz Bottle								
63800	1 L Bottle								

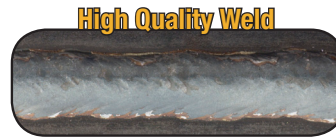
LOCTITE is a registered trademark and 7380, 7649, 7471, 7113, 712, 7701 and 7387 are trademarks of Henkel Corp. USA.



Spatter build-up inside nozzles and tips restricts inert gas flow causing porous welds. In addition, frequent cleaning or disposal of consumables leads to downtime and higher running costs.



Thermal Defender™ coatings provide protection against spatter build-up allowing the inert gas to flow freely; greatly reducing maintenance and increasing productivity.



TWO PRODUCTS - Choose the one that best meets your needs.

USER-APPLIED TD-97

TD-97 is a dry film ceramic coating which is sprayed onto parts to protect them from metal weld spatter. Quick and easy, it can be applied and dried in under a minute and is then ready for immediate use.

TD-97 is a versatile product intended for use in a wide range of welding environments. With a low cost per application, TD-97 can be economically applied to practically any surface which could be damaged by weld spatter.

Item: 97095 | NET WT. 9.5 OZ. (269 g)
Competes with Loctite® SF 7900™



TD-97 KEY BENEFITS:

- Easy application
- Fast drying
- Low cost per use
- Savings on welding consumables
- Higher quality welds
- Reduced downtime
- Easy cleanup
- Reduced need for cleaning chemicals

TD-97 APPLICATIONS:

- MIG and MAG welding
- Laser and Plasma cutting
- Jigs, Fixtures, Nozzles, Tips, Cabling
- Work Pieces & Shrouds
- Cables & Sensors

User-applied TD-97 provides instant weld nozzle and tip protection against spatter. However, if you're looking for a longer lasting, higher performance material for weld nozzles and tips, our pre-applied Spatter-Nix® may be a better alternative.

PRE-APPLIED SPATTER-NIX®

SPATTER-NIX is a nozzle and tip coating designed to be the most durable, and effective solution for weld spatter prevention on the market. Spatter-nix is adhered to parts beforehand and can be stored until necessary for use.

In particular welding environments, Spatter-Nix will greatly out perform sprays or dips. A pre-applied product, Spatter-Nix is bonded to the parts and will repel spatter for longer durations and is much more durable.

SPATTER-NIX KEY BENEFITS:

- Pre-Applied and ready for use
- Reduces nozzle cleaning frequency
- Faster and easier nozzle cleaning
- Increase lifespan of weld nozzles
- Reduces the need for anti-spatter dips and sprays

SPATTER-NIX IS IDEAL FOR:

- Thin metal applications (0.7 - 1.0 mm)
- A Pillars, B Pillars, C Pillars
- Automotive Stamping
- Body Shop Work
- Spot Welding
- Stitch Type Welding

TESTIMONIALS:

- A Major Metal Fabricator reduced nozzle cleaning from every five cycles to every 500 cycles.
- An Automotive OEM cut down their robotic weld nozzle cleaning from three times per shift to once every six shifts.
- A Tier 1 automotive supplier watched its nozzle maintenance go down from every four cycles to once every 184 cycles.
- A Muffler Manufacturer minimized its nozzle cleaning from every 15 minutes to once every six hours.

Vibra-TITE[®] Pro Line



**WORK PACK Contains
All Six Products**
27007



21305BC



13508BC



12508BC



30114BC



47002BC



90729BC

VC-3 Threadmate Non-Traditional Threadlocker

- Adjustable, Removable, Reusable
- Prevents fasteners from loosening due to shock and vibration.
- Locks and seals threaded fasteners of virtually any size.
- Works with metal, wood, plastic, and more.
- Temp Range: -65°F to +165°F



NET 0.17 FL OZ (5 mL)

Threadlocker Gel Permanent Strength (Red)

- Permanently locks fasteners up to 1" in diameter.
- No drip. No waste.
- Torque Break: 200 in/lbs
- Torque Prevail: 100 in/lbs
- Temp Range: -65°F to 300°F



NET 0.26 FL OZ (8 mL)

Threadlocker Gel Medium Strength (Blue)

- Removable, for 1/4" to 3/4" diameter fasteners.
- No drip. No waste.
- Torque Break: 120 in/lbs
- Torque Prevail: 45 in/lbs
- Temp Range: -65°F to 300°F



NET 0.26 FL OZ (8 mL)

Instant SuperGlue Multi-Purpose

- Quick Fixturing, Fast Setting.
- High Strength.
- Pinpoint Precision Tip.
- Surface Insensitive.
- For Metal, Plastic, Rubber, Ceramic, Cork, Paper, Wood, Leather, Fabrics, Vinyl, & more.
- Sporting, Household, Automotive, Marine, Crafts.



NET 0.5 FL OZ (15 mL)

DriveGrip Anti Cam-Out Fluid

- Assembly aid to help prevent fastener slippage.
- Minimizes drilled-out screws, easy-outs, and retapping.
- Increases grip between fastener head and tool by up to 700%.
- Virtually eliminates tool wear and deforming of fasteners.



NET 0.5 FL OZ (15 mL)

Anti-Seize Compound Nickel-Graphite

- Formulated to reduce excessive wear on threads, gears, chains, cables, sprockets, and rollers.
- Prevents excessive wear, seizing, galling, and cold welding.
- Excellent resistance to harsh chemicals.
- Works in temperatures from -300°F to 2,000°F.



NET 0.26 FL OZ (8 mL)

Dam Good Glue™

- ✎ **VERSATILE**
BONDS WOOD, METAL, GLASS, STONE, CERAMIC, BRICK,
FIBERGLASS, CARBON, FOAM, AND MORE
- ✎ **100 PERCENT WATERPROOF**
- ✎ **TEMPERATURE RESISTANT**
- ✎ **SANDABLE, PAINTABLE, STAINABLE**
- ✎ **LOW FOAM**

**WILDLY
STRONG!**



For Dam Good Glue product specs, see urethane chart on page 21.

FAST LOCK 4

**A MUST-HAVE
THREADLOCKER
KIT FOR EVERY
TOOLBOX!**

Product # 27006



Each FAST LOCK 4 KIT contains:

- 12110 10 mL Medium Strength Removable Threadlocker. For fasteners 1/4" to 3/4" dia.
- 13110 10 mL Permanent Strength Threadlocker. Lock fasteners up to 1" dia.
- 12535 35 mL Medium Strength Gel Threadlocker. No mess, no waste!
- 47002 15 mL Anti Cam-Out Fluid. Easily remove or tighten screws!

Vibra-TITE BENCH PACK 5

**A SELECTION OF POPULAR
FASTENER LOCKING AND
RETAINING PRODUCTS**

Product # 27005



Each BENCH PACK 5 KIT contains:

- 54110 10 mL High Strength Retaining Compound. For slip fit assemblies.
- 15010 10 mL Wicking Grade, Medium Strength Threadlocker. For fastener asm. to 1/2" dia.
- 12110 10 mL Medium Strength Removable Threadlocker. For fasteners 1/4" to 3/4" dia.
- 14010 10 mL High Strength Threadlocker. Lock fasteners up to 1" dia.
- 47002 15 mL Anti Cam-Out Fluid. Easily remove or tighten screws!

www.vibra-tite.com

ND Industries and Vibra-Tite are registered trademarks of ND Industries, Inc.

Vibra-TITE™ SPECIALTY PRODUCTS

36 PIECE VALUE KIT - THREAD LOCKERS - SEALANT

New! From

Vibra-TITE®



ORDER KIT # 80637



THIS 36 PIECE VALUE KIT CONTAINS SIX OF OUR BEST-SELLING PRODUCTS, PLUS A STURDY PRODUCT DISPLAY TRAY.

Vibra-Tite Product #	12110	13110	12150	13150	14050	46050
Product Description	10 mL Medium Strength Threadlocker	10 mL Permanent Strength Threadlocker	50 mL Medium Strength Threadlocker	50 mL Permanent Strength Threadlocker	50 mL High Strength Threadlocker	50 mL High Temp Stainless Steel Sealant
Quantity	6 pieces	6 pieces	6 pieces	6 pieces	6 pieces	6 pieces

This product is manufactured by the Vibra-TITE Adhesives and Sealants Division of ND Industries, Inc., U.S.A. Vibra-Tite is a registered trademark of ND Industries, Inc., U.S.A.

Vibra-TITE®

MICROBOND™

First adhesive washer of its kind!
Super light weight and dry to the touch!

Microbond Dri-Adhesive Washers are made from a fibrous material which holds ND Industries' powerful Microspheres adhesive technology.

Microspheres, a material formed through a process known as microencapsulation, consists of tiny spheres or microcaps containing either an activator or adhesive. Although mixed together, the shell of each sphere keeps both parts separated allowing the material to stay dry and inactive until during assembly the force of engagement breaks open the microcaps causing activation.

- **Dry to the touch and safe to handle**
- **Works great on sheet metal applications**
- **Provides vibration dampening**
- **Prevents loosening due to vibration**
- **Prevents galvanic corrosion**
- **Great alternative to split-ring, serrated and conical washers**
- **Adhesive activates upon installation**
- **Will not scratch surfaces**
- **Significantly reduces weight in assemblies**
- **Custom shapes, sizes and colors available**



Dry to the touch and safe to handle



Metal Roofing and Industrial Construction



Exterior Body Panels



Lawn & Tractor Equipment



Heavy Machinery



Vibra-TITE[®] PROVIDES A VARIETY OF SERVICES

Chemical Toll Blending

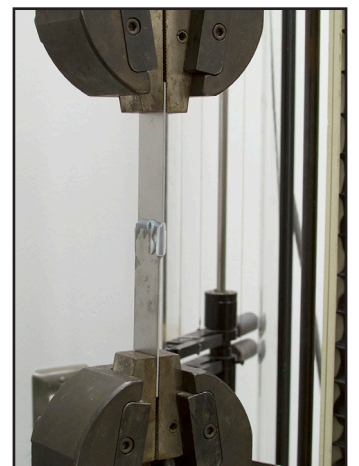
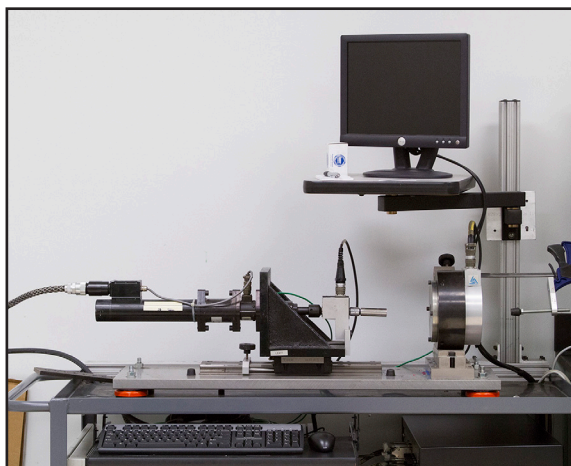
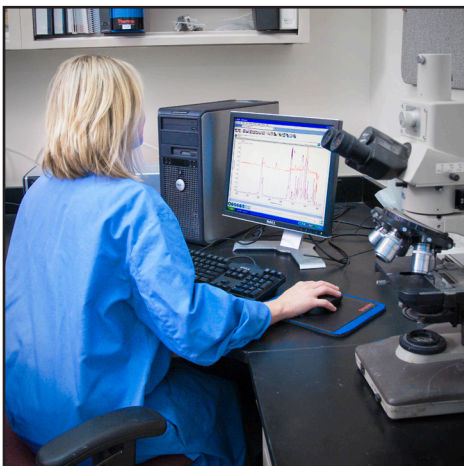


ND Industries, parent company of Vibra-Tite, annually manufactures over one million pounds of a wide variety of adhesives, anaerobics, epoxies, ultraviolets, acrylics, and more. ND Industries offers chemical toll blending services to our customers. Provide us with your formula and we'll blend, package, and prepare your product for shipment.



Laboratory Testing

ND Industries has a certified facility that can be utilized to perform testing and analysis on your products. ND Technologies Group holds testing accreditation through the American Association for Laboratory Accreditation (A2LA) in accordance with ISO/IEC standard 17025. This accreditation demonstrates ND's technical competence in performing a variety of tests on threaded fasteners, adhesives, sealants, coatings, and mastics for the automotive, aerospace, and electronic industries.



TO MEET YOUR CUSTOMIZED NEEDS

Bottling and Packaging Services



ND Industries manufactures many adhesives and sealants for private label use and can fill, label, and package bottled products to your specifications. ND Industries can also supply bulk materials. We provide private labeling services including label design and production with minimum quantity requirements substantially lower than our competitors.



Custom Formulations

ND's Development Lab can create custom adhesive and sealant formulations based on your requirements. Depending on testing requirements, material can be subjected to any number of experiments. In the Analytical Lab, ND will conduct evaluations as your product advances through development to the prototype stage. Whether using differential scanning calorimetry to determine the glass transition temperature of a polymer, Fourier transform infrared spectroscopy to examine material composition, or a cone and plate viscometer to identify threadlocker viscosity rates, ND's chemists will thoroughly evaluate the properties of your customized material.





PreApplied

ND's service centers can Pre-Apply ND products on ND-supplied or customer supplied fasteners. The service centers are tooled with state-of-the-art fastener processing equipment to provide quality products and rapid distribution.

ONE OF THE INDUSTRY'S BROADEST PRODUCT LINES

ND offers a wide range of fastening and assembly related products and processes that exhibit one or more of the following characteristics:

- | | | |
|-------------|----------------|-----------------------------------|
| Locking | Re-Useability | Noise and Vibration Reduction |
| Sealing | Cushioning | Minimization of Galling/Stripping |
| Bonding | Insulating | Masking |
| Lubricating | Identification | Temporary Retention |

In order to assist customers in understanding ND's current product line, the products have been categorized by their function: Inert Locking, Reactive Locking, Advanced Sealing, Masking and Lubricating, and Assemble EZ. In addition to the products listed here, ND offers customized formulations for your unique fastening and assembly needs.

CUSTOMERS SERVED

With its growing family of fastening and assembly products and services, ND meets or exceeds many of the rigorous standards established by the automotive, aerospace, and defense industries.

Customers:

- CHRYSLER
- GENERAL MOTORS
- FORD MOTOR COMPANY
- BOEING
- LOCKHEED MARTIN
- JOHN DEERE
- MACK TRUCK
- CUMMINS ENGINE
- VOLKSWAGEN
- GENERAL ELECTRIC

Accreditations:

- QS 9000 Registered
- ISO 9002 Registered
- ISO/IEC17025 Registered
- AS 9100 Registered
- QPL-18240 Listed
- QSLM Registered

Member: Industrial Fasteners Institute

INERT LOCKING



ND STRIP®, ND PELL-IT®, SURE TEMP, ND PELL-IT® SOFT TOUCH TIP

ND inserts are offered in Nylon, KEL-F® or VESPEL® which ND Industries automatically inserts into a fastener, making it self-locking and self-sealing, yet fully adjustable.



ND PATCH® & ND PATCH® 360° RING

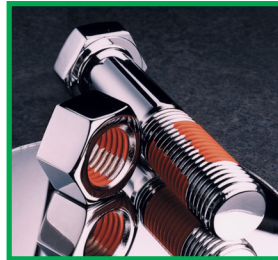
ND patch products make threaded fasteners self-locking and self-sealing, while leaving them fully adjustable. Compare to Tuf-Lok®



Vibra-Tite® VC-3®

Vibra-Tite VC-3 is not an anaerobic or an adhesive. It is a unique blend of acrylic resins that make any threaded fastener self-locking and self-sealing, while remaining service removable.

REACTIVE LOCKING



EPOXY-LOCK®

Epoxy-Lock is a powerful locking / sealing, adhesive which is pre-applied to either male or female threaded fasteners. Though the adhesive surface is dry to the touch, the forces of engagement initiate a chemical reaction.



ND MICROSPHERES®

ND Microspheres are offered in acrylic and epoxy formulations, available in pre-applied or bulk for application by other fastener coater / converters. Compare to 3M™ Scotch-grip™, LOCTITE® Dri-Loc®, & omniTECHNIK Precoat®.



EXPAND-A-LOCK™

Expand-A-Lock is an original 2-in-1 application and the most effective way to simultaneously lock and bond fasteners and seal against all air and fluid leakage.

ADVANCED SEALING



ST-3®

ST-3 is designed to be applied by ND or on the customer's automated band coating equipment or tumble coater. Compare to 3M™ Scotch-Grip™ 4291, and LOCTITE® Vibra-Seal® 516, 517, 503, and 503H.



ND PLASTISOL

ND Plastisol provides a positive seal that eliminates leaks. It is available in a wide variety of durometers and colors.



ND PLASTISOL OPENMOLD

ND Plastisol Open-Mold are parts made of moldable PVC materials that can seal, trim, cushion, insulate and control noise and vibration... often at a fraction of the cost of die cutting and injection molding.



ND MASTICS & EXPANDABLES

Crushable mastics evenly fill and seal all voids and are applied by the assembler. Heat causes the material in Expandables to expand and adhere to metal, creating a seal while filling in the gaps.



SEALTEK™ 1120

A medium viscosity, cure in place gasket. This system forms a resilient, soft and flexible gasket that can conform to almost any dimensional surface. Cures rapidly with heat or UV radiation.

MASKING & LUBRICATING



ANTI-SEIZE 917 COMPOUND

ND's 917 Anti-Seize compound is a high temperature lubricant formulated with Nickel to prevent seizing, galling, pitting and excessive wear and corrosion. Ideal where different metals come in contact. It will not wash or squeeze out.



ND LM-1293®

An automotive approved process, ND LM-1293 is a Teflon®-type fastener coating that lubricates and prevents undesirable substances from adhering to fastener threads. Compare to Nycote®.



EZ Drive 300™

An ergonomic assembly aid designed to increase installation efficiency by reducing friction by as much as 75%

ASSEMBLE EZ



STAY-PUT®

Stay-Put provides temporary, yet dependable retention for fasteners or other components prior to and during the assembly process.

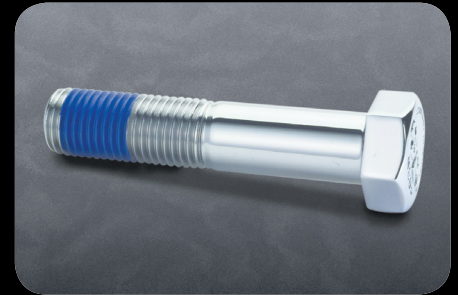


ND COLOR CODE

Whether your need is to identify some special characteristics or to color match a fastener head to a mating surface, ND is your source for color identification.

ND Pre-Applied Comparison Chart

ND INDUSTRIES PROCESS	COMPETES WITH
Anti-Seize 917	LOCTITE® Pre-applied Anti-Seize, Nylok® Ny Plate®
Epoxy-Lock	3M™ Fastener Adhesive, Loctite® Dri-Loc®, Precote® 80
ND LM-1293	Nylok® Nycote®
ND Microspheres 293 / 593SA	ThreeBond 2446
ND Microspheres 593 Red	ThreeBond 2481
ND Microspheres 593S	3M™ Fastener Adhesive 2353 & 4844, ThreeBond 2430
ND Microspheres 593SB	ThreeBond 2440 & 2440B
ND Microspheres 1193S	3M™ Fastener Adhesive 2451 & 2510, ThreeBond 2440
ND Microspheres TA300	Precote® 30, ThreeBond 2471 & 2415
ND Microspheres TA800	Precote® 80
ND Microspheres TA850	Precote® 85, ThreeBond 2403 & 2411
ND Microspheres AA0695	Loctite® Dri-Loc® 200
ND Microspheres AA0696	Loctite® Dri-Loc® 200
ND Microspheres AA0795	Loctite® Dri-Loc® 201
ND Microspheres AA0796	Loctite® Dri-Loc® 201
ND Microspheres AA0895	Loctite® Dri-Loc® 202
ND Microspheres AA0896	Loctite® Dri-Loc® 202, ThreeBond 2457
ND Microspheres AA0995	Loctite® Dri-Loc® 203
ND Microspheres AA0996	Loctite® Dri-Loc® 203
ND Microspheres AA1095	Loctite® Dri-Loc® 204
ND Microspheres AA1096	Loctite® Dri-Loc® 204, ThreeBond 2475
ND Microspheres AA1195	Loctite® Dri-Loc® STS
ND Microspheres AA1196	Loctite® Dri-Loc® STS
ND Microspheres AA1295	Loctite® Dri-Loc® 211
ND Microspheres AA1296	Loctite® Dri-Loc® 211
ND Microspheres AA1395	Loctite® Dri-Loc® 218
ND Microspheres AA1396	Loctite® Dri-Loc® 218
ND Patch	Nylok® Blue Patch
ND Patch Hi-Temp	Nylok® Ny Temp®
ND Pell-It	Nylok® Blue® Pellet
ND Strip	Nylok® Torq-Strip®
NDEM223	L&L Products L1041
NDM97	L&L Products L1030, Forest City FC-XE-16, Chemseco 3002
ND Plastisol	Nylok® Ny Plas®
Sealtek 1120	Nylok® Ny Seal®, Anochrome Group® Rimlex®
ND ST-3-W	3M™ Thread Sealant 4291
ND ST-3-L3	3M™ Thread Sealant 4291
ND ST-3-L4	Precote® 5
ND ST-3-L5	Loctite® Vibra-Seal® 503
ND ST-3-L5A	Loctite® Vibra-Seal® 503HV
ND ST-3-L6	Loctite® Vibra-Seal® 516
ND ST-3-L7	Loctite® Vibra-Seal® 517
ND ST-3-L8	Loctite® Vibra-Seal® 503 mod
ND ST-3-L8A	Loctite® Vibra-Seal® 503 HVmod
ND ST-3-L10	Loctite® Vibra-Seal® 517 mod
ND ST-3-L11	Loctite® Dri-Seal® 506
ND ST-3-L13	Loctite® Dri-Seal® 513
Stay-Put	Nylok® Ny Stay®



ND, ND Industries, Epoxy-Lock, ND LM-1293, ND Microspheres and ST-3 are registered trademarks of ND Industries, Inc. 3M and Scotch-Grip are trademarks of Minnesota Mining and Manufacturing Company. LOCTITE, Dri-Loc, Dri-Seal and Vibra-Seal are registered trademarks of Henkel Corp. USA. Precote is a registered trademark of Omnitechnik Mikroverkselungsges.mbh. Nycote, Ny Temp, Ny Plate, Torq-Strip, Ny Plas, Ny Seal and Ny Stay are registered trademarks of Nylok

Vibra-TITE®



To Place An Order:

Vibra-Tite Customer Service
Phone: 1-800-521-2663
Fax: 386-860-4521
Email: sales@vibra-tite.com

Visit our website at www.vibra-tite.com



ND Industries, Inc.
Corporate Office
1000 North Crooks Road
Clawson, Michigan 48017 USA

Phone: 248-288-0000
Fax: 248-288-0022
www.ndindustries.com

ND Pre-Applied Processing Centers

Oakland, New Jersey	Northbrook, Illinois	Kaohsiung, Taiwan
Charlotte, North Carolina	Rockford, Illinois	Kunshan City, China
Clawson, Michigan	Arlington, Texas	Istanbul, Turkey
Twinsburg, Ohio	Santa Fe Springs, California	